

**Annual Report**

April 2017 –

March 2018



Dorset LEP at a glance .....	4
Meet our board .....	6
Our work, achievements and impact .....	9
Local delivery .....	10
Infrastructure investment .....	13
Transport .....	14
Housing .....	18
Digital .....	19
Innovation .....	20
Skills and enterprise .....	21
Supporting business .....	22
Dorset's Enterprise Zone opens for business .....	24
Regional collaboration .....	25
Supporting rural enterprise .....	26
Engaging with political influencers .....	27
Outlook and opportunity .....	28
Financial report .....	30
Dorset LEP team .....	31

## Foreword



Jim Stewart, Chair and  
Lorna Carver, Director,  
Dorset Local  
Enterprise Partnership



It has been an exciting and successful year for Dorset Local Enterprise Partnership. We are proud to present our annual report which showcases our work, reflects on some of our milestones and considers priorities for the future.

A key focus has been on our continued delivery of infrastructure and growth projects across Dorset. We have seen major transport improvements around Bournemouth Airport and the Port of Poole, a commitment to the roll out of ultrafast broadband, new facilities at Bridport Literary and Scientific Institute and Lyme Regis Museum and the start of plans for an innovation studio at Arts University Bournemouth. Our hard work and enviable track record in Local Growth Fund project delivery has been recognised by Government as 'exceptional'.

Boosting businesses and jobs is a cornerstone of our work. Our Growing Places Fund has provided businesses and development projects with essential loan-funding; the launch of our Invest in Dorset Ambassadors scheme is promoting Dorset's business offer locally, nationally and overseas.

We have been tackling our county's connectivity issues through investment in new roads and are continually campaigning for better transport infrastructure.

In January the region received a major economic boost when we opened Dorset's Enterprise Zone - Dorset Innovation Park - for business. It is Dorset's second largest employment site and provides a new cluster of excellence in advanced engineering and a focus for the regeneration of South Dorset.

Working collaboratively with partners across the whole of southern England has been a significant priority and extension of our work this year. Partnerships with the Great South West, Innovation South and South West Rural Productivity Commission are making our collective voice and influence stronger.

We are playing a pivotal role highlighting and supporting multi-million-pound funding opportunities for Dorset through the Government's Housing Infrastructure Fund and the Planning Delivery Fund.

Enhancing our governance arrangements has been a key priority, reinforcing our commitment to working to the highest standards of transparency and accountability.

Dorset is now at an exciting stage of economic and political development and change. We led on Dorset's response to the Department for Business, Energy and Industrial Strategy's 'Building our Industrial Strategy' green paper, which sets out Government's vision to improve living standards and economic growth by increasing productivity across the UK. We used our valued relationship with the private and public sectors to spell out the opportunities for our economy to help drive and support the Government's ambition for a more productive and evenly balanced economy.

Our response focused on the relevance to Dorset of four elements of the Industrial Strategy: developing skills; investing in science research and innovation; upgrading infrastructure and cultivating world-leading sectors.

We have collectively achieved great things for Dorset; our work is strengthening our economic environment and helping businesses to thrive - creating more jobs, housing and highly-skilled workers.

But there is still much to do. We need to understand and tackle the challenges our economy faces, embrace the opportunities and plan for the future.

With two unitary authorities set to bring major efficiencies to the county, we have a rare opportunity to rebrand Dorset as a home for ambitious and innovative business. A new city by the sea - Bournemouth, Poole and Christchurch - is being created that is the same size as Bristol. We have stunning countryside, an outstanding coastline and several protected natural sites. Our economic potential is huge and must be leveraged.

Never has it been more important for businesses, political leaders and organisations to work collaboratively to achieve a higher level of Government funding, improve infrastructure and productivity and generate greater opportunities for Dorset. Together we are a force to be reckoned with.

Our 2018/2019 activity plan to achieve this is set out on page 28.

Thank you to all our members, partners and staff for their tremendous talent, commitment and hard work for Dorset Local Enterprise Partnership. We are looking forward to working together over the coming year to achieve even bigger and better things for Dorset.

**Jim Stewart**  
Chair

**Lorna Carver**  
Director

## Dorset LEP at a glance

Dorset Local Enterprise Partnership (LEP) is a dynamic partnership between businesses, local authorities and the education sector.

With a population of close to 800,000, Dorset's economy is worth £16.76 billion GVA and home to over 52,000 businesses.

### Major achievements to date £247.7 million total funding secured for Dorset

1,792  
new jobs

882  
new homes

888  
new apprenticeships

#### Local Growth Fund

£132.75m  
(secured £98.5m)

21 projects  
underway  
15 complete

£41.86m  
infrastructure funding  
invested to March 2018

#### Growing Places Fund

£9.7m  
secured for revolving  
loan scheme

Funding awarded to  
9 capital projects  
with significant economic impact

£10.4m  
leveraged

£11.4m  
reinvested

#### Skills

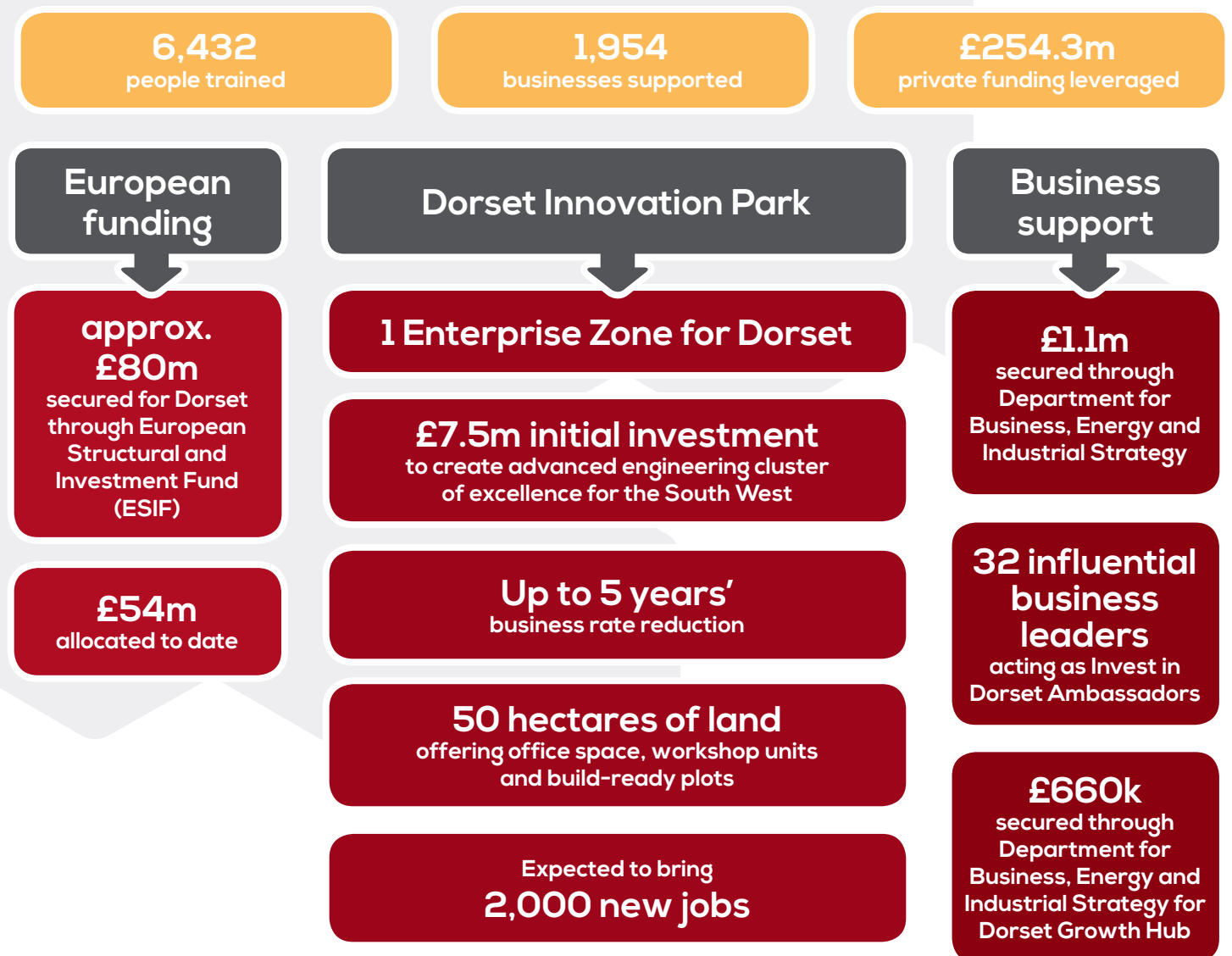
£9,119  
secured through  
Apprenticeships Fund

£450k  
to deliver Dorset Enterprise  
Adviser Network (Careers and  
Enterprise Company plus local  
partners)

47 secondary schools, special  
schools, learning centres, colleges

31 business volunteers

Our top priorities are to secure funding for the region and to support and deliver projects that have long-term economic benefits across Dorset to increase productivity and prosperity for all. Equally important is our role setting out the county's economic vision, developing local industrial strategies and driving growth.



## Meet our board

Our influential and hardworking board members bring a wealth of experience and leadership to Dorset LEP. With representation from a diverse range of business sectors, places, local authorities and the education sector, they set strategic priorities and oversee all decisions and activities for Dorset LEP.

In line with our robust corporate governance arrangements, our board members and employees have signed up to a Code of Conduct, which includes the Nolan Principles of Public Life.

We are committed to working to the highest possible standards of transparency and accountability. Board members' conflict of interests together with board papers and minutes are published on our website.

Our special thanks go to Gordon Page CBE who after six successful years as Chairman of Dorset LEP retired in November 2017. Thank you also to former board member Andrea Smith for her role in leading and championing our work on housing.

### Dorset LEP board members



**Jim Stewart**  
Chief Executive, Poole Harbour Commissioners  
Chair, Dorset LEP



**Jim Andrews**  
Chief Operating Officer, Bournemouth University  
Dorset LEP's representative: Higher Education



**Councillor John Beesley**  
Leader, Bournemouth Borough Council



**Nigel Evans**  
Principal, Weymouth College  
Dorset LEP's representative: Further Education



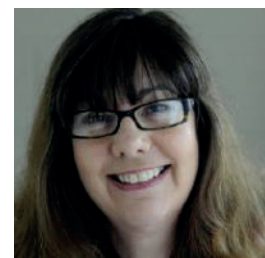
**Ian Girling**  
Chief Executive, Dorset Chamber of Commerce & Industry  
Dorset LEP's representative: Business Forum



**Emma Hunt**  
Deputy Vice-Chancellor, Arts University Bournemouth



**Councillor Rebecca Knox**  
Leader, Dorset County Council



**Alison Moore**  
Counsellor and business mentor; former contract director for BT  
Dorset LEP's representative: Small Business; Dorset Gateway

---

'The Dorset LEP Board is committed to ensuring we have the right conditions in place for businesses to grow and succeed, and to making our strengths, needs and potential known. It is an exciting time for Dorset as we aim to deliver ambitious plans to support the national Industrial Strategy and boost our productivity and I am proud to be drawing on my own experience in business to help guide this vital work.'

Sara Uzzell  
Dorset LEP board member



**Luke Rake**  
Principal and Chief Executive, Kingston Maurward College  
Dorset LEP's representative:  
Rural Enterprise



**Kim Slowe**  
Pioneer for customer build housing and founder of Zero C Holdings



**Richard Smith**  
Director, The Tank Museum  
Dorset LEP's representative:  
Tourism



**John Sutcliffe**  
Director of Business Development, Atlas Elektronik UK  
Dorset LEP's representative:  
Enterprise Zone; Inward Investment Steering Group



**Councillor Gary Suttle**  
Leader, Purbeck District Council



**Sara Uzzell**  
Director, Sandbuzz. Former hotel owner and hospitality & tour operator  
Dorset LEP's representative:  
Growing Places Fund Steering Group



**Councillor Janet Walton**  
Leader of the Council, Borough of Poole



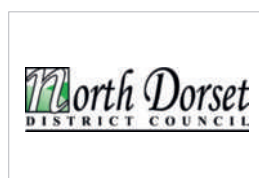
**Andrew Wickham**  
Managing Director, Go South Coast

# Partnerships

## Regional partnerships

### Strategic input to a range of programmes:

- South West ADEPT
- Great South West
- Innovation South
- South Coast Financial Centre of Excellence
- South West Aerospace
- South West Agri-Tech
- Nuclear South West
- South West Rural Productivity Commission
- UK South Coast Marine Cluster
- Wessex Academic Health Science Network
- West of England Line Strategy Group
- iAero
- South West Energy Hub



### Effective collaboration with local partners including:

- Arts University Bournemouth
- Big Lottery Fund
- Borough of Poole
- Bournemouth Borough Council
- Bournemouth & Poole College
- Bournemouth University
- Careers & Enterprise Company
- Christchurch & East Dorset Councils
- Chamber of Commerce & Industry
- Dorset Councils Partnership
- Dorset County Council
- Dorset EMC
- FSB
- Future Dorset
- Innovate UK
- IoD
- Kingston Maurward College
- North Dorset District Council
- ORIBU
- Purbeck District Council
- Weymouth College

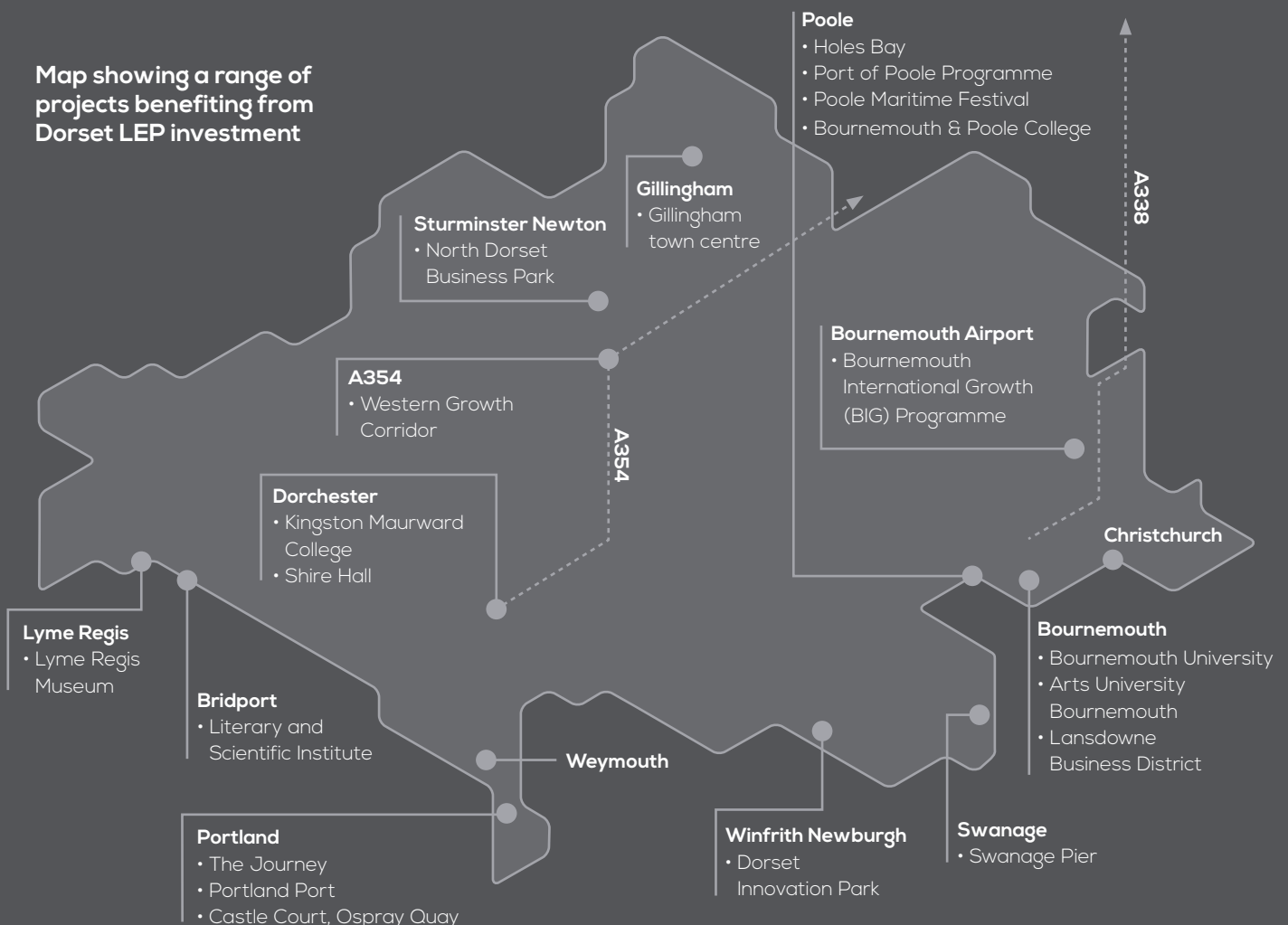


# Our work, achievements and impact

The scope of our work is broad; we would like to share with you some of our key projects and priorities and the impact they are having across Dorset. They include:

- Local delivery
- Infrastructure investment (transport, housing and digital)
- Innovation
- Skills and enterprise
- Enterprise Zone
- Business support
- Regional working
- Rural enterprise support

Map showing a range of projects benefiting from Dorset LEP investment



# Local delivery

**£132m**  
Local Growth  
Fund programme

**36**  
projects and  
programmes

**21 projects**  
**pending**  
15 projects completed

**£41.86m**  
infrastructure fund  
invested  
to March 2018

## Local Growth Fund

We have been busy delivering year 3 of a **£135 million** programme of growth projects that we secured funding for through the Government's Local Growth Fund. They bring together local, national and private sector funding to:

- unlock and unblock key housing and employment sites
- create more highly skilled jobs
- support economic growth

A total of 36 projects and programmes across Dorset have received growth deal funding, ranging from major transport improvements, university facilities and new housing to business sites and tourist attractions.

Two projects that have benefitted this year:

### Bridport Literary and Scientific Institute

Investment in Bridport's Literary and Scientific Institute helped convert it into a contemporary and innovative workspace. The beautifully restored Grade II listed building is now a centre for enterprise and a focus for future growth in West Dorset.

### Lyme Regis Museum extension

Funding towards the new Mary Anning Wing extension at Lyme Regis Museum is helping it make a greater contribution to the local economy and generate further jobs and skills.



Bridport Literary and Scientific Institute



New Mary Anning Wing, Lyme Regis Museum

## Dorset LEP Growing Places Fund

**£9.7m**

from Government is supporting housing and job creation in Dorset. The Growing Places Fund is a repayable loan designed to unlock capital projects which have significant economic impact and create new jobs and homes. Loans have been awarded to:

The Factory, Alder Hills



Castle Court, Ospray Quay



Hamworthy Bridge, Poole



Bionanovate, Poole



Cobham Gate Development



North Dorset Business Park



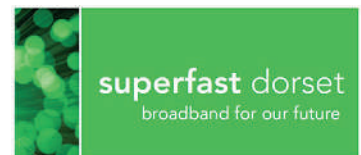
Boscombe Regeneration



Field International, Poole



Ultrafast Broadband



## Local delivery (continued)

### European Structural and Investment Funds (ESIF)

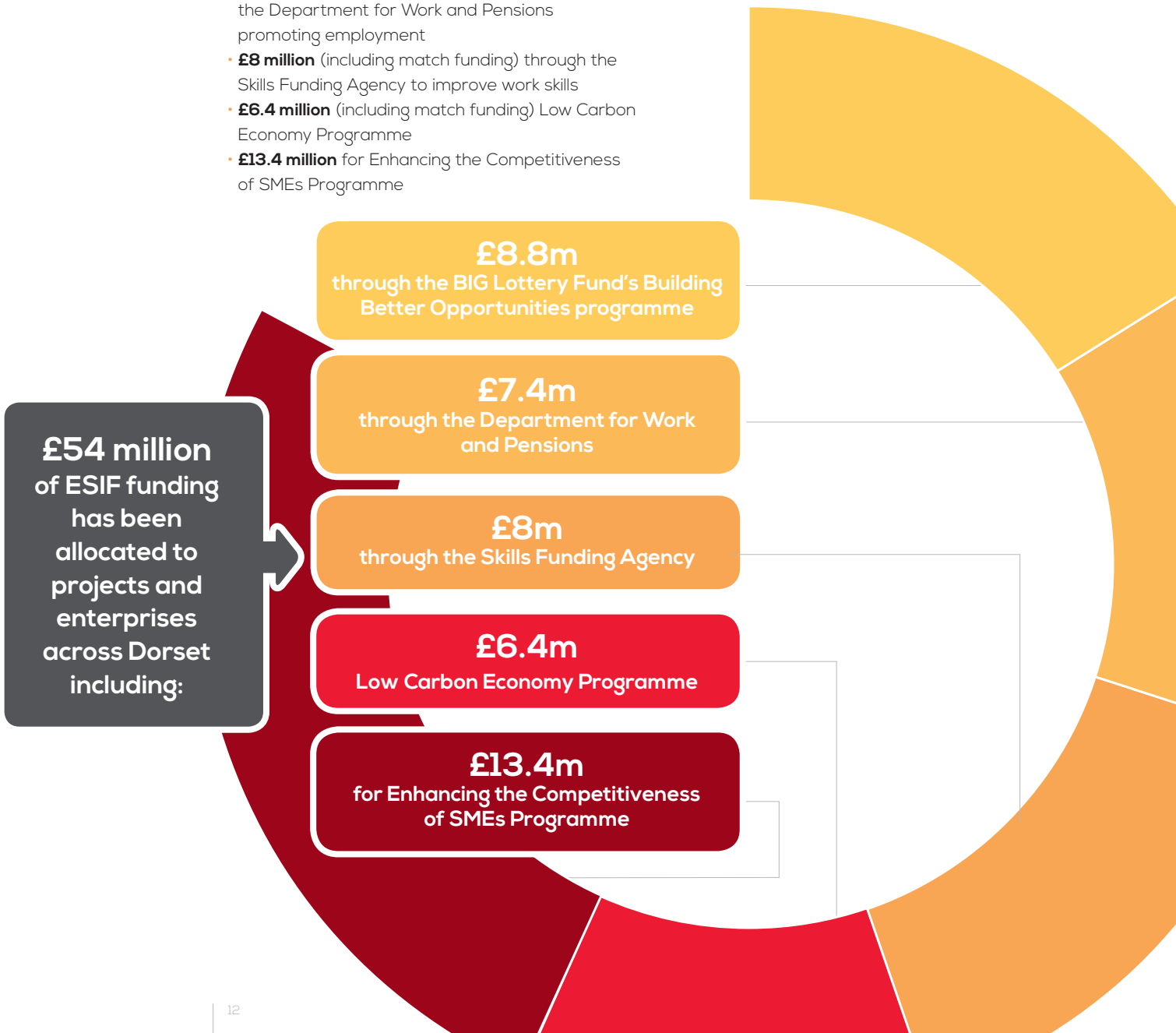
An approximately £80 million programme for Dorset was secured through ESIF, the main funding programme supporting growth and jobs across the EU.

In the UK, ESIF are made up of the:

- European Regional Development Fund (ERDF)
- European Social Fund (ESF)
- European Agricultural Fund for Rural Development (EAFRD)

£54 million of ESIF funding has been allocated to projects and enterprises across Dorset including:

- **£8.8 million** (including match funding) through the BIG Lottery Fund's Building Better Opportunities programme supporting young people
- **£7.4 million** (including match funding) through the Department for Work and Pensions promoting employment
- **£8 million** (including match funding) through the Skills Funding Agency to improve work skills
- **£6.4 million** (including match funding) Low Carbon Economy Programme
- **£13.4 million** for Enhancing the Competitiveness of SMEs Programme



**£54 million** of ESIF funding has been allocated to projects and enterprises across Dorset including:

**£8.8m**

through the BIG Lottery Fund's Building Better Opportunities programme

**£7.4m**

through the Department for Work and Pensions

**£8m**

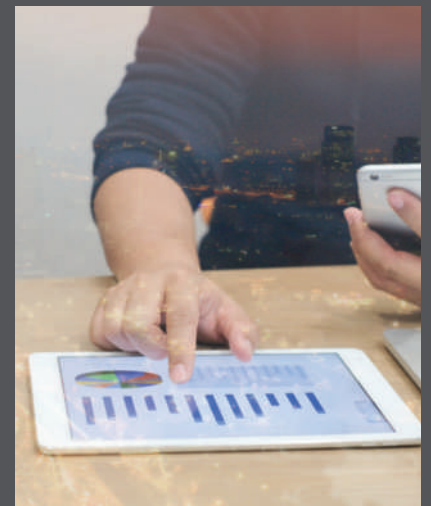
through the Skills Funding Agency

**£6.4m**

Low Carbon Economy Programme

**£13.4m**

for Enhancing the Competitiveness of SMEs Programme



# Infrastructure investment

Transport, housing and digital

Dorset's infrastructure is hindering economic development; poor transport links were cited as the county's biggest barrier to growth by delegates at our business conference earlier this year.

Ongoing investment and change to the county's infrastructure is paramount for businesses to thrive. We play a crucial role securing political support and funding for major infrastructure improvements across the county to improve:

- **transport**
- **housing**
- **digital connectivity**

# Transport

We secured **£73.3 million** of Local Growth Funding for a number of transport infrastructure projects including:

## Dorset LEP Bournemouth International Growth (BIG) Programme

This major economic growth plan is improving connectivity, easing congestion, unlocking employment land, protecting existing jobs and creating new opportunities in and around Bournemouth Airport and Wessex Fields.

£59 million programme, £45.2 million from the Local Growth Fund and matched from local partners, is funding a series of much needed transport and infrastructure investments along the A338 and B3073 corridors.


July 2017 marked the start of the second phase of infrastructure improvements at:

- **Chapel Gate roundabout** (completed March 2018)
- **Blackwater Junction East** on the B3073 (completed July 2018)
- **Hurn roundabout** (completion due Autumn 2018)

The next phase of works, starting September 2018, will see improvements at:

- **Blackwater Junction West** on the B3073
- **Blackwater** – A338 widening, auxiliary lane and slip roads

A planning application for a new link road and junction from the A338 to Wessex Fields has been submitted. If approved, construction is expected to start in Spring 2019.



**Boosting the economy by improving roads, easing congestion and protecting & creating jobs around Bournemouth Airport and Wessex Fields. £59.4 million secured (£45.2m Local Growth Fund plus £14.2m private/public sector match funding).**

**2015 - 2021**

**TRANSPORT IMPROVEMENTS**

1. A338 reconstruction – completed May 2016
2. Chapel Gate roundabout – completed March 2018
- 3a Blackwater – B3073 east junction – completion due May 2018
- 3b Blackwater – B3073 west junction – provisional start/completion: autumn 2018/June 2019
- 3c Blackwater – A338 auxiliary lane and slip roads – provisional start/completion: autumn 2018/June 2019
4. Hurn roundabout – design options due April 2018; provisional start/completion: June 2018/September 2018
5. Parley Cross east – planning application for eastern link road submitted Dec 2017; start/completion dates tbc
6. Parley Cross west – design options for new western link road under consideration – planning application due 2018; start/completion dates tbc
7. Parley Cross junction – design work underway; start/completion dates tbc
8. Wessex Fields – planning application submitted Dec 2017; decision expected summer 2018; provisional start/completion dates for phase 1 – spring 2019/spring 2021
9. A348 corridor – modelling work at Longham mini-roundabouts, Bear Cross and Mountbatten junction underway; start/completion dates tbc
10. A338 widening – preliminary design work underway; start/completion dates tbc
11. Cycle links
12. Bus enhancements

**SITE IMPROVEMENT**

- Surrounding airport area and Aviation Business Park.
- Wessex Fields – new link road serving employment area, plus providing a second access route to hospital.

**WORKSPACE PROVISION**

- Aviation Business Park – 60 ha of business and manufacturing land.
- Wessex Fields – 6 ha of business and office employment land.


*Together both areas provide potential for the creation of 10,000 jobs locally.*


**HOUSING**

- West Parley, residential development east of New Road - 386 homes by 2026; planning application submitted Dec 2017.

**SKILLS ESCALATOR**

- Improving skills, employee development and talent supply.





**CURRENT: APRIL 2018**

The map shows the A338 and B3073 corridors with 12 numbered project locations. Key areas include Parley Cross Residential Development, Aviation Business Park Workspace Development, and Wessex Fields Workspace Development. Major roads shown include A31, A348, A347, A341, A3060, B3073, and A338 Wessex Way. Other landmarks include Bournemouth Airport and RBCH Hospital.

## Dorset LEP BIG Programme benefits:

**£45.2m**  
Local Growth Fund investment

**£14.2m**  
private/public sector match funding

**10,000**  
new jobs

**£500m**  
GVA

**66 ha**  
employment land

**386**  
new homes

## Major restoration to Poole Bridge

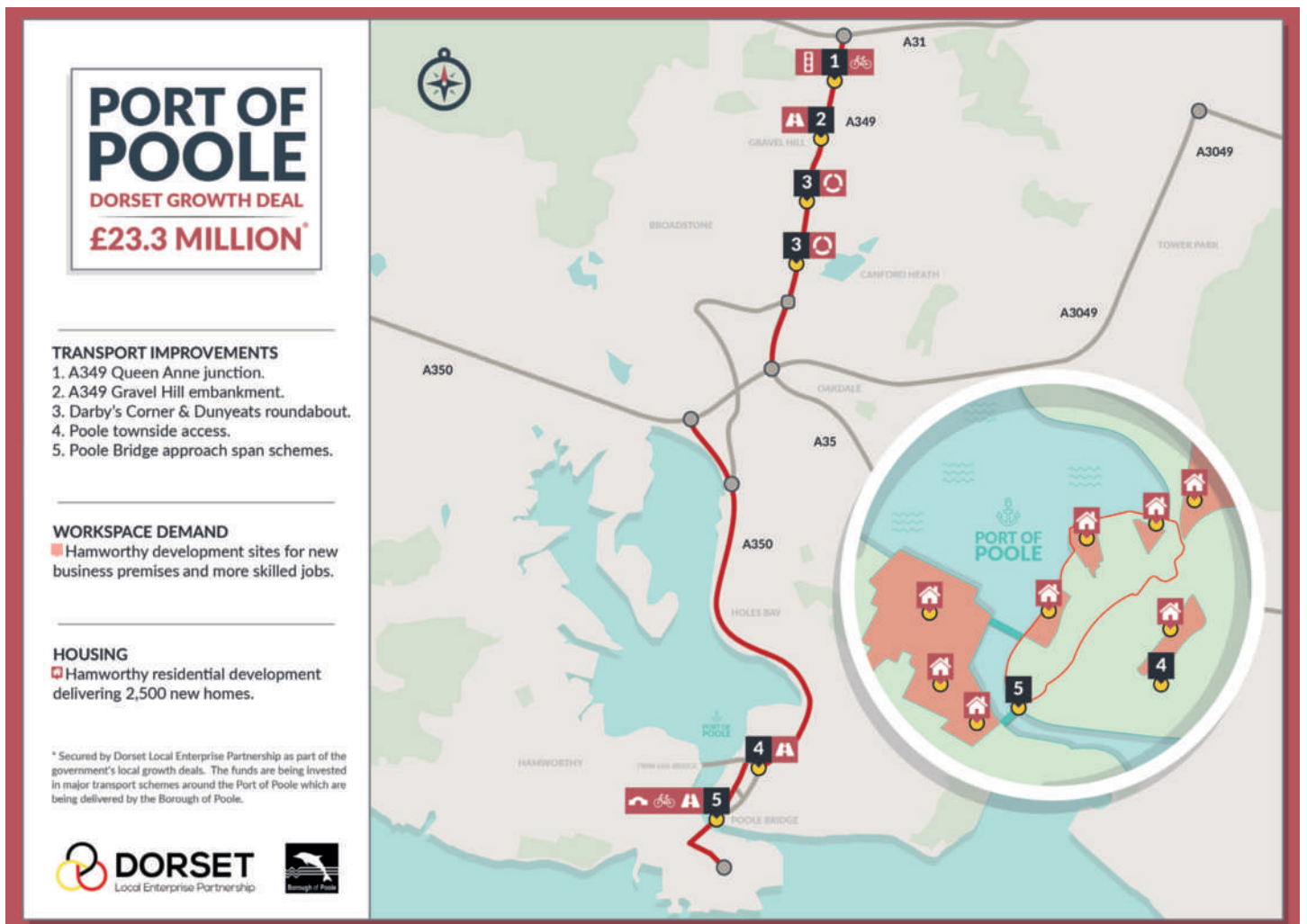
The Port of Poole is one of our county's key economic assets. £23.3 million Local Growth Funding, plus £2.6 million local match funding, has improved access between Poole and Hamworthy, benefitting the Port of Poole and other major employers such as Sunseeker. Infrastructure works were completed in January 2018.



Left to right Gordon Page (former Chair, Dorset LEP), Lorna Carver (Director, Dorset LEP), Julian McLaughlin (Head of Transportation, Borough of Poole) and Cllr Drew Mellor, Borough of Poole



HM Government



## Port of Poole benefits

**£25.9m**  
investment

**£500m**  
leveraged  
private  
investment

**120-year**  
new lease  
of life for  
Poole Bridge

**2,500**  
new houses

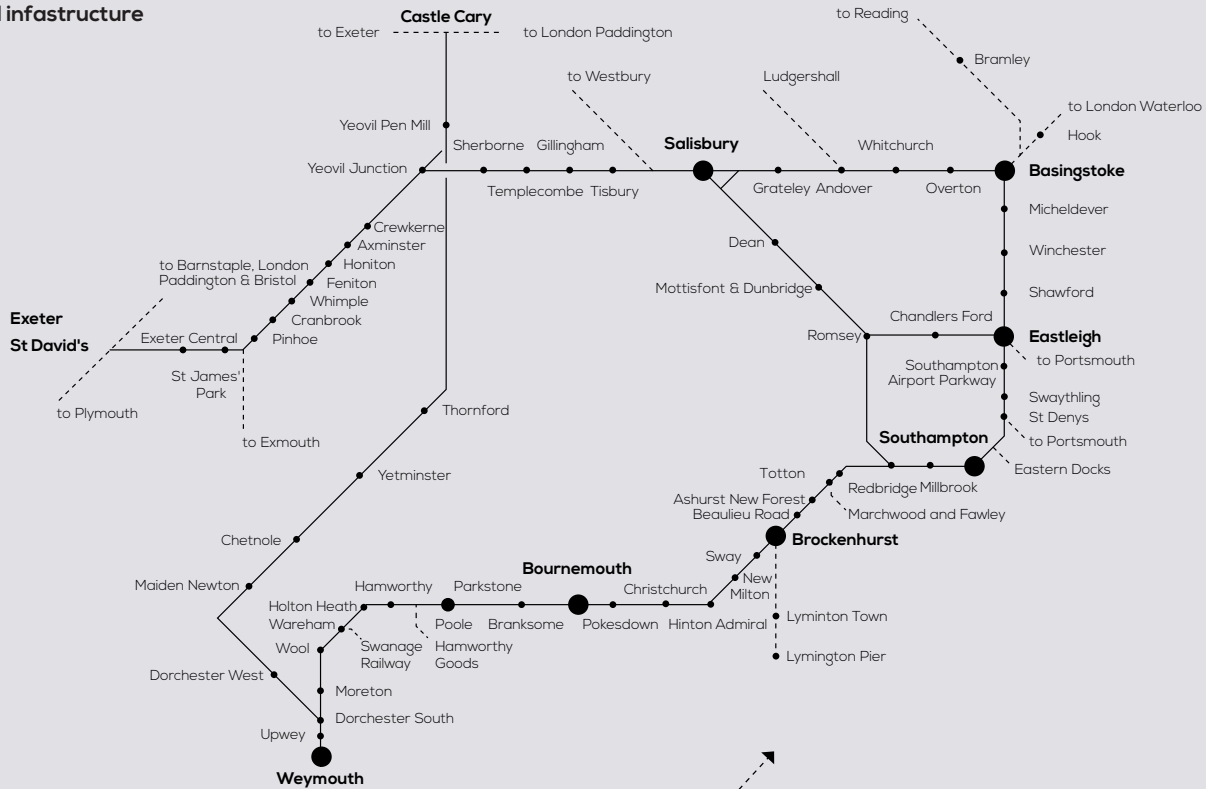
**Industrial,  
maritime,  
residential and  
visitor growth  
secured**

# Transport (continued)

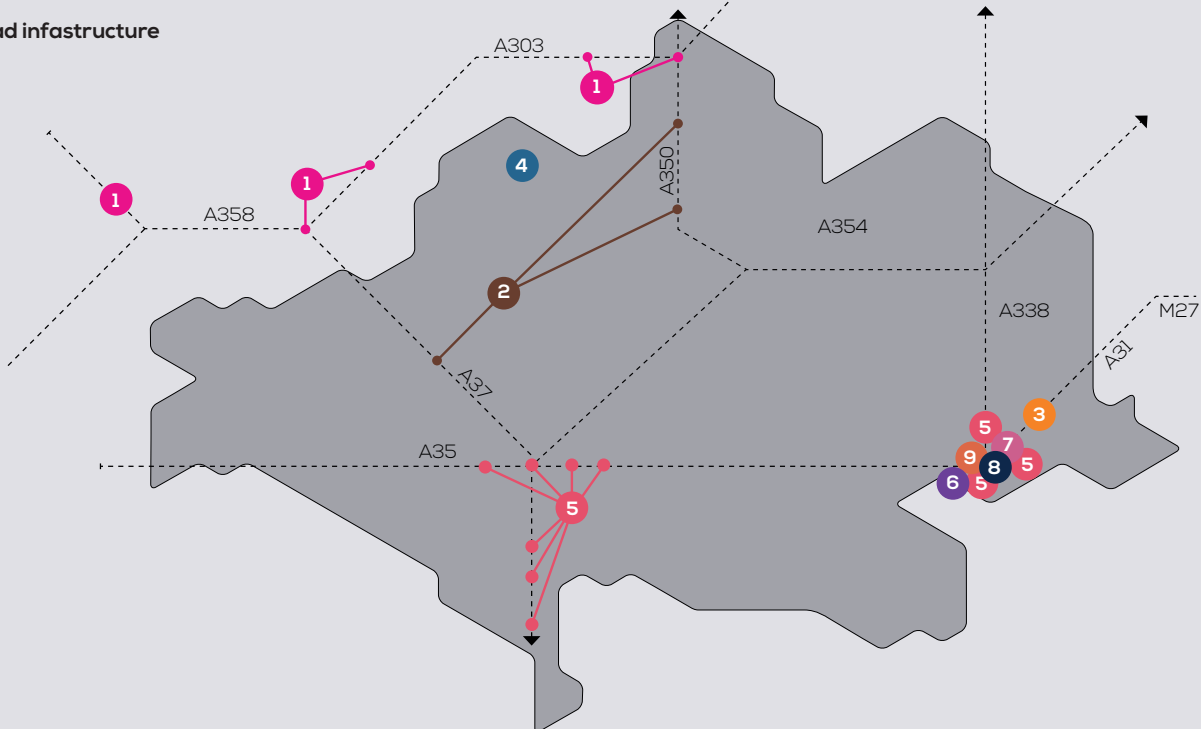
## Rail and road infrastructure priorities

We helped to produce two critical transport maps highlighting the priorities for road and rail investment for Dorset. They are being used to highlight Dorset's transport needs to both local and national political influencers.

### Rail infrastructure



### Road infrastructure



- 1 Connectivity to the South West
- 2 North / South Connectivity to M4 & M5
- 3 London / Midlands Connectivity
- 4 North Dorset Town Improvements
- 5 Congestion / Journey Time
- 6 Port of Poole
- 7 The Big Programme, Bournemouth Airport
- 8 North Bournemouth Quality Bus Corridor
- 9 Wallisdown Road & Ringwood Road Connectivity Project



## Improving North-South connectivity

We are collaborating with local authorities and other local enterprise partnerships across Bath, North East Somerset, Dorset and Wiltshire to present the case for inclusion of the South of England within the Government's Road Investment Strategy, the southern aspect of which aims to reduce congestion on the A350 and improve the safety of the A36 and A46.



Jim Stewart, Chair of Dorset LEP (third from right) with John Glenn MP for Salisbury (third from left) and delegates from Wiltshire, BaNES & Dorset councils discussing road investment plans for the South

## South Western Railway's new train timetable

South Western Railway, Dorset's new train service operator, opened a public consultation on proposed changes to the December 2018 timetable. It suggested reducing journey times to London by downgrading services from medium and smaller sized stations including Upwey, Hamworthy, Parkstone, Branksome, Pokesdown, and Christchurch. We submitted a joint response with Bournemouth, Poole and Dorset councils which:

- welcomed journey time reductions from some stations
- expressed this should not come at the cost of a downgraded service from medium and smaller sized stations
- proposed an alternative timetable to provide greater benefits for all Dorset train users

The revised timetable reflecting our comments has since been reworked; feedback from Network Rail on the revised proposals is expected in summer 2018.

'The inclusion of the South in the Government's Road Investment Strategy, and its proposal for better north-south connectivity between the M4 and Poole, is a great idea.'

Dr Andrew Murrison,  
MP for South West Wiltshire



# Housing

Housing and economic growth are intrinsically linked. Providing a sustainable, affordable and diverse housing market in Dorset is challenging, but imperative to our prosperity. Our major housing report 'Supporting Dorset's Economic Growth – Future Housing Provision' (February 2017) highlighted opportunities for addressing key growth barriers in housing affordability and availability.

We are committed to implementing an integrated response to Dorset's housing requirements that reflects our region's economic conditions.

## £16.6 million housing boost for Dorset

The Government's Housing Infrastructure Fund pledge of £16.6 million for Dorset to unlock additional housing was good news. We worked closely with local authorities to secure the funds and would like to acknowledge their hard work and commitment delivering new housing for Dorset. Funds have been awarded for projects in:



L-R: Andrew Flockhart and Cllr Janet Walton of Poole Borough Council, Nick Walkley of Homes England, former Dorset LEP board member Andrea Smith

## Homes England and consultation

At the start of the year we attended the visit of Nick Walkley, Chief Executive for Homes England, to Poole Borough Council. The visit by the national housing and regeneration agency gave us the opportunity to highlight the joint strategic working and innovative approach to housing delivery underway across the county as well as the growth deal projects being delivered in Poole.

## Our housing commitment

The appointment of Dorset LEP's dedicated Housing Policy Manager at the end of 2017 means we can work even more closely with partners to support housing growth across the region. We:

- work with local authorities and partners to develop a strategic approach to the delivery of new housing and attract housing funding and investment to Dorset
- support the house building and construction sector to deliver the housing growth required in Dorset
- promote the importance of housing development to support economic growth and improve productivity
- promote and enable greater links between the public and private sector to facilitate an acceleration in house building

Our housing sub-group works closely with local authorities as they develop strategic plans for housing growth.

## Opening Doors

We supported the innovative 'Opening Doors' programme, an ambitious programme of activity tackling the housing crisis in North Dorset, West Dorset and Weymouth & Portland run by Dorset Councils Partnership.



### Ultrafast broadband roll-out

The economy and businesses received a major boost last year with a multi-million-pound investment in broadband services.

**3,800**  
premises  
to benefit  
from fibre  
broadband

Most will access full fibre 'ultrafast' connections (1Gbps)

**Priority  
areas**

Dorset Innovation Park Enterprise Zone, Aviation Business Park and Western Dorset Growth Strategy area

**Around 95%**  
of premises in Dorset can already  
access superfast fibre broadband

**Engineering work to be  
completed in 2019**



Lansdowne

### Ambitious plans for 5G

We are supporting exciting plans to put Dorset at the forefront of 5G wireless communications technology. Led by Bournemouth Council, the work builds on the world-leading 5G mapping work carried out by Ordnance Survey and aims to establish one of the world's first 5G networks within the Lansdowne area of Bournemouth. The vision is to create a world-leading 5G environment that allows companies to gain first-mover advantage in worldwide markets.



# Innovation

Innovation is a key priority in the Government's Industrial Strategy. It's all about creating new and more efficient processes, products and ideas. We are backing several initiatives in Dorset aimed at encouraging innovation which in turn will increase business success, productivity and economic growth.



## New Innovation Studio - Arts University Bournemouth

Plans for a new innovation studio at Arts University Bournemouth have been given the green light and will deliver significant benefits to the region, increasing employability between the University and local business.

The new state-of-the-art studio, part-funded by Dorset LEP secured £1.4 million local growth funding, will:

- support small businesses in the digital and creative industries
- act as a base for business start-ups
- support research and innovation
- offer access to leading creative experts

## Southern England driving UK's digital economy

Dorset is one of the UK's top areas for world-leading science and innovation – and the Government's Science and Innovation Audit (SIA) agrees. We co-ordinated Dorset's evidence for the SIA in a report that revealed the South of England is the backbone of the UK's digital economy with:

- £225.3 billion and
- 13.7% of the UK's economic output

We were also a founding partner for Innovation South consortium.



## New MoU brings innovation boost for Dorset

Further evidence of innovation in action was seen when we joined Cornwall and Isles of Scilly LEP and Heart of the South West LEP to sign Innovate UK's first LEP Memorandum of Understanding to help boost innovation and productivity across the South West business community. Innovate UK:

- drives productivity and growth
- supports businesses to:
  - realise the potential of new technologies
  - develop ideas and make them a commercial success
- has committed over £1.8 billion to innovation, matched by a similar amount in partner and business funding.

# Innovate UK



Department for  
Business, Energy  
& Industrial Strategy

'[The South of England] is at the forefront of advances in digital innovations across a wide range of industrial sectors that can transform and improve our daily lives.'

Department for Business, Energy and Industrial Strategy

# Skills and enterprise

Our vision for Dorset is to have a high-skilled workforce meeting the needs of Dorset's growing economy and priority sectors. We want our working age population to become better skilled and more productive so that our future economic growth is driven by greater worker productivity rather than relying on growth in the workforce.

We are addressing the issue of Dorset's skills shortage through several initiatives:



Dorset LEP former Chair Gordon Page with charter recipients

## Dorset LEP's Employability Charter

Raising the aspirations, employability and entrepreneurial capability of Dorset's young people plays an important role in preparing them for the workforce.

Our Employability Charter scheme encourages education providers and employers to equip young people with the necessary skills, attitudes, experience and motivation they will need when they start working. We were delighted to award thirteen schools and employers from across the county with new 'charter' status at a special ceremony at Bournemouth University.

## Apprenticeships in action

Apprenticeships are a valuable part of our economy. They produce a motivated, skilled and qualified workforce and help improve business productivity, competition and employee retention.

We secured funding from the Skills Funding Agency to develop and deliver a programme of apprenticeship engagement activities including events, research and marketing aimed at Dorset's employers.

We also partnered with the Dorset Chamber of Commerce and Industry and the Skills Funding Agency to produce two videos showcasing how three Dorset businesses - Savills, Superior Seals and Digital Storm - benefitted from apprenticeships.

## Dorset Enterprise Adviser Network Sign-ups

47

secondary schools, special schools, learning centres and colleges

31

business volunteers



Dorset Enterprise Adviser Network team with local student

## Dorset LEP's Enterprise Adviser Network

Launched in October 2017 the Dorset Enterprise Adviser Network:

- creates powerful, lasting connections between businesses and their local schools and colleges
- equips people with employability skills
- facilitates informed career choices

Delivered in partnership with the national Careers and Enterprise Company our aim is to improve the employability prospects of young people across Dorset.

**£450k programme**  
with Careers and Enterprise Partnership

**78 members**  
of Dorset Enterprise Adviser Network

**£9,119**  
secured through Apprenticeships Fund

# Supporting business

Close engagement with  
Dorset Business Alliance  
representing  
**5,000+ businesses**

**31 influential  
business leaders**  
acting as Invest in Dorset  
Ambassadors

**1,954**  
business  
supported  
to date

Business support is high on our agenda – it is a key driver to business success, growth and development. We are involved in a wide range of regional and local initiatives.

## Business awards

We supported a number of awards including the Dorset Business Awards, Blackmore Vale Business Awards and Dorset Tourism Awards to recognise business excellence in our region.



*'Thank you to our Invest in Dorset Ambassadors for their invaluable work supporting our vision to make positive changes across our county.'*

Jim Stewart, Chair, Dorset LEP

*'Dorset is a vibrant place and we are committed to investing in our people, infrastructure and technology. Our future is bright, and I am delighted to be promoting the region through the Dorset Ambassadors scheme.'*

Philip Radwanski, Business Manager, Caterpillar Marine Power UK

## Invest in Dorset Ambassadors

May 2017 saw the launch of our Invest in Dorset Ambassadors scheme which promotes Dorset as a great place to do business. Over 30 local business people from a range of industry sectors have volunteered to become Dorset Ambassadors to:

- promote Dorset on the national and global stage as a great place to do business
- support our young people to fulfil their ambitions
- lobby Government for infrastructure improvements to ensure Dorset becomes a better-connected place

Business leaders interested in joining the scheme should contact Kathryn Hill at [khill@bournemouth.ac.uk](mailto:khill@bournemouth.ac.uk)



Invest in Dorset Amabassadors



Dorset Business Alliance (l-r): IoD Dorset Chairman Angela Piromalli, DCCI Chief Executive Ian Girling and FSB Development Manager for Dorset Neil Eames

### Dorset Business Alliance

We instigated the set-up of the new Dorset Business Alliance incorporating the Dorset Chamber of Commerce and Industry, the Federation of Small Businesses and the Institute of Directors.

We meet regularly with the Alliance which represents the collective views of 5,000+ businesses.



New business units at Dorset Innovation Park

### Dorset Innovation Park

Dorset Innovation Park is already home to world leaders in marine, defence and advanced engineering.

£600,000 Local Growth Funding, along with £2.2 million from local match, helped to construct 20 new employment units on the site which are being let to businesses on 'easy in, easy out' terms.

*'Dorset Innovation Park is an excellent example of private and public-sector partnership working together to unlock vital employment land and deliver much-needed economic growth to the region.'*

Richard Drax, MP for South Dorset

# Dorset's Enterprise Zone opens for business



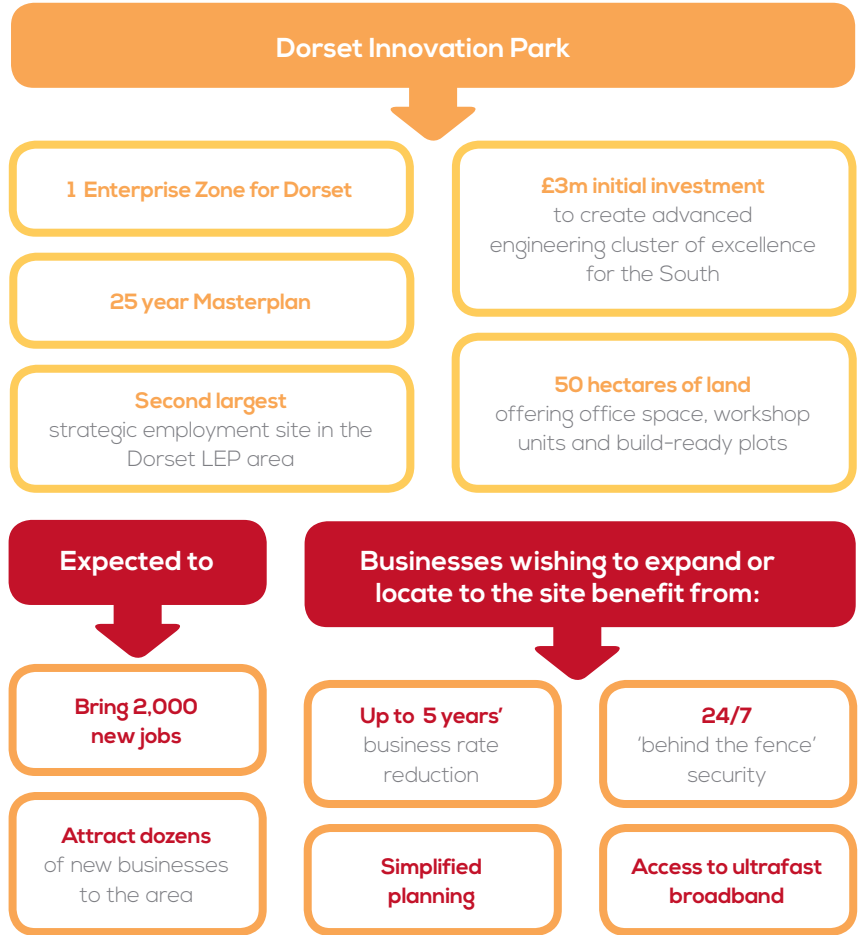
Official opening of Dorset Innovation Park l-r: Cllr Cherry Brooks, Marcus Drysdale, Richard Drax MP, Jim Stewart, Cllr Deborah Croney

## Dorset Innovation Park

The county's new and only Enterprise Zone, Dorset Innovation Park, officially opened for business in January 2018.

Dorset Innovation Park is an advanced engineering cluster of excellence for the South, building on strengths in marine, defence and energy. It is a major focus for the economic regeneration of South Dorset and a vital stimulus for employment.

The overall vision, 25-year Masterplan, and initial £3 million five-year investment programme for the site was developed through a close working partnership between Dorset LEP, Dorset County Council and Purbeck District Council.



Aerial view of Dorset Innovation Park



# Regional collaboration



Our focus is not just local – our outreach is also regional, national and global in nature. We work closely with partners to ensure the county’s strengths are represented as part of regional campaigns to attract Government and international investment into the South West of England and the South of England.

## Backing the Great South West

We are leading the Great South West – a group of south west local authorities, LEPs, businesses and education institutes, to enable a common strategy for increased productivity and prosperity across the whole of the south west. The #backthesouthwest campaign, set to ignite future growth and opportunities in the South West was launched last year and endorsed by over 300 delegates.

## Innovation South

We were one of the founding partners of Innovation South which:

- comprises 100 organisations including businesses, industry and partners from across the private and public sectors
- acts as a single, coherent voice representing the views of business, education and local authorities to:
  - Government
  - potential national and international investors

Its vision for the South of England is to create a powerhouse of world-class strengths in digital technologies that aims to transform the world and the way we live.

## Three LEP Energy Strategy

Along with Cornwall and Isles of Scilly and Heart of the South West LEPs, we secured funding through the Department for Business, Energy and Industrial Strategy to write an energy strategy for the south. It will outline the aspirations, potential for business development and demonstrator projects, and is expected to be published in autumn 2018.



Great South West – DLEP board member Sara Uzzell (third from right) at SW Growth Summit

‘Innovation South is demonstrating the whole really can be greater than the sum of its parts... By better articulating the opportunities for investment in the south, more funds can be channelled to where it will make a difference...’

Innovation South, March 2018



# Supporting rural enterprise



Rural jobs in specific localities make a significant economic contribution to Dorset; we are committed to strengthening the growth and resilience of our rural communities including better broadband provision. Our Rural Enterprise Group is represented by a range of rural organisations in Dorset including the private sector, education, Government agencies, the Dorset Local Nature Partnership, the Local Action Groups and local authorities.



The Game Changing Technologies for Agriculture in Dorset conference

**'Digital connectivity is one of the most important ways of improving productivity in rural areas. The South West Rural Productivity Commission's view is that improving digital connectivity has the potential to be a 'game changer', but if left unresolved will result in left behind communities.'**

Dorset LEP board member Luke Rake, Principal of Kingston Maurward College and a panel member of the South West Rural Productivity Commission

## Stimulating rural productivity

We are leading the way in addressing the barriers to rural productivity as part of our work with the South West Rural Productivity Commission.

In partnership with other southern LEPs our work:

- explores how the economy in rural areas of the South West is performing
- identifies opportunities to stimulate growth in rural areas

Results of a report (October 2017) by the Commission highlighted:

- a hardworking and entrepreneurial culture
- the potential for the region to become a hothouse of enterprise, given the right support
- the potential for economic growth in digital connectivity, smart technologies and agri-tech-food-tourism
- the need for urgent action to avoid businesses and communities being left behind

The report received a positive response from national and regional stakeholders and was mentioned in the Government's Industrial Strategy as a good example of collaboration to address shared challenges.

Since then, we have been working with other south west LEPs to agree the next steps in implementing the report's recommendations.

Following the report we hosted a conference in association with Dorset County Council and Kingston Maurward College to develop the work of the Commission and to identify a way forward with Government to ensure that opportunities and challenges were prioritised and resourced.

## Game changing technologies for Dorset agri-tech

Agri-tech is a key sector for Dorset – it is undergoing an exciting transformation with new technologies to expand food production.

We hosted 'The Game Changing Technologies for Agriculture in Dorset' conference in collaboration with Dorset County Council and Kingston Maurward College. Its focus was the transfer of leapfrog technologies into agriculture and how to meet and respond to market demand.

## Engaging with political influencers

We work hard to promote Dorset on the political map, but also to ensure we receive the funding required to grow our economy, improve infrastructure and generate greater opportunities for the area.

A key part of this work is responding to Government reviews and strategy, evidenced this year through:

- our response to the Government's Industrial Strategy green paper
- feeding into the national housing review led by Sir Oliver Letwin, MP for West Dorset

We have strong relationships with Dorset MPs and regularly brief them on critical issues and priorities, gauge their views and garner their support and advice.



'I have enjoyed regular engagement with Dorset LEP and am looking forward to working with them on their ambitious plans for addressing Dorset's £2.5 billion productivity gap.'

**Conor Burns**  
MP for Bournemouth West,  
Alderney and Branksome East



'Dorset LEP has been instrumental in bringing Dorset's new Enterprise Zone, Dorset Innovation Park, to fruition. Securing enterprise zone status was a major economic boost for the local area.'

**Richard Drax**  
MP for South Dorset



'I am pleased to offer my full support to Dorset LEP and its vision to drive economic growth, particularly through the delivery of its £45.2 million Bournemouth International Growth (BIG) Programme.'

**Tobias Ellwood**  
MP for Bournemouth East



'I am proud to support the work of the LEP and especially its Invest in Dorset Ambassadors scheme which is helping to promote Dorset as a great place to invest and do business. I will continue to work with the LEP to ensure rural Dorset receives the attention it deserves.'

**Simon Hoare**  
MP for North Dorset



'I welcome Dorset LEP's efforts in tackling housing affordability and availability from a strategic and economic viewpoint. It is good to see places in West Dorset benefiting from government investment.'

**Oliver Letwin**  
MP for West Dorset



'It is great to see Dorset LEP's major Port of Poole Programme already delivering significant infrastructural improvements in Poole, improving facilities for commuters, cyclists and pedestrians.'

**Robert Syms**  
MP for Poole



'Dorset LEP is doing a fantastic job working with elected representatives to support businesses, boost skills and help to provide the necessary infrastructure our local residents and businesses need to thrive.'

**Michael Tomlinson**  
MP for Mid Dorset and North Poole

## Outlook and opportunity

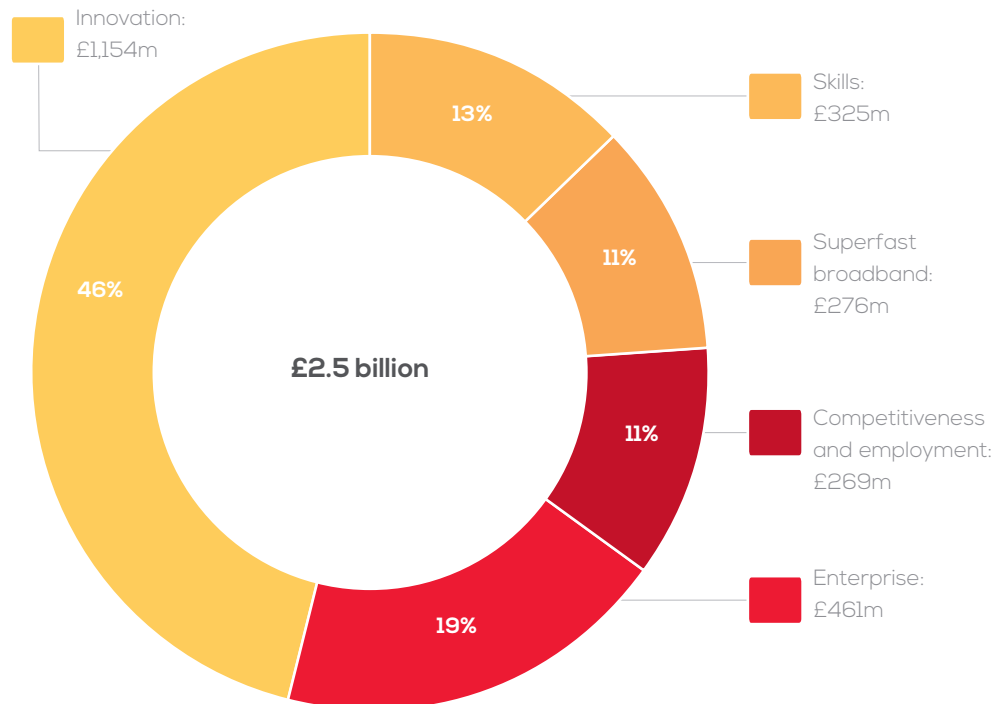
Dorset has a strong and resilient business community; its £16.76 billion GVA contributes significantly to the UK economy. We have a large business base relative to our population with low unemployment, good business survival rates and a robust advanced engineering and manufacturing base. We have the UK's 16th largest urban area with stunning countryside and a world-class coastline.

There are challenges ahead. Our economic productivity is £2.5 billion below the national average and we face increased global competition in a post-Brexit economy.

We must raise our game and demonstrate our ambition. We need to achieve a higher level of Government funding, invest in infrastructure, increase innovation, improve productivity rates and generate greater opportunities for Dorset. We must defy misconceptions about Dorset's economy and trumpet Dorset's successes and substantial economic contribution to UK plc, reinforcing our county's role as a serious business contender.

Instrumental to our success will be extending our collaboration with the private and public sectors across the whole of southern England. Our collective power and influence should not be underestimated.

### Closing the output gap



## The Dorset opportunity

We have a real opportunity to close our output gap through increasing:

Take-up of superfast broadband

Business births

Our competitiveness

Active innovation in business

Knowledge-based business

Digital and NVQ4+ skills and filling high-skill occupations

The number of older people in work

Specific strategies that we will focus on in the coming year include

### Investing in infrastructure

(physical and digital) to foster economic growth through roads, rail, ports, homes, appropriate land development and improved services **and broadband**.

### Defining key sectors and high-growth companies

which provide higher-paid and higher-skilled jobs – capturing national and international opportunities to boost and sustain growth, supply chains and exports.

### Capitalising our primary assets

including our two universities and one university college, our towns, Bournemouth International Airport, the Port of Poole, Lansdowne Business District and Dorset Innovation Park.

### Creating a highly-skilled, productive workforce

to meet the needs of our growing, competitive economy and priority sectors.

Launching a **'Statement of Intent'** and **'Dorset's Economic Ambition'** outlining Dorset LEP's priorities and goals.

### Aggressively pitching for substantial investment

for Dorset through the UK Shared Prosperity Fund.

Providing a sustainable, affordable and diverse **housing market**.

Collating evidence for our **Localised Industrial Strategy** – in co-production with Government.

**Widening Dorset's geographical outreach** to the south of England.

Highlighting and extending awareness about the depth and achievements of our work with **influential political leaders** and stakeholders.

**Responding to the Government's national LEP review 'Strengthened Local Enterprise Partnerships'** and updating our assurance framework.

### Financial information for the 2017/18 finance year ending on 31 March 2018.

Dorset LEP receives funding from Central Government through the Ministry of Housing, Communities and Local Government and the Department for Business, Energy and Industrial Strategy, as well as local partners to support its day to day activities and delivery of Dorset's Strategic Economic Vision and Plan. In addition to core programme funding received from Government, we receive further funding and investment from our partners including the local authorities which provide a significant resource to support our work and activities to directly impact Dorset's economy.

Furthermore, we have been successful in attracting one-off income to support specific projects and programmes. In 2017/18 this included funding for the Great South West, additional Apprenticeship work and Skills Escalator.

Funding stream	2017/18 Budgeted	2017/18 Expenditure	2018/19 Budgeted
<b>Apprenticeship Fund</b>	£4,999.00	£4,999.00	-
<b>Careers and Enterprise Company</b>	£102,805.47	£68,538.32	£84,267.15
<b>Core Fund</b>	£1,522,088.00	£569,112.00	£1,391,254.00
<b>Dorset Gateway</b>	£205,000.00	£205,000.00	£205,000.00
<b>Enterprise Zone</b>	£50,000.00	£50,000.00	-
<b>Great South West</b>	£10,000.00	-	£30,000.00
<b>Growing Places Fund – capital</b>	£4,649,417.00	£1,900,000.00	£3,349,417.00
<b>Growing Places Fund – revenue</b>	£831,407.00	£138,000.00	£723,354.00
<b>Local Growth Fund</b>	£19,209,638.00	£19,209,638.00	£29,868,567.00
<b>Skills Escalator</b>	£33,000.00	£38,000.00	-£5,000.00
<b>Total</b>	<b>£26,618,354.47</b>	<b>£22,183,287.32</b>	<b>£35,646,859.15</b>

## Meet the Dorset LEP team



**Lorna Carver**  
Director  
lcarver@bournemouth.ac.uk



**Rob Dunford**  
Deputy Director  
rdunford@bournemouth.ac.uk



**Kathryn Hill**  
Executive Assistant to Lorna Carver  
khill@bournemouth.ac.uk



**Charlotte Knight**  
Communications Manager  
cknight@bournemouth.ac.uk



**Katherine May**  
Programmes Manager  
kmay@bournemouth.ac.uk



**Adrian Hale**  
BIG Programme Transport Manager  
adrian.hale@bournemouth.gov.uk



**Tony Nelson**  
Skills Policy Manager  
tnelson@  
bournemouth.ac.uk



**Catherine Bonnett**  
Housing Policy Manager  
cbonnett@  
bournemouth.ac.uk



**Finn Morgan**  
Business Engagement  
and Dorset Gateway  
Manager  
fmorgan@  
bournemouth.ac.uk



**Sarah Powell-Pisareva**  
Enterprise Zone  
Manager  
spowellpisareva@  
bournemouth.ac.uk



**Martina Hanulova**  
Programmes Manager  
m.hanulova@  
bournemouth.ac.uk



**Lucy Green**  
Programmes Manager  
lgreen@  
bournemouth.ac.uk



**Catherine Beater**  
Enterprise Coordinator  
for Bournemouth  
and Poole  
catherine.beater@  
bournemouth.gov.uk



**Robert Firth**  
Enterprise Coordinator  
for Dorset (excluding  
Bournemouth and Poole)  
r.m.firth@dorsetcc.gov.uk

Contact us: 01202 962719



[dorsetlep.co.uk](http://dorsetlep.co.uk)

01202 962719

 @Dorsetlep