



**Bournemouth and  
Poole College –  
Engineering and  
Advanced  
Manufacturing**

**End of Project Report**

## **Project Summary**

Dorset is home to a thriving and varied advanced engineering sector, which includes Aerospace, Defence, Composite and Marine technologies. Altogether, they employ around 15,400 people and contribute £800 million to Dorset's economy. Some of the Dorset-based companies excelling in advanced engineering sectors include Cobham, Meggitt, BAE Systems, and Magellan Aerospace.

Dorset Growth Deal funding was used to upgrade facilities at Bournemouth and Poole College's North Road campus for engineering and advanced manufacturing students. To provide industry standard training, in response to requests from employers, to support local business skills gaps; aimed at improving the performance of existing businesses and to encourage the creation and growth of new ones.

## **Review of Business Case**

This project was included within the "Transforming Dorset" Strategic Economic Plan, which was used for the bid to Government for the first round of Growth Deal Funding. Dorset LEP secured £66.4m for Dorset in this first round and £565,150 was allocated to Bournemouth and Poole College for the Engineering and Advanced Manufacturing project for the 2016/17 financial year.

Following discussions with Bournemouth and Poole College and sign off from Dorset LEP Board in November 2015, the Engineering and Advanced Manufacturing project was brought forward with the aim of completing as much work as possible within the 2015/16 funded year, in order to utilise available funds.

## **Planned Outputs and Outcomes**

- Upgrade current training facilities (category D/C).
- Creation of 30 direct jobs, 120 indirect and 20 construction jobs.
- Training 354 engineering apprentices and 227 full time students annually.
- Deliver running cost and efficiency savings which reduces the carbon footprint.

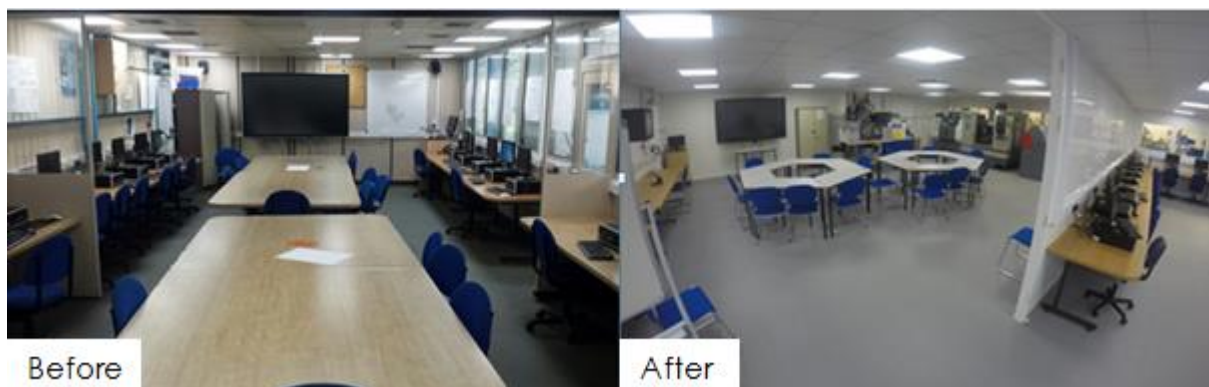
## **Achievement of Outputs**

Dorset Growth Deal funding enhanced the quality of the facilities at North Road, by enhancing the equipment and reducing the buildings carbon footprint and increase its energy efficiency, creating a better teaching environment.

The upgrades included:

- cladding of external walls
- replacements of windows (UPVC double glazed energy efficient units)
- roof repairs
- upgrading the college's welding bay facility with the addition of 16 new welding bays
- upgrading the college's motor vehicle practical teaching area including tyre changing facilities
- upgrading the college's motorcycle maintenance practical area
- investment in the lathe and milling areas
- AutoCAD classrooms and 3D printing facilities.

Approximately 1,664m<sup>2</sup> has been upgraded; these improvements have improved the grading of the Engineering and Advanced Manufacturing building from Grade D/C to Grade B. The works have also reduced the carbon footprint of the building by delivering running cost and efficiency savings of approximately £20,000 per annum.



## **Outcomes**

Within Dorset there is a dip in the 16-18 demographics for this year and this will be maintained until 2020, which will have an impact on number of students attended colleges and sixth forms across the County.

Despite this, Bournemouth and Poole College are maintaining their 'market share' and have actually increased this slightly. Referrals to the College usually taking place by word of mouth, so by providing good quality educational environments this will impact on the enrolment figures.

Initial enrolment figures for the Engineering and Advanced Manufacturing department show the following:

- 256 students have been enrolled, which exceeds the target of 227
- 324 apprentices have been enrolled, which is slightly below the target of 354, this is anticipated to be around 354 by the end of the academic year, as apprentices do not always start at the beginning of the academic year.

## **Benefits Realised to date**

The college currently works with over 177 engineering employers, through a combination of apprenticeships and membership of the college Engineering Forum including:

- Sunseeker
- Cobham
- Heatric
- Superior Seals
- Aish Technology

Discussions are taking place with these businesses about how they can influence and enhance the curriculum in order to educate the students in the best way and to provide additional soft skills that they will need in the workplace.

Lecturers will also be spending time with the businesses to gain current, up to date information from industry.

Bournemouth and Poole College have got substantial assurance over their governance procedures and financial process as they have been through an internal audit and an independent audit; as well as the audit that has been completed by Government.

## Review of Project Objectives

RAG Review of Objectives	Status	Comments
<b>Time</b>		The project was brought forward to utilise funds, it concluded five months earlier than originally profiled, in October 2016.
<b>Cost</b>		The project came in under budget, utilising the £565,150 Growth Deal investment and saving £512.89.
<b>Quality</b>		The project delivered all outputs exactly as described in the business case.
<b>Scope</b>		The project stayed within scope delivered all outputs exactly as described in the business case.
<b>Benefits</b>		The benefits realised to date have exceeded expectations at this stage. Ongoing monitoring of student numbers will capture further benefits over time.
<b>Risk</b>		No significant risks reported.

## Conclusion

Growth Deal Funding has enabled Bournemouth and Poole College to upgrade their Engineering and Advanced Manufacturing facilities which create a better teaching environment. Students will really benefit from using modern machinery and gain invaluable hands-on experience as they look to develop careers in one of Dorset's key sectors.

Diane Grannell, Principal of Bournemouth & Poole College said

"These new facilities will significantly improve our students' learning. The upgrade means that we can offer a more modern working environment, allowing students to be fully prepared when moving into work. We are very thankful to Dorset LEP for supporting this investment."

Gordon Page, chairman of Dorset Local Enterprise Partnership said

"We are delighted to have secured funding through the Dorset growth deal to invest in Bournemouth & Poole College's facilities which will help address the increased demand from local employers for highly skilled engineering and advanced manufacturing personnel. By helping to improve Dorset's education and training, we will create a more highly skilled and educated workforce which in turn will boost productivity and employment in the region."

## Contact details

### Bournemouth and Poole College

General enquiries: Tel: 01202 205205

Employers: Tel: 01202 205500

Web: [www.thecollege.co.uk](http://www.thecollege.co.uk)

### Dorset LEP

Katherine May, Programme Management Officer

[kmay@bournemouth.ac.uk](mailto:kmay@bournemouth.ac.uk)

01202 962720

<http://dorsetlep.co.uk/local-delivery/local-delivery-the-growth-deal/bournemouth-and-poole-college-engram/>