



DORSET
Local Enterprise Partnership

**ANNUAL REPORT
2016-2017**

**CREATING MORE JOBS AND
DRIVING ECONOMIC GROWTH IN DORSET
THROUGH PUBLIC, PRIVATE AND CROSS
SECTOR PARTNERSHIP AND INVESTMENT**

CONTENTS

3	INTRODUCTION FROM CHAIR OF DORSET LEP	
4	INTRODUCTION FROM DORSET LEP DIRECTOR	
5	MEET THE BOARD	
6	OVERVIEW / DORSET LEP IN NUMBERS	
7	DORSET GROWTH DEAL	
10	KEY THEMES:	
	• Connectivity	10
	• Housing	14
	• Rural Economy	15
	• Advanced Engineering and Manufacturing	16
	• Skills and Enterprise	18
	• Tourism	19
	• Innovation	19
20	GROWING PLACES FUND	
21	BUSINESS SUPPORT	
22	DORSET INNOVATION PARK - ENTERPRISE ZONE	
23	FINANCIAL SUMMARY	

INTRODUCTION FROM CHAIR OF DORSET LEP

*Dorset is alive
with opportunities*

It is home to a number of thriving businesses on both a global and national level. Over 200 foreign-owned businesses have chosen Dorset to set up part or all of their UK operations, and the county is above the national educational standard, making it an attractive place to do business and invest.

Our vision is that by 2033 Dorset will be one of Britain's Core City-Regions, and the most sustainable of these. To achieve this vision we have focussed on:

- Building a sustainable, competitive and innovative economy, driven by our key sectors
- Attracting and retaining high-skilled workers and employers
- Supporting the provision of accessible and affordable homes
- Promoting a world-class environment and high quality of life
- Delivering sustainable growth across Dorset

This annual report, our third so far, highlights some of our most impactful work carried out between April 2016 and March 2017.

This includes the announcement of an additional £19.5 million cash boost for Dorset from the Government for local growth projects. In total we have now managed to bring £98.5 million to the county via Local Growth Deals and we are pleased to share some of the successful achievements from this investment within this report.

We also reflect on our key themes of connectivity (transport and digital infrastructure), housing, rural economy, skills and enterprise, and tourism. These are all crucial areas for Dorset's economic growth and present both challenge and opportunity.

You can find out more about how we have been supporting local businesses to develop particularly through our Growing Places Fund revolving loan scheme and the excellent work of the Dorset Growth Hub.

It has also been a significant year for the development of our new Enterprise Zone, Dorset Innovation Park. The site aspires to be an advanced engineering cluster of excellence for the South West, building on strengths in marine, defence and energy and we are playing an active role in ensuring its success.

You'll see across these pages that it has been an exciting year for Dorset but we still have so much more to achieve and to ensure that the county receives the investment it deserves.

I would like to take this opportunity to thank all members of the Dorset Local Enterprise Partnership (LEP) community, for their commitment and dedication to strengthening local enterprise in Dorset.

I hope you enjoy reading this report.

Gordon Page,
Chair of Dorset LEP



INTRODUCTION FROM DORSET LEP DIRECTOR

Dorset Local Enterprise Partnership (LEP) is a business-led private and public sector partnership that aims to promote local economic growth and prosperity. Acting as a strategic gateway to funding, we support and deliver projects of long-term economic benefit for all in Dorset.

Our work is primarily concerned with enabling sustainable and productive economic growth through creating more jobs, upskilling our workforce and by providing the vital supporting infrastructure and housing. I am delighted that we are able to report significant successes within these fields.

Particularly pleasing are the significant developments made within our major Local Growth Fund programmes which are helping to improve infrastructure providing access into and around the Port of Poole and Bournemouth International Airport – two strategically important economic sites. Digital infrastructure is of paramount importance to Dorset's diverse economy, so we are delighted to be able to support a £7.4m programme to roll out Ultrafast broadband in the county.

We have led on bringing a new Enterprise Zone, Dorset Innovation Park to rural Dorset. Working in partnership with Dorset County and Purbeck District councils, we aim to create a world-class centre of excellence for advanced engineering, building on strengths in marine, defence and energy.

We're also proud to report our support for the development of skills crucial to the local Agri-tech, finance and business services and engineering sectors, key strengths in Dorset, following the installation of state-of-the-art facilities at Kingston Maurward College and Bournemouth and Poole College as well as the delivery of the national Enterprise Advisor Network in Dorset.

Nationally LEPs have demonstrated significantly to strengthen the UK economy through combining public and private sector investment.

Dorset LEP and its partners have raised Dorset's reputation as a great place to do businesses on a national and global scale and look forward to continuing in years to come. Our strengths are diverse, ranging from the defence sector to tourism, but all are helping to attract inward investment and make Dorset a better place to live and work.

Lorna Carver,
Dorset LEP Director



MEET THE BOARD



**GORDON
PAGE**

CBE DL (Chair)



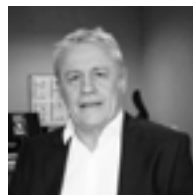
**JIM
ANDREWS**

Chief Operating
Officer,
Bournemouth
University



**CLLR JOHN
BEESLEY**

FIH
Leader,
Bournemouth
Unitary Council



**NIGEL
EVANS**

Principal,
Weymouth
College



**IAN
GIRLING**

Chief Executive,
Dorset
Chamber of
Commerce and
Industry



**EMMA
HUNT**

Deputy Vice
Chancellor,
Arts University
Bournemouth



**CLLR
REBECCA
KNOX**

Leader of
Dorset County
Council



**ALISON
MOORE**

Small Business
Representative



**LUKE
RAKE**

Principal and
Chief Executive,
Kingston
Maurward
College



**KIM
SLOWE**

Housing Build
Consultant



**ANDREA
SMITH**

Director and
Management
Consultant,
Mikand



**RICHARD
SMITH**

Director, The
Tank Museum



**JIM
STEWART**

Chief Executive,
Poole Harbour
Commissioners



**JOHN
SUTCLIFFE**

Head of
Strategic
Development,
Atlas Elektronik



**CLLR GARY
SUTTLE**

Leader of
Purbeck District
Council



**SARA
UZZELL**

Director,
Whitehall
Hospitality Ltd



**CLLR JANET
WALTON**

Leader of
the Council,
Borough of
Poole



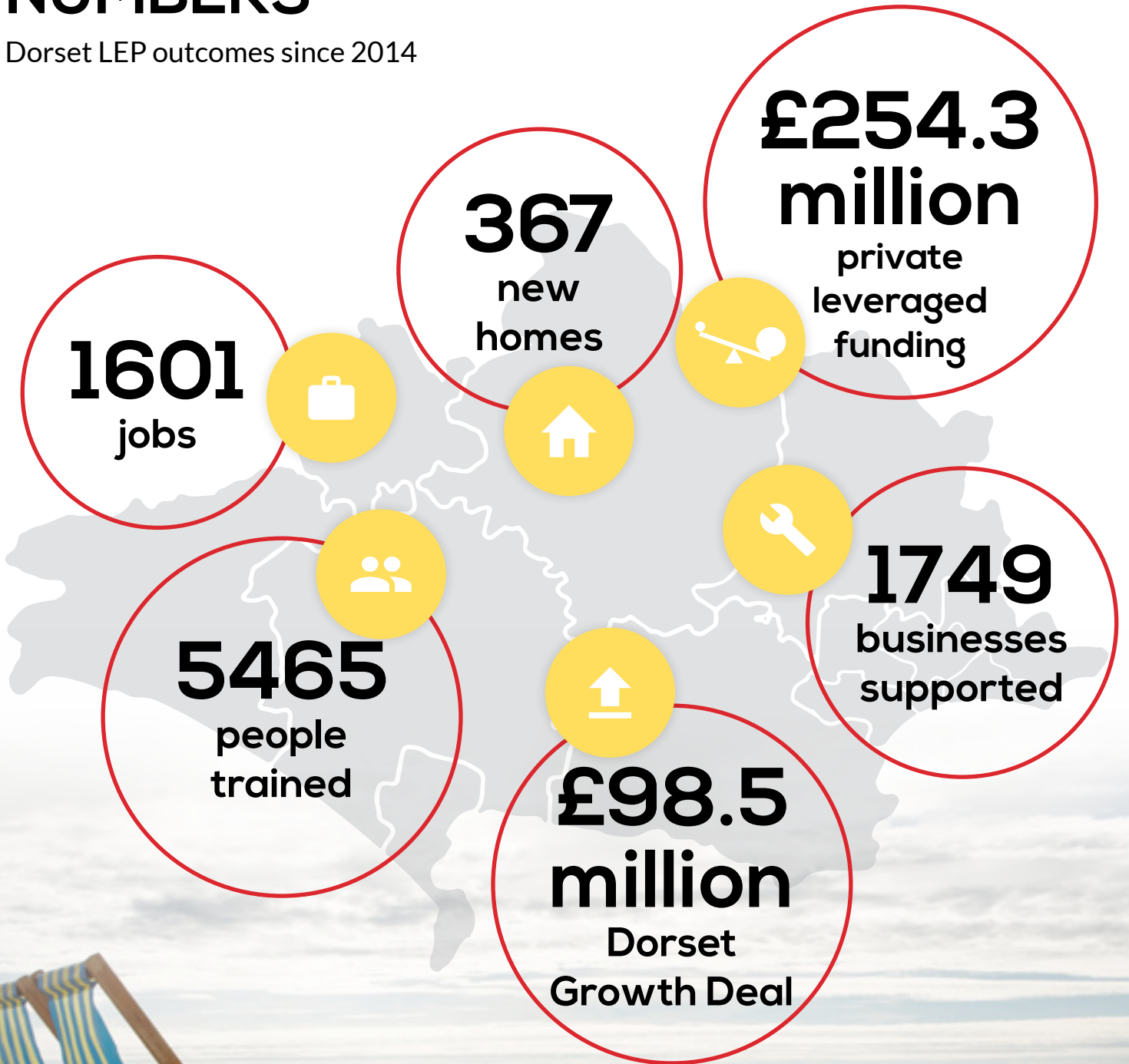
**ANDREW
WICKHAM**

Managing
Director, Go
South Coast Ltd

We are also grateful for the support of the following board members who stepped down during the 2016/17 period: Cllr Deborah Croney, North Dorset District Council; Robert Gould, former leader Dorset County Council; Diane Grannell, Principal & Chief Executive at Bournemouth and Poole College; Dr Bruce Grant-Braham, Senior Lecturer at Bournemouth University; Geoffrey Smith, General Manager of Rockley Park; James Weld, of the Lulworth Estate.

OVERVIEW / DORSET LEP IN NUMBERS

Dorset LEP outcomes since 2014



DORSET GROWTH DEAL

The Government's Growth Deal scheme provides funds to LEPs for projects that benefit the local area and deliver economic development outcomes.

In February 2017 Dorset LEP was awarded a cash boost of £19.5 million as part of a local deal for Dorset bringing our total amount of local growth funding to a significant £98.5 million.

This money is being used to support projects that are transforming the county through better transport, infrastructure, more housing, and more highly skilled jobs for all in Dorset.

These include:

- The Bournemouth International Growth (BIG) Programme – a major economic growth plan focused on improving connectivity, easing congestion, protecting existing jobs and creating new ones in and around Bournemouth International Airport and Wessex Fields
- The delivery of innovative orthopaedic research facilities at Bournemouth University
- The Western Dorset Growth Strategy, looking at a series of key housing and employment sites in the west of the county to provide around 1,000 new homes and 2,700 highly-skilled jobs
- New state-of-the-art Agri-tech facilities at Kingston Maurward College, Dorchester
- Vital building work improvements in Engineering & Advance Manufacturing and Financial and Business Services at Bournemouth and Poole College
- Improved access to the Port of Poole, helping to unlock land for housing and employment

These growth deals are a crucial part of our efforts to create an economy that works for everyone, and will ensure every region of the country has the chance to realise its full potential.

The latest round of funding is being used to support:

- Work to increase international investment in, and business at, the ground-breaking Orthopaedic Research Institute at Bournemouth University
- Key capital enhancements to Dorset tourist attractions (Literary and Scientific Institute, Bridport; Mary Anning Wing, Lyme Regis; Shire Hall, Dorchester; Swanage Pier, Swanage), boosting productivity by increasing visitor numbers, stay and spend
- Wallisdown Connectivity - a significant upgrade to the major Bournemouth-Poole commuter road which connects the two University Campuses to Poole, and suffers from congestion at peak times
- The transformation of the Lansdowne area of Bournemouth into a major new business district through a package of infrastructure and urban realm improvements
- Gillingham Access to Growth - transport infrastructure improvements to unlock housing and employment developments
- Holes Bay - enabling the release of a major housing site in Poole, delivering up to 1,350 new homes. Holes Bay is a designated government housing zone.

For further information visit:
www.dorsetlep.co.uk/local-delivery

Andrew Percy
Local Growth Minister 2016/2017



GROWTH DEAL CASE STUDY 1

Orthopaedic Research Institute

Growth Deal Funding up to: £700,000

ANTICIPATED
£100 MILLION
INVESTMENT
INTO DORSET

+ 500 NEW
JOBS



Breaking the mould from typical schemes funded by Local Growth Deals, in October 2016, Dorset LEP announced the installation of a new world-class orthopaedic gait analysis laboratory – the 'GRAIL' (gait real-time analysis interactive laboratory) – and state-of-the-art virtual reality training equipment at Bournemouth University's Orthopaedic Research Institute (ORI).

This was made possible thanks to a £700,000 local growth fund investment secured by Dorset LEP.

The GRAIL, one of just three in the UK and 23 in the world, is being used by Bournemouth University for the first time ever to analyse the outcomes on patients of orthopaedic surgical procedures and devices. The GRAIL includes a self-paced treadmill with integrated force plate, a 10 camera motion capture system, and a 180-degree floor to ceiling surround screen featuring augmented reality scenes.

The virtual reality training equipment is one of the first modules in the world to give surgeons VR training in orthopaedic surgery ahead of actual patient surgery. It includes:

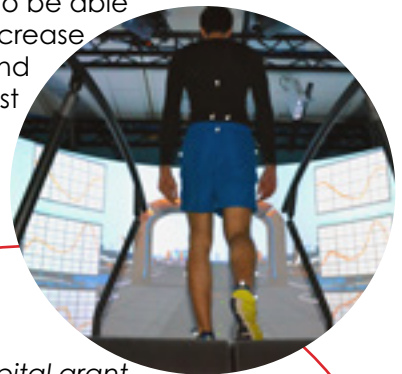
- virtual reality arthroscopy (a VR training system for hip arthroscopy based on virtual reality VR techniques). ORI will be the only place in the world to offer this type of keyhole surgery training
- virtual reality – TKR (a VR training system for total knee replacement). ORI will be the first centre in Europe to offer this facility

The funding secured through Dorset LEP has also been invested in equipment for muscle testing (Primus RS), joint angle measurement, muscle force testing as well as models of hips for demonstrations and video recording equipment.

The cutting-edge laboratory and equipment has further established ORI as a centre of excellence in orthopaedics, it has meant research funding has been secured and 17 peer reviewed journals have been published. As well as working with local hospitals on trials and local and international companies on research collaborations.

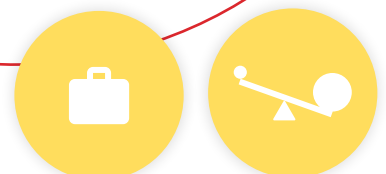
It is anticipated that ORI will attract qualified practitioners and students from around the world to train at Bournemouth as well as generate up to £100 million of investment into Dorset alongside 500 new jobs. In its first year to March 2017, ORI delivered 8 new jobs and generated private investment of £210,142.

Dorset LEP is also pleased to be able to further support ORI to increase international investment and business as part of our latest growth deal allocation.



Thanks to the capital grant from Dorset LEP, ORI now has world-class research and training facilities here in Bournemouth. Our virtual reality training simulators allow us to train surgeons in the ORI labs, where in the past they would be going through a learning curve on real patients. It's a big advance and we're generating huge interest from around the country and abroad.

Professor Rob Middleton,
Head of ORI





GROWTH DEAL CASE STUDY 2

Western Growth Corridor

Growth Deal funding up to £600,000



Weymouth & Portland is the smallest borough in Dorset. It is a densely populated area with the urban area covering 59% of the borough and housing 81% of the population.

A vibrant and historic area, it has been instrumental in the development of advanced technologies such as sonar, torpedoes and submarine systems. Portland has an active port which has built upon its Royal Navy heritage by accommodating some of the largest cruise liners in existence.

Dorset Councils Partnership, a tri-council partnership, its partners and the local community wanted to shape and develop a clear strategy to deliver a brighter future for Weymouth town centre and also contribute to the wider economic growth potential of Weymouth, Dorchester, and Portland.

Dorset LEP was able to fund feasibility work in advance of developing a strategy to develop 1,000 new homes and in excess of 2,700 jobs across five brownfield sites, amounting to 58 hectares in the town centre.

The feasibility work involved five separate studies:

1. Transport and movement
2. Skills
3. Business and housing development
4. Culture & Tourism
5. Weymouth Town Centre Business Plan

These studies were completed in March 2017 and have supported the establishment of a wider economic growth strategy which has been adopted by Dorset County Council, Dorset Council Partnership and Dorset LEP.

The studies have also enabled swifter progress to be made on the Weymouth Town Centre regeneration programme. In September 2016 Weymouth and Portland Borough Council, with the Management Committee, approved an additional £200,000 from its reserves to progress the Weymouth Town Centre Masterplan. They also generated considerable interest from the private sector and development partners.

By the end of March 2017 301 homes had been delivered, with 8.8ha of land unlocked and 529 sqm commercial floorspace delivered. This is to bring greater prosperity and create a vibrant and exciting place to live, work and visit.

KEY THEMES

CONNECTIVITY

We aim to continually improve connectivity through investment in transport infrastructure and services and new generations of digital infrastructure.

We have been able to award over £68 million to fund large scale transport and Ultrafast programmes to improve access and online connectivity to some of the county's key economic sites.

Highlights during this period include:

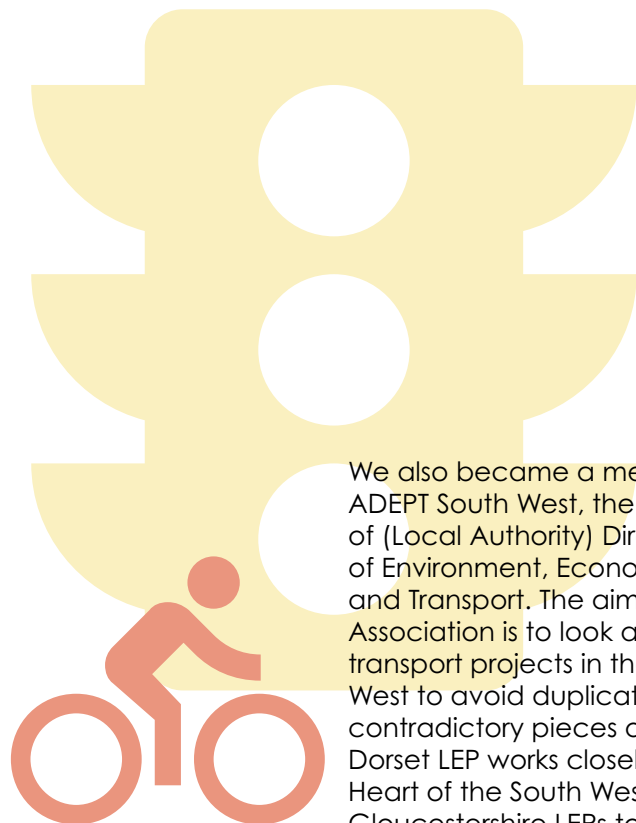
- The completion of the major renewal of the A338 Bournemouth Spur Road, the key link road to Bournemouth Airport
- The announcement of over £20 million investment to implement a series of highway improvements along the A338 and B3073 corridors including improvements to Blackwater Junction, a proposed new junction at Wessex Fields, and improvements to Chapel Gate roundabout near the airport
- A £3.3 million investment and completion of improvements to the A349 (the main link road

into the Port of Poole and the town centre from the A31) at Gravel Hill, stabilising and strengthening embankments, increasing capacity for motor vehicles and improving facilities for pedestrians and cyclists

- The start of major work at Poole Bridge to implement new approach spans (which carry the traffic from the land to the main section of the bridge), helping to ensure the bridge continues to offer a vital route into the port
- Planning to kick-start the delivery of the Ultrafast Broadband Programme to over 3,800 premises in the county with Dorset County Council

"An improved transport and digital infrastructure is fundamental to supporting local economic growth. A better connected Dorset helps to create the right conditions for businesses to thrive and for more highly skilled jobs and housing to be created."

Rob Dunford,
Interim Dorset LEP Director



We also became a member of ADEPT South West, the Association of (Local Authority) Directors of Environment, Economy and Transport. The aim of the Association is to look at prioritising transport projects in the South West to avoid duplication or contradictory pieces of work. Dorset LEP works closely with Heart of the South West and Gloucestershire LEPs to engage with ADEPT. For further information visit www.adeptnet.org.uk

TRANSPORT CASE STUDIES

Port of Poole Programme

Growth Deal Funding up to: £23,310,000



In April 2016, we unveiled details of a £23.3 million investment into four major transport schemes to improve access into and around the Port of Poole. These included:

- A £3.3 million investment into the A349 (the main link road into the Port of Poole and the town centre from the A31) at Gravel Hill and Dunyeats
- £307k allocated to Hatch Pond to upgrade signalling, signage, lighting and improve facilities for pedestrians and cyclists
- £565k for enhancements to the Darby's Corner roundabout and to improve facilities for pedestrians and cyclists
- £7.3 million superstructure replacement for Poole Bridge which offers a vital route into the port
- £11.7 million worth of major Townside access improvements to the Port of Poole on the town side of the Backwater Channel and new development sites

So far the improvement work at Gravel Hill, Dunyeats and Hatch Pond has been completed resulting in:

- stronger and more stabilised embankments
- a newly constructed and widened shared pedestrian/cycle lane providing the missing cycle link connecting the village of Merley to Poole town centre
- reduced speed limit from 60mph to 40mph to help make journeys safer for school children and commuters walking or cycling in the area
- road widening to improve traffic flow and reduce congestion
- new toucan crossings suitable for both cyclists and pedestrians
- the installation of new energy efficient traffic signals

The major replacement work at Poole Bridge was started in September 2016 to replace the bridge's approach spans and their supporting abutments and piles. This is expected to be completed in autumn 2017.

Overall the programme is helping to boost economic growth and bring an anticipated £500 million of leveraged private investment in to the area.

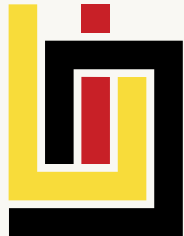


Unlocking regeneration sites to create business opportunities and help to make Poole an attractive place for business to invest in

Delivering around 2,500 new homes around the Port of Poole

Bournemouth International Growth Programme

Growth Deal Funding up to: £45,200,000



BOURNEMOUTH INTERNATIONAL GROWTH PROGRAMME

PLANNING

Effective planning framework

Development of site-wide masterplans for both Aviation Business Park and Wessex Fields to ensure both sites provide a high quality environment to locate and do business. Providing an effective planning framework to enable existing companies to expand to encourage business to relocate to the sites

SITE IMPROVEMENT

66ha land ready for development

Working to constantly improve the offer on both Aviation Business Park and Wessex Fields development sites for investors with internal site infrastructure improvements including roads, superfast and ultrafast connectivity as well as upgrading utility provision.

WORKSPACE PROVISION

£500m levered in from private sector

Promoting Bournemouth Airport and Wessex Fields as business locations. Targeting local business expansion & relocation and international inward investment. Establishing business to business relationships and creating local networks. Working with government & business to attract business to locate & develop at the sites.

BIG RESULTS
£500 MILLION
BOOST FOR LOCAL ECONOMY

HOUSING

Housing to deliver 350 new units

Helping the private sector to deliver designated housing sites by supporting wider transport and infrastructure and supporting government's ambition for creating more affordable local housing.

TRANSPORT

£45.2m of investment in local transport

Delivering improvements to the local transport network to enable growth of employment in Dorset and beyond that includes road reconstruction, safer roads, new higher capacity junctions and future plans for cycle route and bus service.

SKILLS DEVELOPMENT

10,000 jobs and increased skills

Delivering on cohesive strategy for skill and workforce development for the anticipated 10,000 new jobs that will be created on and around employment sites.

HEALTHCARE ACCESS

Better access to healthcare

Better access to Royal Bournemouth Hospital – for patients, staff, visitors and ambulances.

The Bournemouth International Growth (BIG) Programme is an ambitious major economic growth plan focused on employment and development around Bournemouth Airport and Wessex Fields. Dorset LEP secured over £45 million through the Dorset Growth Deal to fund the programme.

The six-year programme involves a series of transport and infrastructure improvements along the A338 and B3073 corridors aimed at facilitating better access into and around Bournemouth Airport as well as unlocking employment land at Aviation Business Park and at Wessex Fields, close to Royal Bournemouth Hospital.



In May 2016, the nine month long £22 million major rebuild of the A338 was completed marking the first completion of a Dorset Growth Deal Project.

Dorset County Council was responsible for delivering the project which was completed on time and on budget. It was also one of the greenest road maintenance projects in the country.

The second phase of major transport schemes (announced at the end of September 2016) sees over £20 million of investment in a series of highway improvements along the A338 and B3073 corridors including:

- improvements to Blackwater Junction
- a proposed new junction at Wessex Fields
- possible widening between Blackwater and Cooper Dean
- improvements to Chapel Gate roundabout



Boosting the economy by improving roads, easing congestion and protecting & creating jobs in and around Bournemouth Airport and Wessex Fields.

2015-2021

TRANSPORT IMPROVEMENTS

1. A338 reconstruction - completed May 2016
2. Chapel Gate roundabout
- 3a Blackwater - B3073 junctions
- 3b Blackwater - A338 slip roads
4. Hurn Roundabout
5. Parley Eastern link road
6. Wessex Fields
7. A338 widening
8. Longham mini-roundabouts
9. Cycle links
10. Bus enhancements

SITE IMPROVEMENT

- Surrounding airport area and Aviation Business Park
- Wessex Fields - new link road serving employment area, plus providing a second access route to hospital.

WORKSPACE PROVISION

- Aviation Business Park - 60 ha of business and manufacturing land.
- Wessex Fields - 6 ha of business and office employment land.

Together both areas provide potential for the creation of 10,000 jobs locally

HOUSING

- Parley Cross residential development 350 homes by 2028.



For further details visit:

<http://dorsetlep.co.uk/local-delivery/local-delivery-the-growth-deal/bournemouth-international-growth-programme/>

HOUSING

Supporting Future Housing Provision

Housing affordability and availability are major barriers to economic growth in Dorset. Businesses regularly talk of difficulty in attracting high-skilled staff due to the lack of quality housing and above average house prices.

In 2016 we commissioned an independent study into future housing provision in Dorset in order to address these issues and to help identify opportunities both for funding and accelerating delivery.

The final report 'Supporting Dorset's Economic Growth – Future Housing Provision' was launched in February 2017. This was set against the backdrop of the government's housing white paper released in the same week.

The report investigates housing provision, key issues and future options from a local perspective and outlines a number of recommendations to help accelerate housing delivery across Dorset such as greater public sector intervention, promoting the private rented sector and increasing the capacity of the construction industry.

Ongoing work continues as part of our housing sub-group.

Unlocking land for new homes

Housing is also a key factor in securing and awarding local growth funding.

Our Port of Poole Programme aims to deliver 2,500 new homes in the town, whilst the Bournemouth International Growth Programme aims to deliver around 350 new homes of which up to 50 per cent will be affordable.

In West Dorset we have been able to fund a much-needed feasibility study to support housing development along the Western Growth Corridor, and secure funding to unlock development of 1350 homes in Gillingham.

We have also enabled the release of a major housing site in Poole to deliver up to 1,350 new homes.

"Dorset LEP has been looking at the links between housing and economic growth. We are working actively with developers, planners, land owners and policy holders to achieve Dorset's vision for a sufficient supply of affordable housing. We are also engaged with central government in seeking funding to support the associated infrastructure works required to bring some of our larger sites forward for development."

Andrea Smith
Dorset LEP board member (Housing)

RURAL ECONOMY

Dorset has a very long and proud tradition of farming, which has helped to shape Dorset's beautiful landscape. Rural jobs are acknowledged as making a significant economic contribution in specific localities and to Dorset as a whole.

The Rural Enterprise Group (REG) was established as a sub-group of the Dorset LEP Board to identify and encourage the growth of private enterprise and prospects for jobs in the rural areas of the county.

In July 2016 the REG released its Dorset Rural Enterprise Priorities paper to recognise the issues, opportunities and barriers to growth in rural Dorset, whilst appreciating the contribution made by the natural environment (recently valued at £1.5bn of gross value added per annum). The paper links with Government plans for boosting productivity in rural areas and identifies priority actions to encourage, not only the growth of existing sectors, but also the diversity of businesses, to increase the opportunities for those who live and work in our countryside.

For further information visit www.dorsetlep.co.uk/rural-enterprise-group/

Working in partnership to address Rural Productivity across the South West

In early 2017 we entered into discussion with the Heart of the South West LEP, Swindon & Wiltshire LEP, and Cornwall & the Isles of Scilly LEP to create a new South West Rural Productivity Commission.

The aim of the Commission is to collectively explore the issues around rural productivity and growth whilst gathering evidence from a range of sources and stakeholders.

Our participation confirms our recognition of the importance of rural growth, productivity and prosperity being tackled alongside urban growth, to ensure that improvements impact on all parts of the economy.



Case study: Funding the latest Agri-tech training facilities

In June 2016 we helped unveil a new £1.2 million state-of-the-art agri-tech centre at Kingston Maurward College, a leading land-based and related subject areas college in Dorchester. The centre was co-financed with funds secured by Dorset LEP through the Dorset Growth Deal.

The contemporary agri-tech centre took five months to build and positions Kingston Maurward College at the forefront of agricultural training facilities in the region. The purpose built facility comprises an agricultural classroom, an IT suite, a high spec workshop and machinery facilities including a fleet of tractors.

38 apprentices and 99 full time students were trained at the Agri-tech centre throughout the 2016/17 academic year.

The College is extremely grateful and fortunate to have had the support of Dorset Local Enterprise Partnership in order to be able to complete this project. Access to these contemporary facilities and equipment will enable the take up of breakthroughs across nutrition, informatics, remote sensing and low impact agriculture. All of this can be exploited across the rural Dorset economy to help increase productivity.

Clare Davison,
former Principal of Kingston Maurward College

ADVANCED ENGINEERING & MANUFACTURING



Dorset is home to a thriving and varied advanced engineering and manufacturing sector which includes Aerospace, Defence, Composite and Marine technologies. Altogether, they employ around 17,300 people and contribute £803 million to Dorset's economy.

As one of Dorset's priority areas for economic growth, we have played an active role in supporting the sector, particularly through the work of our Invest in Dorset team.

Dorset Engineering & Manufacturing Cluster

In 2016 Dorset LEP supported the appointment of a Marketing and Communications Intern to help promote the Dorset Engineering & Manufacturing Cluster (Dorset EMC). The Dorset EMC was created to provide a voice for the sector across Dorset, and enable companies to collaborate, increase their sustainability, and help achieve their full potential. It has now evolved into a successful network of 300+ businesses across different supply chains.

South Coast Marine Cluster

We also became a member of the South Coast Marine Cluster, a large public / private partnership, set up to continue to strengthen marine and maritime-related economic growth and productivity across the UK's south coast. The South Coast Marine Cluster works in partnership with the Department for International Trade to encourage overseas companies to invest in the area.



Dorset LEP is a member along with other South Coast LEPs Enterprise M3, Solent, Heart of the South West, and Cornwall & Isles of Scilly. In January 2017 the Cluster commissioned an inward investment evidence study to highlight the great assets that the South Coast has, such as Dorset's strengths in R&D defence, RNLI and world leading manufacturers.

Port of Bremerton MoU

In March 2017 Dorset LEP signed a Memorandum of Understanding (MoU) with the Port of Bremerton in Washington State, USA. This came about following our participation in a parent MoU with Washington State USA as part of South West Aerospace.

The MoU with Port of Bremerton aims to promote cooperation between our organisations and the sector of advanced engineering and manufacturing, particularly aerospace, defence and marine, building on shared key sector strengths through activities such as:

- Knowledge sharing
- University pairing programmes
- Trade missions
- Linking businesses with common objectives





Case study: Supporting the Science, Technology, Engineering and Mathematics (STEM) agenda in Dorset



If Dorset is to remain competitive for manufacturing employers such as Sunseeker, then the investment in modern and cutting edge engineering training facilities is paramount.

Alex Bowman,
Talent Manager at Sunseeker International

In October 2016 Dorset LEP helped to officially open the newly refurbished Engineering and Advanced Manufacturing facilities at Bournemouth & Poole College.

The major upgrade was made possible thanks to a £565,150 investment secured by Dorset LEP through the Dorset Growth Deal.

The works, which significantly enhance the quality of the facilities and learning environment as well as reduce the building's carbon footprint and increase its energy efficiency, included:

- cladding of external walls, replacements of windows (UPVC double glazed energy efficient units), roof repairs and new lighting
- classroom renovations including upgrades to the:
 - welding bay facility with the addition of 16 new welding bays
 - motor vehicle practical teaching area including tyre changing facilities
 - motorcycle maintenance practical area
- investment in the lathe and milling areas, AutoCAD classrooms and 3D printing facilities.

Bournemouth & Poole College's advanced manufacturing and engineering facilities will lead to the creation of 30 direct jobs. In the 2016/17 academic year 370 engineering apprentices and 464 full time engineering students were trained in the new facilities.

SKILLS AND ENTERPRISE

Dorset LEP is committed to increasing the skills levels of the workforce and to raise aspiration, employability and entrepreneurial opportunity. This is actioned mainly through the work of the Dorset Employment and Skills Board but enhanced by the recent appointment of a new Dorset LEP Skills Policy Manager.

Area review

In late 2016 / early 2017, Dorset LEP was involved in an area review of Dorset's post 16 college provision of Bournemouth & Poole College, Kingston Maurward College and Weymouth College. The outcome of the review was that all three Colleges would remain as standalone institutions but that they would benefit from further collaborative working to strengthen the Further Education offer to ensure that local skills and employability needs are met.

Enterprise Advisor Network

Dorset LEP was the 36th LEP to sign up to the Careers and Enterprise Company national Enterprise Advisor Network Programme, to help improve employability and student/ employer encounters. Two Enterprise Coordinators have been recruited to serve the Dorset LEP area and this has been possible through working with our partners Dorset County Council and Bournemouth and Poole Councils and their networks to provide match funding.

Enterprise Advisers are volunteers drawn from businesses who work directly with the school or college's leadership team to develop effective employer engagement plans. They work with other local businesses to equip young people with the skills and to make the informed choices about their career. Although our programme only started fully in January 2017 we have made significant progress towards our aims of 40 schools and 20 Enterprise Advisors by August 2017. By March 2017 we had 30 schools and 13 Enterprise Advisors on board.

Dorset Employability Charter

The Dorset Employability Charter was created in May 2016 to help improve the employability skills of young people across Dorset. It encourages education providers and employers to work together to help prepare young people in Dorset for the world of work and equip them with the necessary skills, attitudes, experience and motivation. To obtain charter status, schools and employers in the area must show evidence of working together.

There are ten charter topics which schools and employers can gain recognition for such as: providing young people with the opportunity to discuss their future career choice or aspiration with a relevant employer; helping young people to understand the different opportunities that come from being employed, self-employed and entrepreneurship; and providing information about current and future labour market trends.

THE CAREERS &
ENTERPRISE
COMPANY



Gordon Page,
Chair of Dorset LEP

The Dorset Employability Charter forms part of the LEP's commitment to raising the aspirations, employability and entrepreneurial capability of Dorset's young people. The scheme is helping to better connect education providers and employers to prepare our young people for work thus helping to improve well-being and economic prosperity in Dorset.



INNOVATION



TOURISM

Tourism is a strategic sector for Dorset LEP, with 27,000 people employed across the county.

The Dorset Tourism Association was established in 2016 to help unify the county's vast and diverse tourism sector and bring it all under one umbrella.

Dorset Tourism Association is a 'free to join' membership organisation working with tourism trade membership associations, partnerships and individual businesses. It aims to promote tourism, and improve the overall awareness, effectiveness and quality of tourism provision in Dorset for and to the benefit of the members, Dorset's residents, tourists and visitors.

In March 2017 the association held its first conference titled 'Eyes on the Prize', which took place at Kingston Maurward College in Dorchester.

The 'sold out' event included over 120 delegates representing the entire geography of Dorset. They represented tourism businesses from hotels, B&B, holiday accommodation, camping and holiday parks, visitor attractions to transport providers including the harbours, airport and bus companies as well as destination management teams and other tourism trade businesses and organisations.

For further details visit: <http://dorsetlep.co.uk/dorset-tourism-association/>

In 2016 Dorset LEP joined forces with five other nearby LEPs – Solent, Enterprise M3, Coast to Capital, Thames Valley Berkshire, plus Kent and Medway within the South East LEP – to make a powerful bid to ministers setting out a strong case that the South is unrivalled for its innovation and industrial capabilities.

'Innovation South' strategic partnership was born to promote the region's strengths in:

- Connected Digital Technologies (5G Mobile, Internet of Things, Creative Digital Media, Photonics, Big Data Analytics, Cyber security, Gaming, Augmented Reality, Gamification, Autonomous systems and vehicles, Smart Cities)
- Bio-Science (Medical Technologies, Health & Well-Being, Digital Health Regenerative Medicine, Musculoskeletal, Plant & Food Production, Animal Health)
- Advanced Engineering (Automotive, Aerospace, Autonomous, Systems, Satellites, Defence, Marine, Composite Materials)
- Marine & Maritime (Advanced manufacturing materials for marine industry, Ocean and Climate Change monitoring, Maritime Data, Maritime Autonomous Systems)
- Digital as an Enabling Technology driving potentially world-leading ideas, products and technologies across multiple sectors, existing, nascent and future. Universities across the geography are also part of the bid.

The consortium of businesses, universities, and LEPs in the South of England was chosen to carry out a Government-endorsed Science and Innovation Audit to identify the region's innovation strengths in Digital Enabling Technologies, and examine their potential influence on business innovation and growth in four of the region's key sectors.





GROWING PLACES FUND

Dorset LEP has been provided with £9.4m from central government as the Growing Places Fund, a revolving loan scheme, to support major capital investment and regeneration in Dorset.

We have committed to using the Growing Places Fund to generate economic activity in the short term by addressing immediate infrastructure and site constraints which promote the delivery of jobs and housing.

To date Growing Places loan funding has been allocated to:

- Alder Hills – Centre for Social Enterprise Excellence in Poole
- Bionanovate Ltd., Poole
- Boscombe Regeneration, Bournemouth
- Castle Court, Osprey Quay, Portland
- Cobham Gate, Ferndown
- Field International Ltd., Poole
- Hamworthy – Transport Smarter Choices, Poole
- North Dorset Business Park, Sturminster Newton, Dorset

Case study: Cobham Gate Business Park

Cobham Gate Business Park located on Ferndown Industrial Estate is recognised as one of the region's most important employment sites and was made possible thanks to £1.5 million loan from Dorset LEP Growing Places Fund.

Cobham Gate developers Glenbeigh Developments Ltd was awarded funds to help bring forward the strategically significant employment site which had been stalled for some time. The money has been used to enable access to the site and to provide supporting infrastructure.

The Cobham Gate business site extends to approximately 25 acres. The first newly completed unit at Cobham Gate is being handed over to parcel delivery handed over to parcel delivery firm DPD for use as its new depot.

“Cobham Gate is a fantastic example of how the Growing Places Fund is being used to unblock much needed employment land. We are delighted to see a major company such as DPD begin to move onto the site and helping to boost job growth in Dorset.”

Gordon Page,
Chair of Dorset LEP

BUSINESS SUPPORT - DORSET GROWTH HUB



Dorset Growth Hub co-ordinates the provision of local business information and expert advice to businesses – be it a pre-start, start-up or an existing enterprise.

A three year SME Competitiveness Programme, funded by the European Regional Development Fund (ERDF) recently launched in June 2017 and the core services of the existing Dorset Growth Hub (funded by Dorset LEP through BEIS) are at the heart of this delivery, providing the web platform, telephone advice service and initial face to face diagnostic meetings with businesses.

The SME Competitiveness Programme has enabled additional support to be on offer and is provided through dedicated strands of activity including:

- pre-start and start-up support
- supporting growth
- improving digital capabilities
- accessing finance
- mentoring

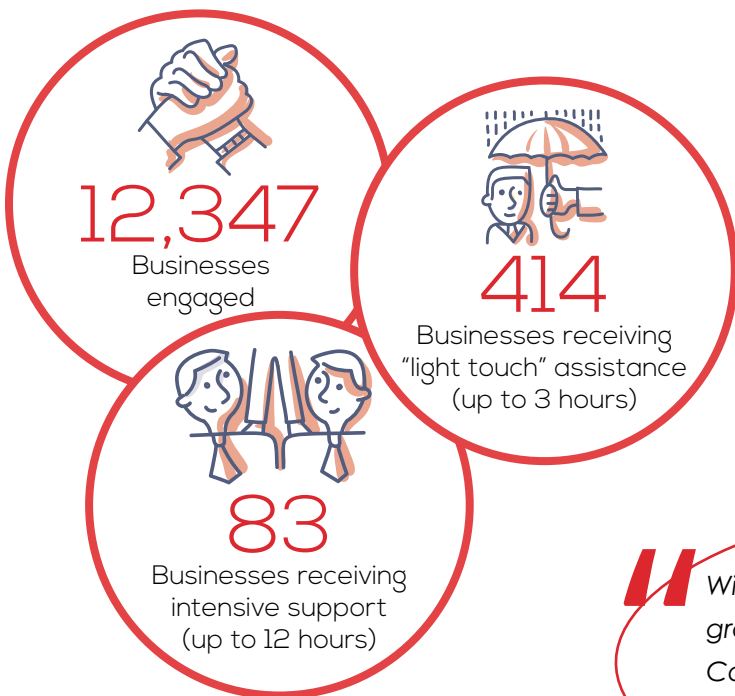


Dorset Growth Hub was launched in 2014 and since then has helped over 1,500 businesses across Dorset to develop, grow and reach their full potential, as well as engaging nearly 30,000 businesses on the website and at events. A grant scheme delivered in the first year assisted 43 companies with projects to enable growth and in turn, create 206 new jobs.

One local business that has benefitted from Dorset Growth Hub's services is Southbourne based Conker Spirit, Dorset's first independent gin distiller. Entrepreneur and Conker Spirit founder Rupert Holloway contacted Dorset Growth Hub seeking business support for his start-up venture. After meeting with a Growth Hub advisor, it was identified that Rupert's business was scalable and that he would benefit from funding. The Investment Specialist at Growth Hub helped him to apply for a grant of £10,000. This enabled his business to grow and Conker Spirit has now become a nationally recognised brand.

The new SME Competitiveness programme is led by WSX Enterprise and Dorset Growth Hub with a range of support partners. The main consortium partners in the programme are WSX Enterprise Ltd (Lead partner), The Arts Development Company, Dormen, Silicon South and YTKO, including Outset and GetSet for Growth. The programme has the backing of local authorities across the county with Dorset LEP acting as a strategic partner and aims to help Dorset based SMEs from eligible ERDF sectors grow and become more competitive.

The £660,000 of government funding that Dorset LEP has secured for the hub until March 2018 will ensure that hundreds of businesses across Dorset continue to benefit from this comprehensive business support services.



Rupert Holloway,
founder of Conker Spirit

With very little of my own money available, securing a grant from Dorset Growth Hub was essential in getting Conker Spirit off the ground. What's more, the guys at the Growth Hub had a wealth of business knowledge and advice at my disposal. Invaluable!

DORSET INNOVATION PARK - ENTERPRISE ZONE



Dorset Innovation Park aspires to be an advanced engineering cluster of excellence for the South West, building on strengths in marine, defence and energy.

Enterprise Zones are part of the government's long-term economic plan to support business and the creation of jobs by transferring the leadership of growth to local areas.

A single site accommodating 56 hectares of land, of which 35 hectares is developable, it is the second largest strategic employment site in the Dorset LEP area.



DORSET INNOVATION PARK



2016 / 2017 highlights

- Work starts to build 20 new employment units on the site. The units will be fully serviced and let to businesses on 'easy in, easy out' terms and are due for completion in autumn 2017.
- Dorset LEP signs MoU with Central Government and local authority partners (Dorset County Council and Purbeck District Council) to set up and operate the Dorset Innovation Park Enterprise Zone. The Enterprise Zone status went live on 1 April 2017.
- Land purchased from Homes and Communities Agency.
- Dorset LEP submits 5-year Implementation Plan to Government.
- For further information visit www.dorsetlep.co.uk/dorset-innovation-park



 For the latest updates follow @Dorsetinnovpark on Twitter

FINANCIAL SUMMARY

CORE FUNDING

	SOURCE	AMOUNT
Operational Core Funding	DCLG	£250,000
Operational Strategy Funding	DCLG	£250,000
Match Funding (cash)	Local partners	£105,000
Match Funding (in kind)	Local partners	£145,000
Local Transport Body Money	Originates from LTB through BBC	£59,303
Transport Excellence Grant	DfT	£27,972
Enterprise Zone Grant	DCLG	£50,000
Bank Interest		£42,697

FINANCIAL OVERVIEW 2016-17

	INCOME	EXPENDITURE
Core Funding 16-17	£250,000	
Strategy Funding	£250,000	£128,635
Match Funding	£105,000	
Local Transport Body Grant	£59,303	
Transport Excellence Grant	£27,972	£27,972
Bank Interest	£42,697	
Staffing Costs		£312,369
Sponsorship Costs		£11,742
Support Costs		£26,070
Enterprise Zone	£50,000	£259,389
Other Costs		£20,663
Total Operating Budget/ Expenditure	£784,972	£786,840

KEY

DCLG - Department of Cities and Local Growth
DfT - Department for Transport
LTB - Local Transport Body
BBC - Bournemouth Borough Council

GROWTH DEAL

	INCOME	EXPENDITURE
Funding from the Government for Growth Deal	£12,306,635	
Commitment from existing schemes	£7,065,201	
Expenditure on Projects		£19,371,836

GROWTH HUB

	INCOME	EXPENDITURE
Funding from the Government for Growth Hub	£205,000	
Payments made to Growth Hub		£205,000

CAREERS AND ENTERPRISE COMPANY

	INCOME	EXPENDITURE
Funding from Careers and Enterprise Company	£36,457	
Expenditure		£36,457

GROWING PLACES FUND

	INCOME	EXPENDITURE
Growing Places Fund Allocation	£9,446,417	
Loans Allocated as at 31 March 2017	(£6,097,000)	
Growing Places Fund Balance as at 31 March 2017	£3,349,417	
Interest Temporary Loans	£184,302	
Legal & Professional Costs		£37,773
Total	£184,302	£37,773

CONTACT THE DORSET LEP

For more information visit our website at:
www.dorsetlep.co.uk



Follow us on Twitter:
[@Dorsetlep](https://twitter.com/Dorsetlep)



Join us on LinkedIn:
www.linkedin.com/grp/home?gid=4165194

