

Dorset Local Enterprise Partnership is leading the development of a Local Industrial Strategy (LIS) for Dorset.

Local businesses, communities, BCP Council, Dorset Council, universities, colleges and many other local organisations have contributed to the ideas in this strategy which will provide a detailed plan focused on increasing productivity, innovation, earnings and wellbeing across our county.

Here are the highlights of our plans so far that will frame Dorset's Industrial Strategy.

We welcome comment – please read this document then click on the button to share your feedback:

[Share feedback](#)

Dorset's economy

Dorset has a thriving economy and world-class environment with both established and growing industry expertise. To remain resilient and improve prosperity for all, we must embrace and build upon our economic, natural and cultural strengths.



- Bournemouth International Airport**
- Port of Poole Portland Port**
- 2 universities
1 university college
3 further education colleges
- Jurassic Coast UNESCO World Heritage Site**
- Area of Outstanding Natural Beauty**
- 6 major business parks

*Gross value added

We recognise that Dorset's ageing population is a challenge and welcome the opportunity to develop this as a strength

UK's oldest population & lowest proportion of under 50s

Dependency ratio of 1 (one person working for every pensioner) by 2040

Half current workforce may need replacing in the next 15 years

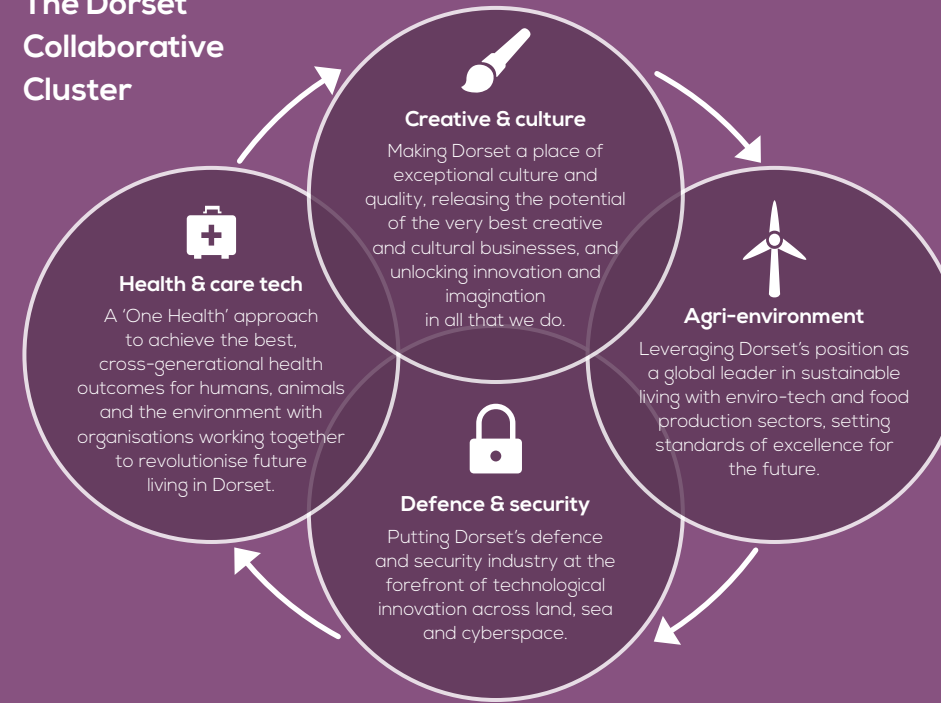
OUR AMBITION

Dorset: Living better, performing better and naturally collaborative

By 2030, we will increase the value of our annual economy by over £1bn and achieve carbon neutrality.

We will achieve this ambition by developing the Dorset Collaborative Cluster – building on the unique strengths of four existing industries and unlocking their further growth. We will encourage more collaboration across new ideas and innovation, shared skills and training, access to increased investment and reaching new global markets and, by building our world-class reputation in these clusters, improve our attractiveness as a place to invest, grow business and have great careers.

The Dorset Collaborative Cluster



This work will be underpinned by a strong and productive supply chain, including advanced manufacturing & engineering and professional & financial services, and an effective cutting-edge digital infrastructure.

Supported by a place that stimulates changing cultures...

- Adopting new ways of living and working to tackle **climate change** head-on
- Testing innovative solutions to achieve a **way to age** that's fit for the 21st century
- Creating a programme of **cultural excellence** enhancing natural, personal and built cultural assets.

...and is future ready

- Attracting, retaining and growing **talent** at all levels and ages
- Cultivating our business-led **collaborative cluster** through investment and support
- Investing in **smart places** & digital infrastructure.

The government's Industrial Strategy commits to creating an economy that boosts productivity and earning power across the UK by focusing on five foundations. These align well with Dorset LIS's planned activities that will achieve our ambition of improving economic prosperity and carbon neutrality through:

Ideas	People	Infrastructure	Business Environment	Place
<ul style="list-style-type: none"> • Building on and investing in research strengths in the 'Dorset Collaborative Cluster' and its supply chain • Developing 'test-bed' applications in areas such as health and the environment • Increasing innovation activity across all businesses (in process, products & services), research institutions and public sector service providers. 	<ul style="list-style-type: none"> • Delivering demand-led skills and education programmes as part of the Dorset Collaborative Cluster and replacement labour demand in priority skills such as IT, professional, technical, STEAM* and health • Unlocking talent and ambition across our local communities to support valued economic activity • Attracting new talent to Dorset – as the natural place to excel. 	<ul style="list-style-type: none"> • Prioritising 'smart' digital infrastructure and renewable energy resilience • Delivering one strategic sustainable transport plan for Dorset • Supporting the growth of natural capital – releasing the economic value of our environment. 	<ul style="list-style-type: none"> • Unlocking productivity opportunities for businesses of all sizes who have growth potential • Enhancing rural productivity • Increasing access to new global markets. 	<ul style="list-style-type: none"> • Spreading the benefits of projected growth to disadvantaged individuals and communities – achieving better living for all • Supporting 21st century coastal communities and cultural hubs with integrated regional centres • Identifying strategic growth areas with sustainable economies based on clean growth and creating community-led places that promote health, happiness and wellbeing.

*Science, Technology, Engineering, Arts & Maths

BY 2030

Dorset's emerging Local Industrial Strategy targets:

Current	2030 Target	What
£2.5bn	£1bn	Reduce Dorset's productivity output gap
6%	3%	Halve the wage gap between Dorset and the UK
6%	4%	Reduce the number of 50-64 year olds with no formal qualifications
25	20	Reduce the number of areas in Dorset LEP region considered to be in the 20% most deprived
20%	30%	Increase the number of businesses undertaking R&D (research & development)

We're also aiming for Dorset:

- To exceed national productivity growth rates (per worker per hour) by an average of 0.8% per year to 2030
- To grow Dorset's business stock by 2.5% per year to 2030
- To increase business investment in research & innovation by 2.5% per year to 2030
- To be a zero carbon county by 2030.

