

# Dorset Careers Live

## An Introduction to Allied Healthcare Professions



@DorsetLEP  
@CareerEnt  
@DorsetCEC

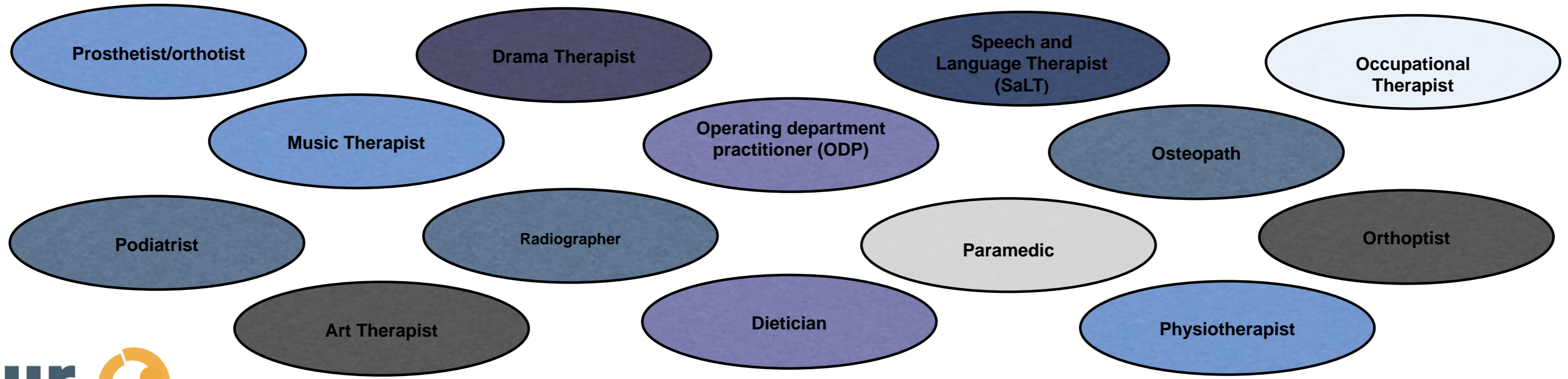
# Allied Health Professions, NHS

---

Hilary Hall



# Introduction to Allied Health Professions



# Who are AHP's



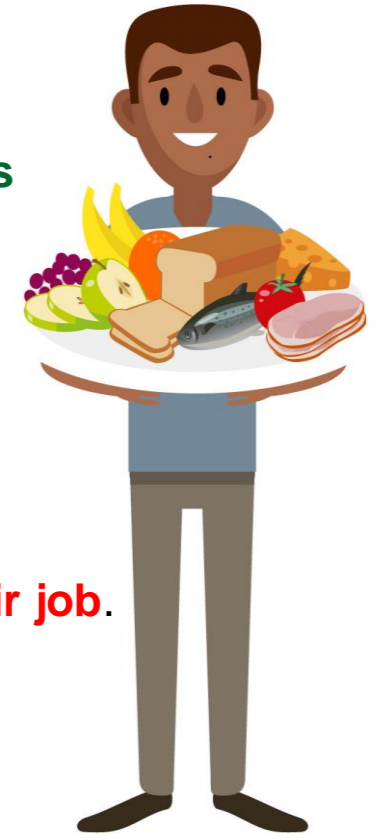
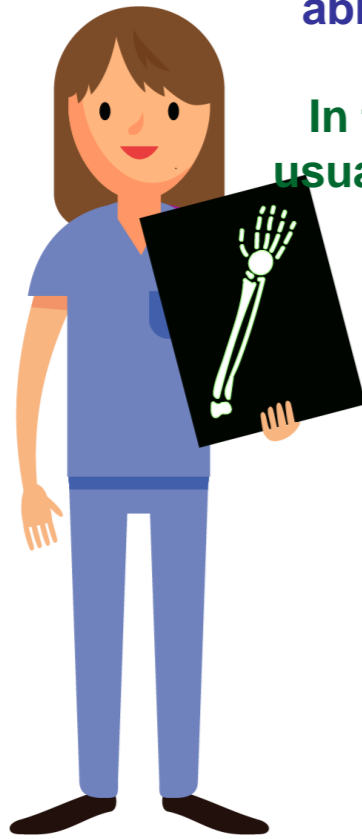
Allied health professionals (AHPs) provide treatment and help rehabilitate adults and children who are ill, have disabilities or special needs, to live life as fully as possible. They work across a wide range of different settings including the community, people's homes and schools, as well as hospitals

Although they frequently work alongside doctors, nurses and other healthcare professionals, AHPs are making independent assessments and decisions about treatment. As an AHP, it will be important that you can work well as part of a team and be able to make your own decisions based on the training and specialist expertise you have acquired.

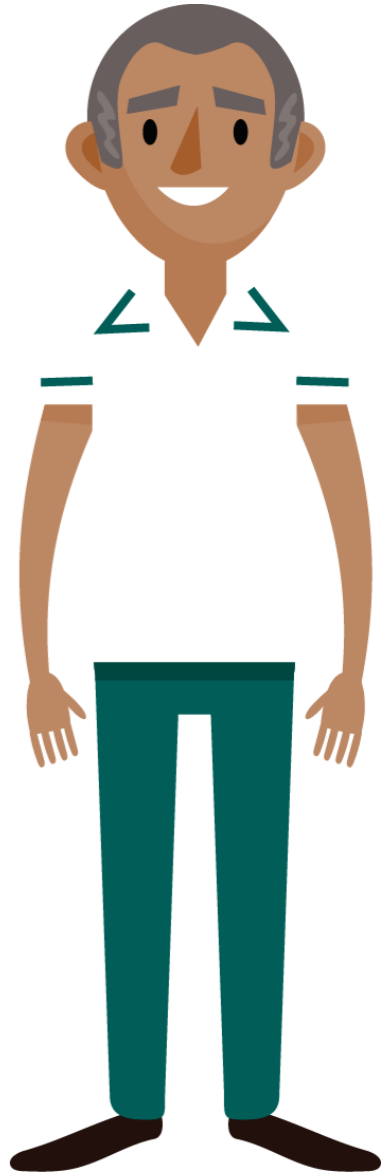
In the frontline of healthcare, all the allied health professions involve working directly with patients, usually one-to-one, but sometimes with groups of people who share similar health problems or issues

The allied health professions are a family of specialist roles who use their knowledge and skills to help patients live the fullest lives possible. They work directly with patients, so they can see the difference they make every day.

Each of the allied health professions brings specialist knowledge and skills that are unique to their job.



# Characteristics and Qualities of an AHP





# Reach for the stars with your Allied Health Profession (AHP) career!

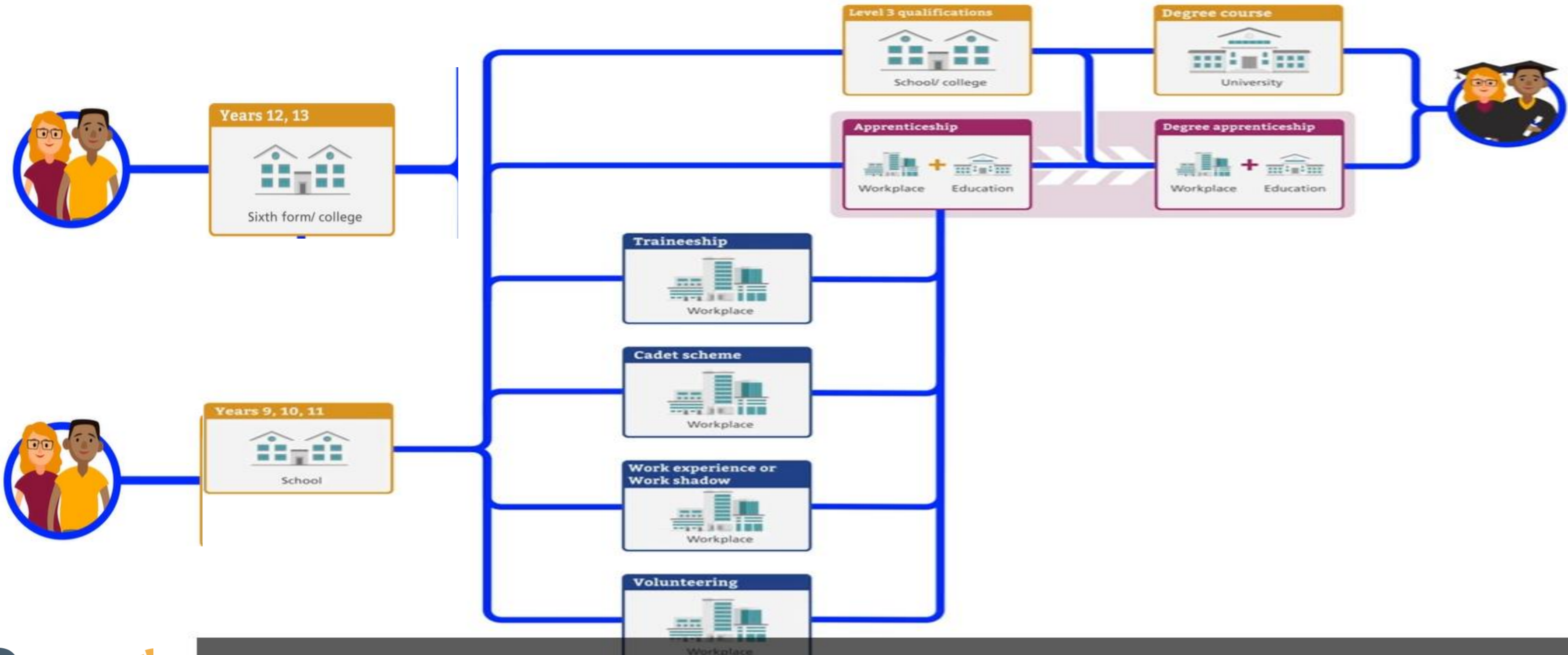


# Our Dorset

WORKFORCE



# How do I become an AHP ?



## Routes in....

### University..

The training for each of these professions involves going to university to do an approved programme. For some careers, only full-time courses are available, but for others there may be part-time routes too.

To view all courses please visit

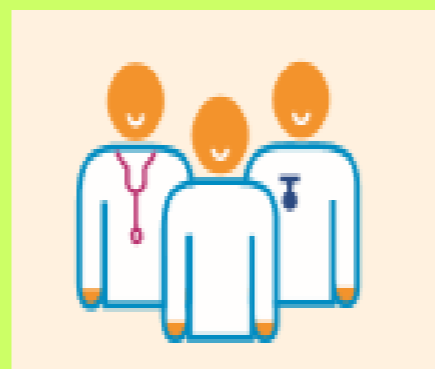
<https://www.healthcareers.nhs.uk/career-planning/course-finder>



### Apprenticeships..

Apprenticeships into some AHPs are available and more are being developed too. To find out more about any of the apprenticeship opportunities to become an AHP please visit

<https://haso.skillsforhealth.org.uk/?s=AHP&vl=all&sec=all>



### Support Roles..

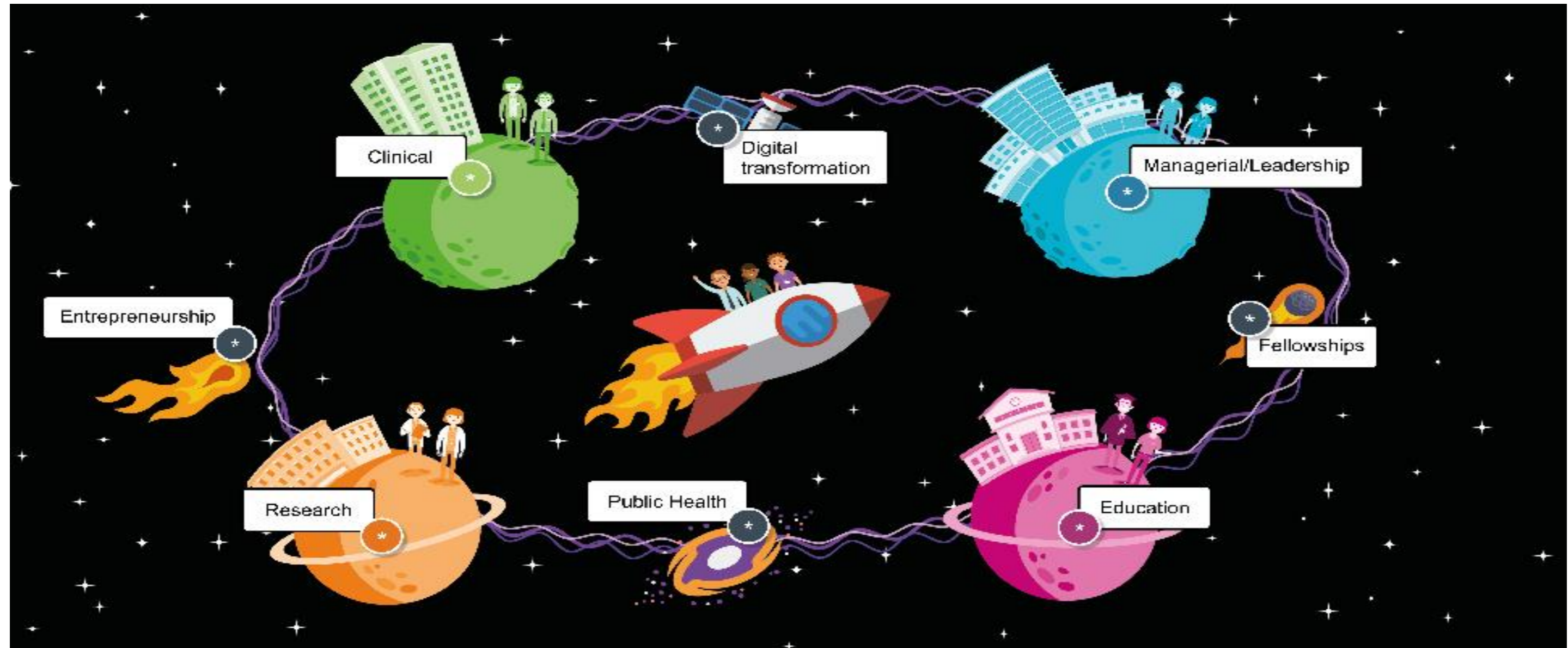
Across most of the allied health professions there are a range of assistant roles that play an important part in providing treatment to patients. There are no set academic requirements but these roles can act as a springboard for further career development and eventual professional qualification. To search AHP jobs in Dorset please Visit

[https://joinourdorset.nhs.uk/vacancies/?text=&order=post\\_date&group%5B%5D=Allied+Health+Professionals](https://joinourdorset.nhs.uk/vacancies/?text=&order=post_date&group%5B%5D=Allied+Health+Professionals)





**Where Next .....? Options are endless .....**



**.....eight core areas that you could consider to develop your career, all whilst continuing your clinical practice**

**And Now .....**

**Today's Focus and talks from**

**Charlotte, Therapeutic Radiographer from Poole Hospital**

**Vicky, Podiatrist from Dorset Healthcare**

**Emma, Dietitian from Dorset County Hospital**

**Julie, Orthoptist from RBCH**

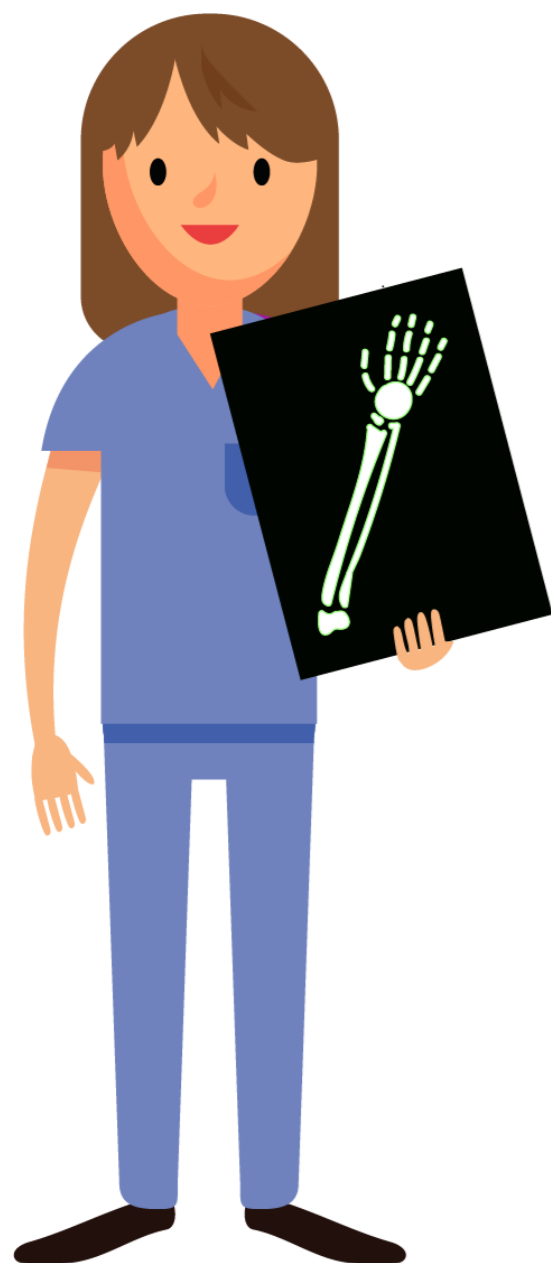
# Therapeutic Radiography

---

Charlotte Caldecott

The background features a large, abstract graphic design. It consists of several overlapping shapes in two colors: a teal color and a golden-orange color. The shapes include large circles, semi-circles, and irregular curved forms that create a sense of depth and movement. The teal shapes are layered behind the orange ones, and they overlap each other, creating a complex, organic pattern.

# Who is a Therapeutic Radiographer ?



- Treats and cares for people with cancer, offering support while using highly advanced technology to target and destroy cancer cells with radiation. You will work to high levels of accuracy to help ensure the patient's tumour or cancer receives exactly the right dose of radiation, at the same time as ensuring the surrounding normal tissues receive the lowest possible dose.
- The treatment itself involves scanning patients, planning dosages with the help of complex software, and using highly advanced equipment to deliver the treatment. It's a therapeutic radiographer's job to make sure the right amount of radiation hits the target area (usually a tumour) – and as little as possible hits the patient's healthy cells
- Helping cancer patients along their journey from the initial referral clinic, where they give pre-treatment information, through the planning process, treatment and eventually post-treatment review
- The difference you make to your patients' lives is one of the most exciting things about being a therapeutic radiographer. As well as seeing different patients and conditions you'll also have the opportunity to work in a multi-disciplinary team working closely with doctors, nurses, medical physicists and engineers in an oncology team. You may supervise the work of radiography assistants

## facts and figures

2,575 therapeutic radiographers work for the NHS.

A newly qualified therapeutic radiographer will start on a salary of £24,214

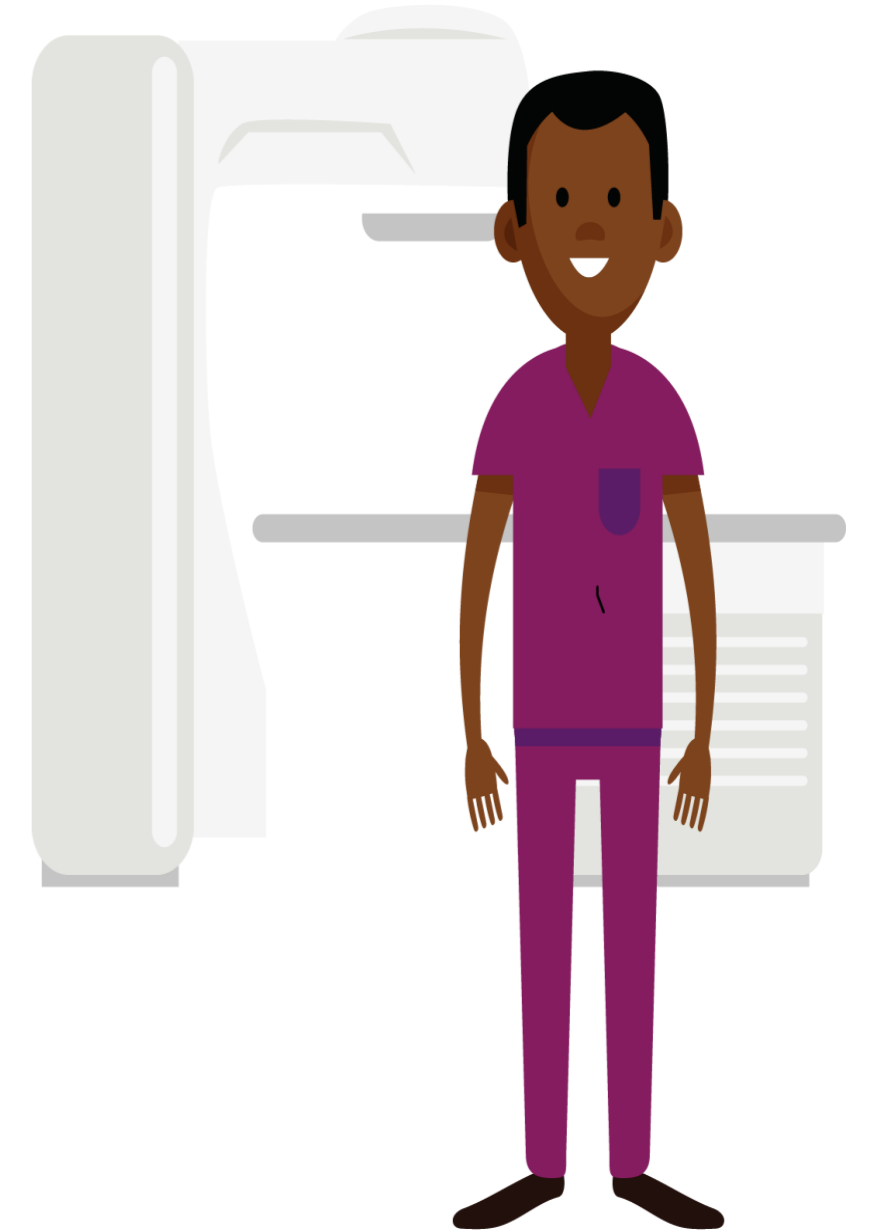
34,543 radiographers were registered with the Health and Care Professions Council (HCPC) in April 2019. This figure includes therapeutic and diagnostic radiographers.



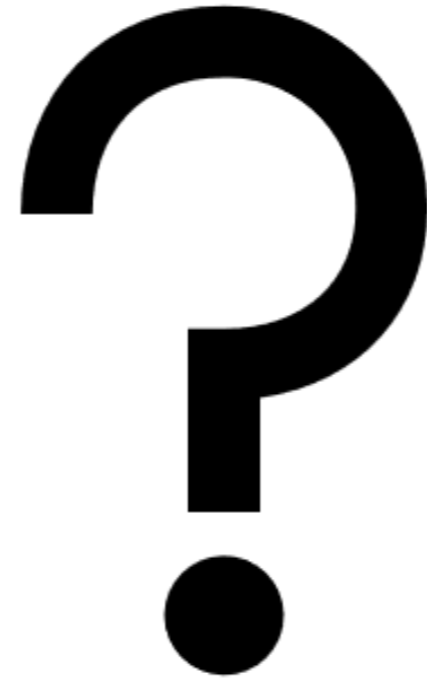


# Personal Characteristics and skills of a Therapeutic Radiographer..

- ✓ Safety Conscious
- ✓ Interested in technology
- ✓ Able to understand and follow instructions exactly
- ✓ Patient and understanding
  
- ✓ Ability to reassure patients
- ✓ Ability to explain procedures
- ✓ Good organisation
- ✓ Good communication skills
- ✓ Good observation skills
- ✓ Ability to keep up to date and learn new skills



**My Story .....**



# How to become a Therapeutic Radiographer ....

To become a therapeutic radiographer you'll need to train and study for an undergraduate degree or postgraduate diploma. Entry requirements vary depending on where you'd like to study.

## University

There are currently 20 approved courses in therapeutic radiography across the UK. (see map)  
Degree courses take three or four years full time, or up to six years part time. There are also some postgraduate programmes that take two years.  
Courses cover anatomy, physiology and physics as well communication, patient care, ethics and the practice and science of imaging.  
Courses differ but all involve a lot of practical work with patients.

## Entry requirements

To get onto a therapeutic radiography degree course you usually need two or three A levels including physics, chemistry or biology/human biology, along with at least five GCSEs (grades A-C), including English language, maths and science

Or you could have alternative qualifications, including:  
BTEC, HND or HNC which includes science  
relevant NVQ  
science-based access course



## Degree Apprenticeship ....



- ✓ An Apprenticeship involves working and studying at degree level at the same time.
- ✓ Apprenticeships combines work with learning the necessary skills on the job while you study for your qualification.
- ✓ A degree standard apprenticeship in therapeutic radiography has been approved for delivery. To get onto a degree apprenticeship, you will need to apply for an apprentice position with a health care provider.
- ✓ If you secure an apprenticeship, you'll be paid while you are working and training
- ✓ You are likely to need at least two (usually three) A-levels or equivalent qualifications at level 3, plus supporting GCSEs. Contact universities and employers directly to find out whether qualifications equivalent to A-levels or GCSEs are acceptable.
- ✓ Entry is competitive, so aim for as high grades as possible. Courses often specify preferred or essential subjects, such as at least one science subject, but this varies from one allied health profession to another and even between courses for the same subject. Universities and employers offering apprenticeships will usually expect you to attend an interview.
- ✓ There's often tough competition for apprenticeship places. In your application and interview you need to show that you are committed, aware of your responsibilities and able to cope with the work and study.
- ✓ Once you've successfully completed a programme approved by the HCPC, you are then eligible to apply for registration with the HCPC. Once registered as a practitioner, you'll be required to retain your name on the register by keeping your knowledge and skills up to date and paying an annual retention fee.



# Alternative roles and routes in ...

## Radiography assistants and imaging support workers

Radiography assistants and imaging support workers help radiographers diagnose and treat patients.

You can get into this job through:

a college course

You may find it useful when applying for jobs if you've got a college qualification, for example:

Level 2 Diploma in Healthcare Support Services

Level 2 Certificate in Health and Social Care

Level 3 Diploma in Healthcare Support

### An apprenticeship

You'll receive at least the National Minimum Wage (£3.90 an hour) for an apprenticeship but many NHS employers pay more.

You'll usually need:

2 or more GCSEs at grades 9 to 3 (A\* to D), or equivalent, for a level 2 course

4 or 5 GCSEs at grades 9 to 4 (A\* to C), or equivalent, for a level 3 course

### Applying directly

Employers often ask for relevant work experience. Even where this is not specified, it would be an advantage if you have worked in health or social care, either in paid employment or voluntary

There are no set entry requirements for radiography assistants and imaging support workers. Employers expect good numeracy, literacy and IT skills. They may ask for GCSEs or equivalent. Employers may ask for a healthcare qualification, such as BTEC or NVQ.



## After qualifying ...



- Most therapeutic radiographers work in the NHS.
- A newly qualified therapeutic radiographer will start on a salary of £24,907
- You'll be based in a hospital, working with the oncology team and support services.
- As you continue your career in therapeutic radiography, you'll have the opportunity to specialise in areas that interest you. That could mean developing your clinical skills, practising at an advanced level in new roles, working with specific technologies, getting involved with research, leadership, management or education.
- You'll develop strong communication skills; caring for patients is at the heart of being a therapeutic radiographer





# Careers in Podiatry

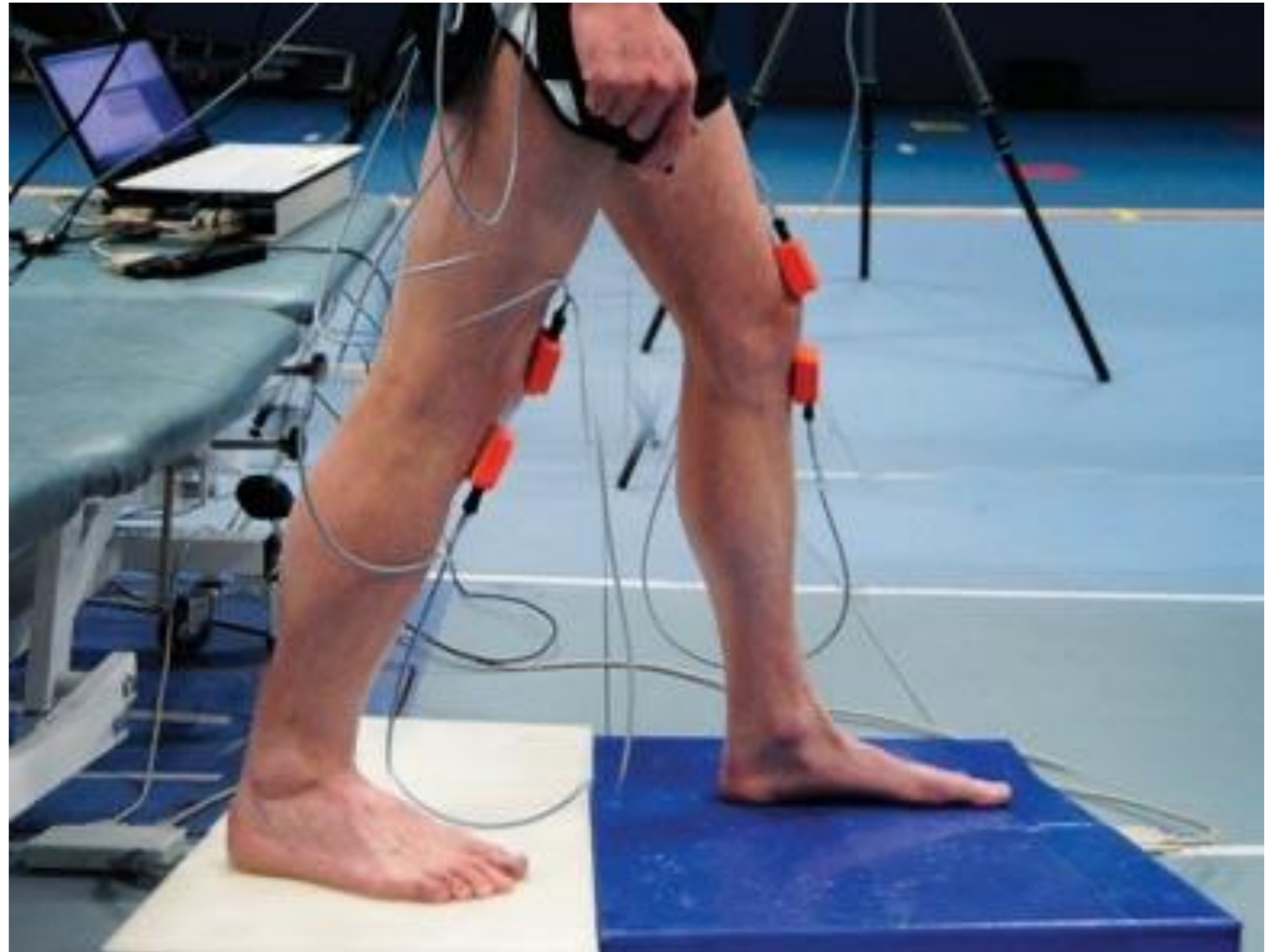
Vicky Bishop  
Advanced Podiatrist -  
Diabetes

---



# **PODIATRY... WHAT'S IT ALL ABOUT?**

**Podiatrists provide  
preventative care, diagnosis  
and treatment of a range of  
problems affecting the feet,  
ankles and legs.**





# QUALIFYING AS A PODIATRIST

To register with the Health and Care Professions Council (HCPC) and practice as a Podiatrist in the UK, you have to complete a HCPC recognised Podiatry Degree OR a Podiatry Apprenticeship



## Development and Progression

- NHS employee working as a hospital or community clinician or in a management role
- Advanced Practitioner working within a specialist role
- Business owner running a private practice
- Medical sales representative
- Lecturer or researcher working in a university





- Self employed locum working in private practices and private hospitals
- Clinician working overseas
- Representative or technician working with one of the associated trade organisations
- NHS Consultant Podiatrist
- Specialist practitioner working in podiatric surgery



Shall we  
talk money?

**\*NHS**

\* figures were collated  
in January 2020

- Podiatrist (band 5) **£24,214 to £30,112**
- Specialist podiatrist (band 6)  
**£30,401 to £37,267**
- Specialist Registrar in Podiatric Surgery  
or Consultant Podiatrist in Podiatric  
Medicine (band 8 a – d)  
**£44,606 to £86,687**
- Consultant Podiatric Surgeon (band 9)  
**£89,537 to £103,860**



# PRIVATE PRACTICE

- Working in a private practice you can earn around **£20,000 – £50,000** per annum
- Owning a successful single chair private practice you can earn around **£50,000 – £250,000**
- Owning a successful multi-chair private practice you can earn around **£100,000 – £500,000**
- Owning a successful multi-site private practice you can earn around **£150,000 – £1,000,000+**

**PODIATRY IS A BRILLIANT CAREER IF YOU'RE INTERESTED IN SCIENCE, BIOLOGY, CHEMISTRY OR MEDICINE.**

**Especially if you are:**

**Caring**

**Self reliant but also a good team player**

**Understanding**

**Passionate about helping others**

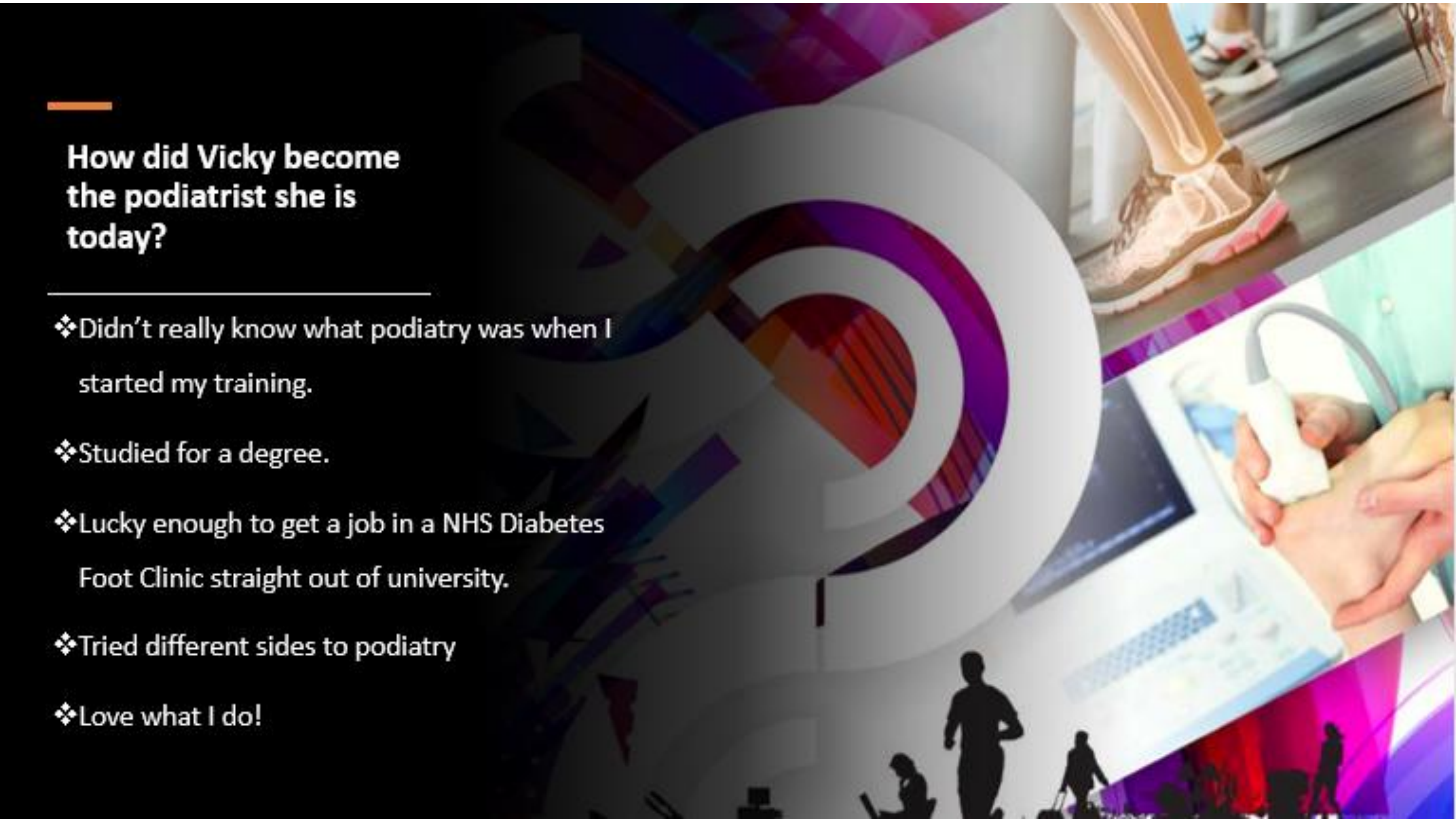
**Analytical**

**Curious**

**A good communicator**







## How did Vicky become the podiatrist she is today?

- ❖ Didn't really know what podiatry was when I started my training.
- ❖ Studied for a degree.
- ❖ Lucky enough to get a job in a NHS Diabetes Foot Clinic straight out of university.
- ❖ Tried different sides to podiatry
- ❖ Love what I do!





For Further  
Information

[www.careersinpodiatry.com](http://www.careersinpodiatry.com)

[www.scpod.org](http://www.scpod.org)

[www.thisispodiatry.com](http://www.thisispodiatry.com)





INTEGRITY | RESPECT | TEAMWORK | EXCELLENCE



**Dorset County Hospital**  
NHS Foundation Trust



# Dietetics

**Emma Dunn**  
Diabetes Dietitian

West Dorset Integrated Acute &  
Community Dietetics Service

**Our**   
**Dorset**

WORKFORCE

*Outstanding care for people in ways which matter to them*

# What is a dietitian?

‘Dietitians are qualified and regulated health professionals that assess, diagnose and treat dietary and nutritional problems at an individual and wider public-health level.’



(British dietetic association, 2020)

# Becoming a dietitian

Two types of full time university programmes:

- Undergraduate

BSc (Hons) degree - 3 or 4 years.

- Postgraduate

Postgraduate Diploma (PgDip) or Masters (MSc) qualification – 2 years.

**There is a legal requirement for anyone using the title dietitian to be registered with the Health and Care Professions Council (HCPC).**

(BDA, 2020)



Dietitians work in public health. Improving diet and nutrition for everyone.



Dietitians work with industry. Influencing the food and drink we buy from shops and restaurants.



Dietitians work with top athletes. Helping them perform better by adapting their diet to achieve their goals.



**Dietitians Week**

#whatdietitiansdo

**Dietitians Week**

#whatdietitiansdo

**Dietitians Week**

#whatdietitiansdo

Dietitians work in the NHS. In hospitals, in GP surgeries & visiting patients at home.



Dietitians work in research. Discovering new things about food and diet & teaching the next generation.



Dietitians work in the media. Sorting fact from fiction and improving everyone's understanding of nutrition science.



**Dietitians Week**

#whatdietitiansdo

**Dietitians Week**

#whatdietitiansdo

**Dietitians Week**

#whatdietitiansdo

**Our Dorset**



**WORKFORCE**

# #Whatdietitiansdo

(BDA, 2020)





INTEGRITY | RESPECT | TEAMWORK | EXCELLENCE



Dorset County Hospital  
NHS Foundation Trust

# *A dietitian in practice ... a little about me!*

**Our**   
**Dorset**

WORKFORCE

*Outstanding care for people in ways which matter to them*



INTEGRITY | RESPECT | TEAMWORK | EXCELLENCE



Dorset County Hospital  
NHS Foundation Trust

## More information

- [www.bda.uk.com](http://www.bda.uk.com)



and on Twitter, Facebook, Instagram

- [www.hcpc-uk.org](http://www.hcpc-uk.org)

)

**Our**   
**Dorset**

WORKFORCE

*Outstanding care for people in ways which matter to them*

# Orthoptics

---

Julie Dowdney



**BIOS** | BRITISH AND IRISH  
ORTHOPTIC SOCIETY

# Where do Orthoptists work?

NHS - in hospitals or community

Alongside Ophthalmologists and Optometrists

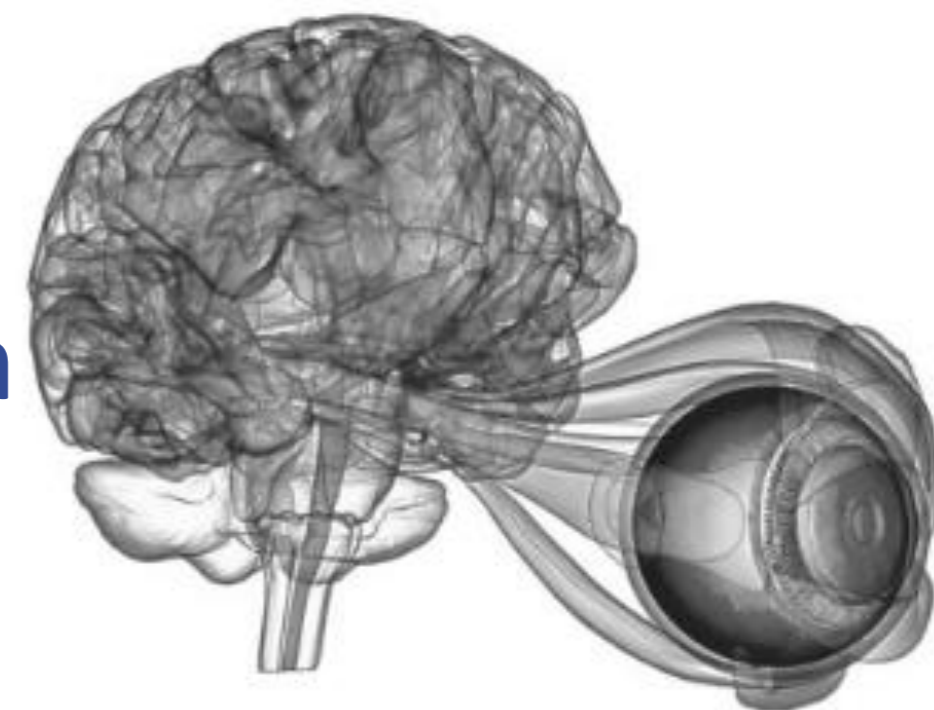
Vision screening for reception age children (in schools)

Special schools



# What is an Orthoptist?

- An expert in diagnosing and treating defects in eye movement and problems with how the eyes work together
- Assess muscle coordination of the eyes
- Assess the development and monitoring of vision
- Assess the nerves that control eye movement



# Eye & Vision Specialists



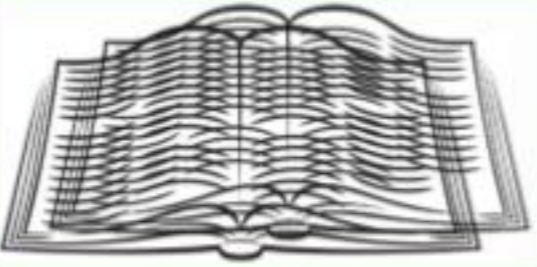





Highly skilled in assessing what children can see

THE specialists in how the eyes move and work together



Experts in understanding neurological defects affecting how we see

## Who should see an Orthoptist?

If you experience:	If you see:
<p>Double vision</p> 	<p>Strabismus (eye turn)</p> 
<p>Blurred vision – not corrected by glasses</p> 	<p>Ptosis (droopy eyelid)</p> 
<p>Visual field loss</p> 	<p>Nystagmus (continuous uncontrolled eye movements)</p> 

For an appointment you can ask your GP, health visitor, optometrist or hospital consultant for a referral to the Orthoptist at the eye (ophthalmology) clinic.



**BIOS** | BRITISH AND IRISH  
ORTHOPTIC SOCIETY



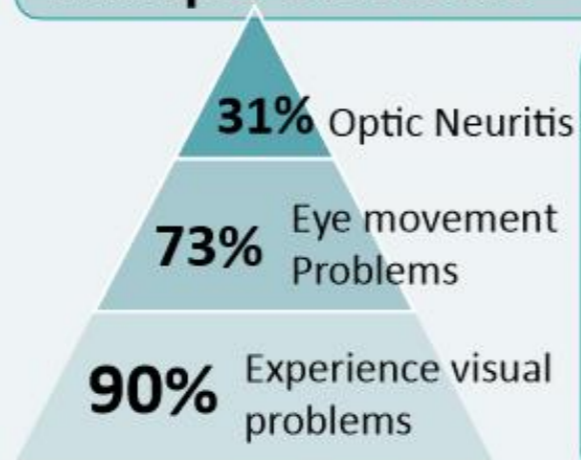
## Eye Care in Neurological Conditions

People with neurological conditions experience a high incidence of **visual problems**.

**Orthoptists** can assess, diagnose, treat and monitor visual signs as an important part of clinical care.



### Visual Problems in Multiple Sclerosis



### Brain Tumors

frequently affect vision & eye movements.

e.g. Up to **90%** of those with tumours of the optic nerve and pituitary gland.

Around **80%** of people with **Parkinson's Disease** have signs of ocular dysfunction.



### Common Visual Problems:

Reduced **vision** & changes to colour/ contrast



**Visual field loss**

Abnormal eye movements & **double vision**



### How can an Orthoptist help?

**MEASURE** defects & **MONITOR** Changes



Offer **ADVICE/ TEACH** compensation techniques

**TREAT** symptoms/ **CORRECT** defects with prisms/lenses/



**REFER** for surgery where appropriate





**BIOS** | BRITISH AND IRISH  
ORTHOPTIC SOCIETY

## Common eye problems in children with special educational needs



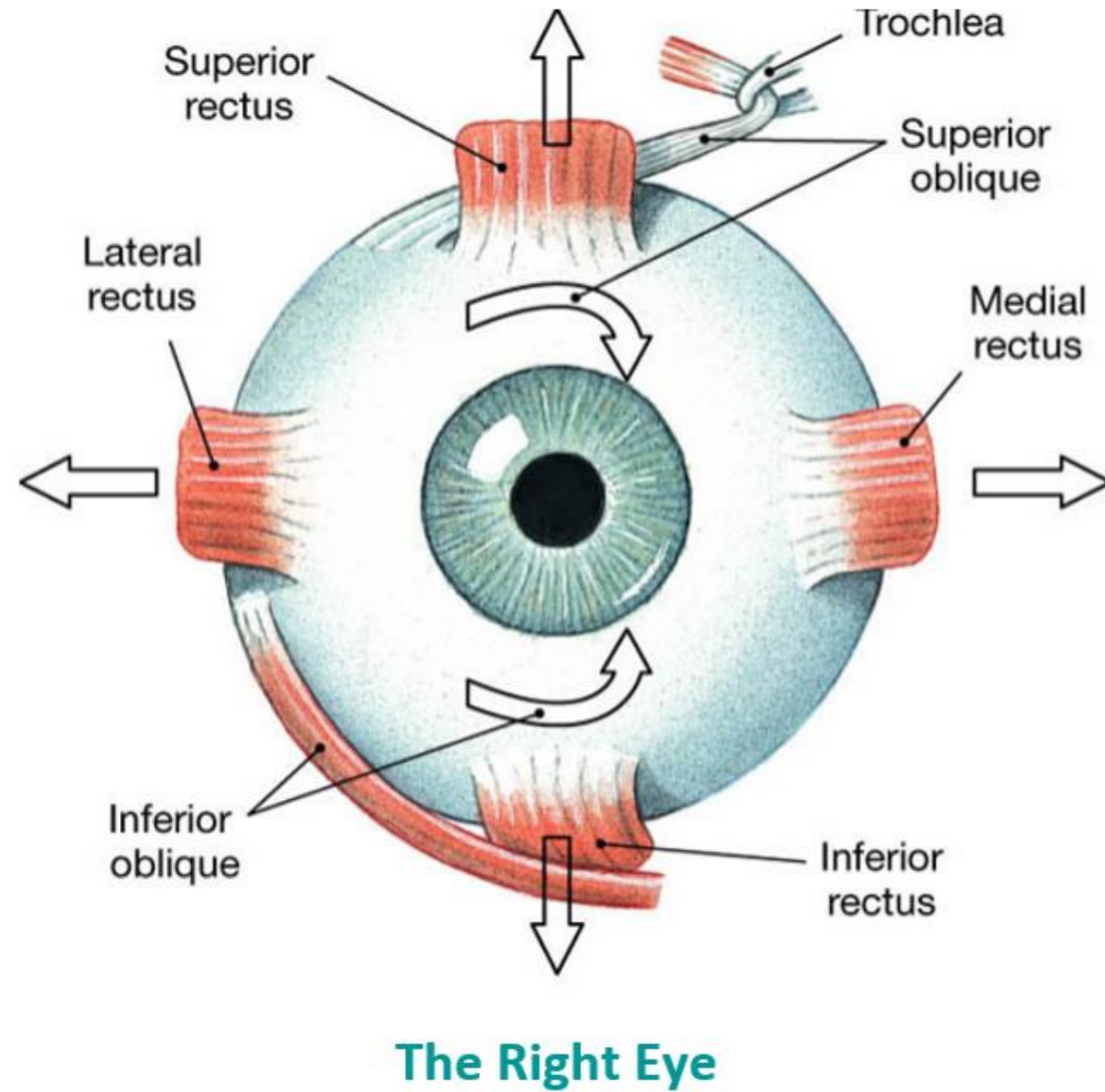
- 👁️ Strabismus - misalignment of the eyes
- 👁️ Amblyopia - disorder preventing normal development
- 👁️ Cerebral visual impairment - brain problem affecting how children use their vision and interpret what they see
- 👁️ Eye movement disorders - conditions such as nystagmus (constant moving eyes) can significantly impair visual function

**Orthoptists assess, diagnose and treat these and other conditions**

**Our**   
**Dorset**

**WORKFORCE**

# How Do Our Eyes Move?

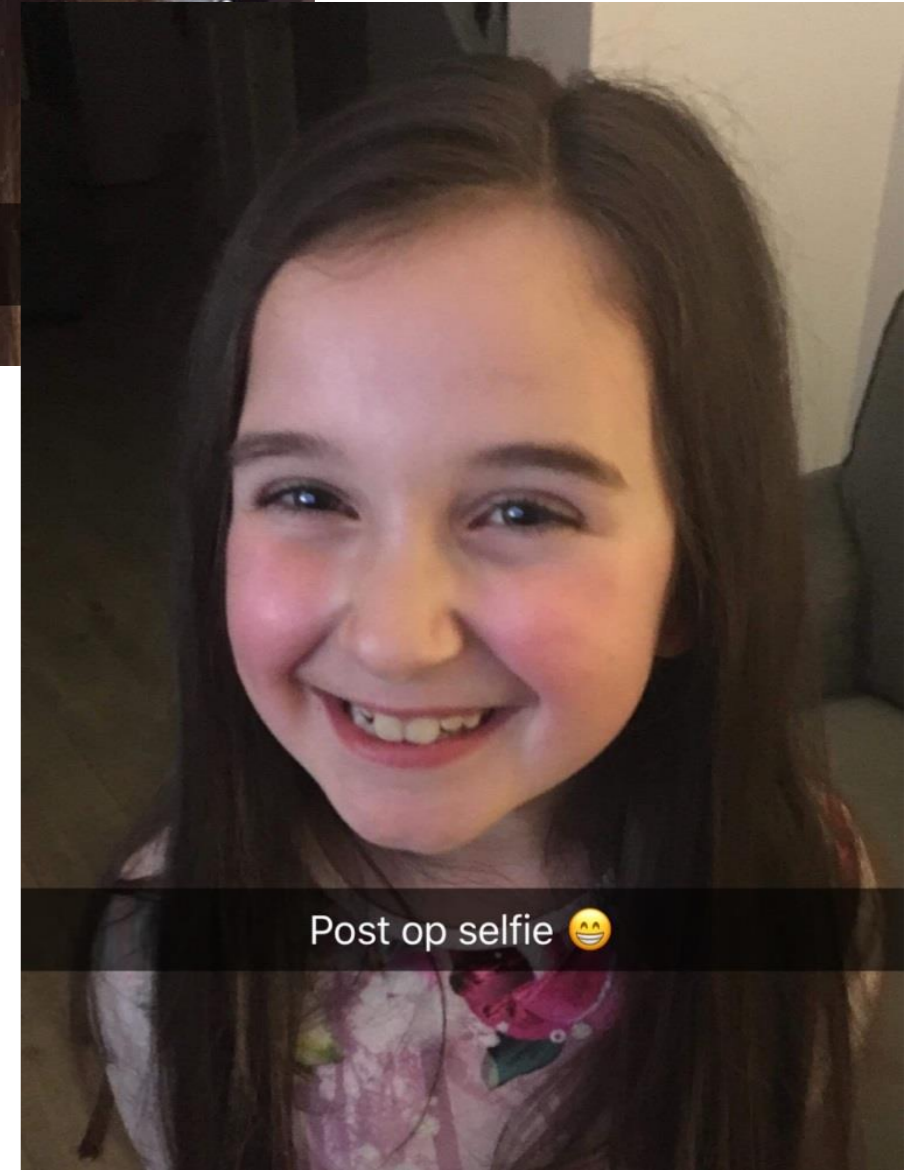
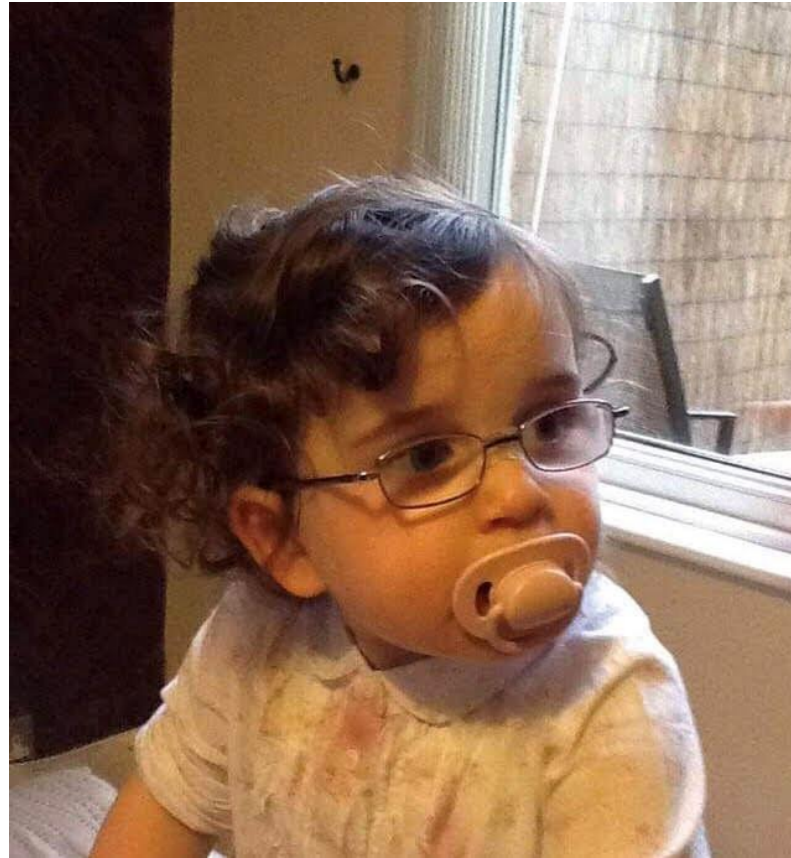


Muscle	Which way it pulls
<b>Lateral rectus</b>	Outwards towards the ear
<b>Medial rectus</b>	Inwards towards the nose
<b>Superior rectus</b>	Lifts up
<b>Inferior rectus</b>	Pulls down
<b>Superior oblique</b>	Twists inwards and pulls down
<b>Inferior oblique</b>	Twists outwards and pulls up











# Fancy a career in Healthcare?

Ever thought about Orthoptics?



**BIOS** | BRITISH AND IRISH  
ORTHOPTIC SOCIETY

3 year Degree course runs at Sheffield and  
Liverpool Universities  
4 year course in Glasgow  
Entry requirements usually BBB at A level

**Our**   
**Dorset**

**WORKFORCE**

# Online / Social Media



BIOS Website [www.orthoptics.org.uk](http://www.orthoptics.org.uk)

Twitter [@FollowBIOS](https://twitter.com/FollowBIOS)

Facebook [@BritishIrishOrthoptics](https://www.facebook.com/BritishIrishOrthoptics)

Instagram [@orthoptics.bios](https://www.instagram.com/orthoptics.bios)



A handwritten note on a piece of aged, yellowish paper. At the top center is a simple black smiley face with two dots for eyes and a curved line for a mouth. Below the smiley face, the words "Thank you!" are written in a cursive, black ink. The exclamation point is at the end of the word "you".

There are loads of great resources out there about Allied Health Professions.

Please take a look at

[www.iseethedifference.co.uk](http://www.iseethedifference.co.uk)

[www.healthcareers.nhs.uk/](http://www.healthcareers.nhs.uk/)

<https://www.thewowshow.org/>

If you have any further questions please contact

<https://joinourdorset.nhs.uk/contact/>

# Dorset Careers Live

## Questions?



[www.dorsetlep.co.uk/health-and-social-care-sector-skills](http://www.dorsetlep.co.uk/health-and-social-care-sector-skills)



@DorsetLEP  
@CareerEnt  
@DorsetCEC