



**BIG Programme –  
FWP Corridor  
(Wallisdown West)**

**End of Project Report**

**June 2021**

## **Bournemouth International Growth (BIG) Programme Summary**

The BIG Programme is a major economic growth plan focused on improving connectivity, easing congestion, protecting existing jobs and creating new jobs in and around Bournemouth Airport and Wessex Fields.

£40.5m has been secured by Dorset Local Enterprise Partnership as part of the Dorset Growth Deal to fund a series of transport and infrastructure investments along the A338, B3073 and A348 corridors aimed at facilitating better access into and around Bournemouth Airport as well as unlocking employment land at Aviation Business Park and at Wessex Fields.

### **What is the BIG programme going to do?**

From 2015 to 2021 the BIG Programme will:

- Transform accessibility to and around Bournemouth Airport and Wessex Fields through extensive transport improvements
- Release up to 60 hectares of prime, flexible employment land for high-quality new business premises at [Aviation Business Park](#) and 6 hectares at Wessex Fields
- Provide the single largest employment opportunity in the south-east Dorset conurbation with the potential to create up to 10,000 new highly skilled jobs over the next decade
- Generate up to £500 million of GVA into the area
- Deliver around 350 new homes of which up to 50 per cent are affordable
- Deliver increased broadband capacity to Bournemouth Airport and Aviation Business Park
- Develop a new approach to improve skills and employee development, better tailoring it to the needs of key business sectors (aerospace, aviation, advanced manufacturing, digital media, marine, defence and financial services)

### **Why is it needed?**

Bournemouth Airport is a significant economic asset to Dorset. Alongside the opportunity to unlock employment land at Aviation Business Park and Wessex Fields, an exciting economic growth opportunity exists for the region.

However, existing key link roads and transport networks are congested, inadequate and are acting as a barrier to growth. They are in vital need of reconstruction. In addition, poor infrastructure and lack of housing are hindering growth and need to be transformed if Bournemouth Airport, Aviation Business Park and Wessex Fields are able to reach their full economic potential.



Boosting the economy by improving roads, easing congestion and protecting and creating jobs around Bournemouth Airport and Wessex Fields. A series of bus and cycle link enhancements also form part of the transport improvements. Over £48m secured (£41.2m Local Growth Fund plus £7.1m public sector match funding).

2015 - 2021

TRANSPORT IMPROVEMENTS

1. A338 reconstruction - completed May 2016
2. Chapel Gate roundabout - completed March 2018
- 3a. Blackwater - B3073 east junction - completed May 2018
- 3a. Blackwater - A338 auxiliary lane - completed May 2019
- 3c. Blackwater - B3073 west junction - completed May 2020
4. Hurn roundabout - completed September 2018
5. Parley Cross east - outline planning application approved October 2018 for accesses and a link road; start / completion dates tbc
6. Parley Cross west - planning application anticipated; start / completion dates tbc
7. Parley Cross junction - start / completion dates tbc
8. Wessex Fields - planning application approved March 2019; link road from A338 to site boundary completed February 2021
9. Wallisdown West (part of FWP Corridor scheme) - pedestrian and cycle improvements; completion in March 2021
10. A338 widening - completed May 2019
11. Cooper Dean widening - completed May 2019

SITE IMPROVEMENT

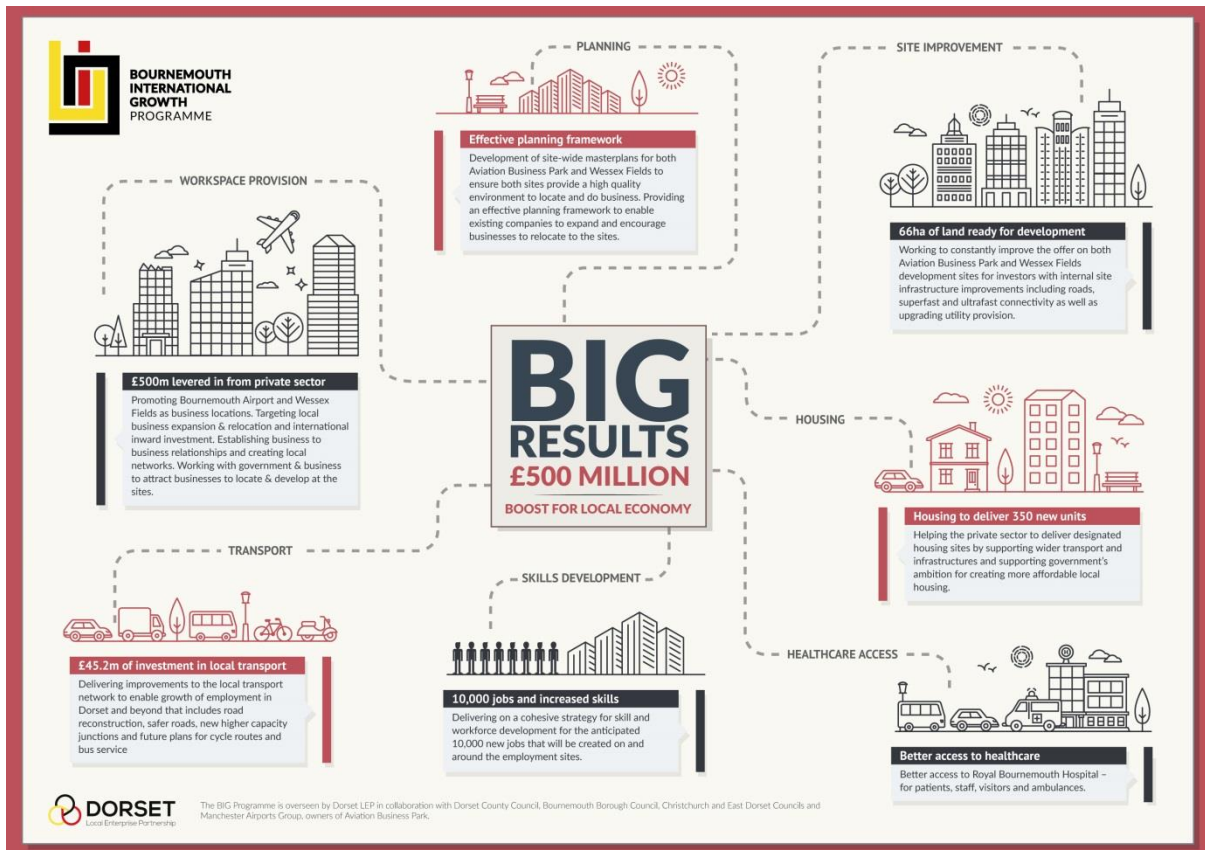
- Surrounding airport area and Aviation Business Park
- Wessex Fields - new link road serving employment area

WORKSPACE PROVISION

- Aviation Business Park - business and manufacturing land
- Wessex Fields - business and office employment land including medtech research.
- Together both areas provide potential for the creation of up to 10,000 jobs locally

HOUSING

- West Parley, residential development east of New Road - 386 homes by 2027/28 tbc
- West Parley, residential development west of New Road - planning application for 150 homes by 2025-26 tbc



## FWP / A348-A3049 Corridor Project Summary

Dorset LEP allocated £1.05 million of Growth Deal Funding, as part of an overall investment in a series of economy enhancing improvement works along the A3049 (Wallisdown Road) and A3048 (Ringwood Road). The investment, referred to as the FWP (Ferndown, Wallisdown, Poole) Corridors programme, aims to reduce congestion and improve connectivity to Bournemouth Airport, the Port of Poole, Bournemouth University and Ferndown, Bournemouth and Poole town centres.



Funding secured by Dorset LEP has been used exclusively to deliver the prioritised works on A3049 Wallisdown West and the other schemes will utilise funding allocated from Local Transport Plan (LTP) and the Transforming Cities Fund (TCF) programme.

The scheme is being delivered by BCP Council and focuses on an important connecting route between Bournemouth and Poole, the scheme will deliver pedestrian and cycle improvements along the A3049, from Mounbatten Roundabout to the Bryant Road Junction. All schemes will be completed before the end of 2023. The

The investment into the Wallisdown West area forms part of a series of local infrastructure projects. Future improvements will be delivered by BCP Council at the junction of the A348 (Ringwood Road) and B3061 (Sea View Road), as well as cycle and pedestrian improvements along the A348 Ringwood Road, between Mountbatten and Alderney roundabouts.

Together these schemes aim to reduce congestion and improve connectivity to Bournemouth Airport, the Port of Poole, Bournemouth University and Ferndown, Bournemouth and Poole town centres. They will link to, and complement wider works completed on Wallisdown Road in Spring 2020 and improvements at Boundary Roundabout Spring 2021.

Project start date	June 2019
Project construction start date	October 2020
Project completion date	March 2021

### Planned Outputs

- A scheme that provides the improvements required to create a well-connected highway network along the FWP Corridors which will reduce severance and improve journey time reliability, network resilience and safety for all transport users
- A scheme that improves accessibility between Ferndown, Wallisdown, Poole and the Strategic Road Network, as well as providing access to development opportunities along or near to the FWP Corridors



### Planned Outcomes

- Improved bus service levels, journey times and reliability.
- increased modal share of cycling for travel to work or education journeys on the A348/A3049 corridor.
- higher proportion of walking journeys made for short trips or multi modal journeys on or around the A348/A3049 corridor.

- accessibility, place and safety improvements to Wallisdown local centre that prioritises people over vehicles; and,
- improved effectiveness of the A348/A3049 as a strategic route delivering safe and improved traffic movement that acts as a key enabler of growth.

### **BIG Programme Outcomes**

The FWP schemes will contribute to the overarching outcomes of the BIG Programme. The following outcomes have been achieved since April 2015.

<b>Outcome</b>	<b>Number</b>
Jobs at Aviation Business Park	1,125
Private investment leveraged at Aviation Business Park	£143,939,000
Land Unlocked (Ha) at Aviation Business Park	6.4
Commercial floorspace created at Aviation Business Park	37,577
Land Unlocked (Ha) at Wessex Fields	6.07
Total length of resurfaced Road	13.22 km

Outcomes continue to be monitored on a quarterly basis and reported to Department for Business, Energy and Industrial Strategy until March 2025.

### **Benefits Realised to date**

- Phase 1 delivered on time and on budget.
  - New controlled crossings near Sunnymoor Road and reposition the existing crossings at Discovery Court and Canford Avenue
  - Protected cycleways and footpaths along the majority of the route with priority across side roads
  - Improved footpaths along the corridor and narrowing the side roads crossings to improve safety
  - Support bus travel with better stops, waiting areas, shelters and live passenger information points
  - Reduced speed limit to 30mph, ensuring lower vehicle speeds and create a safer environment for all road users
  - A more attractive area for residents with tree planting and landscaping.

## Finances

The table below defines the allocation received and utilised from Dorset LEP – Growth Deal funding together with a forecast of the match funded spend (local contributions) for completion of the Wallisdown West scheme (currently under construction and due to be finished by 2023).

	Indicative DLEP Funding	Match Funding	Total Funding
<b>Total Funding</b>	£1,050,000	£2,037,000 *	£3,087,000 *

\* Forecast figures (as scheme not yet complete) for Wallisdown West scheme only

Significant additional local contributions funding will be utilised to deliver the BCP Council commitments for:

- Junction improvements at Ringwood Road / B3061 Sea View Road
- Cycle/pedestrian improvements along the A348 Ringwood Road (section between Mountbatten Rbt and Alderney Rbt)

### Dorset LEP

Rosie MacNamara

rmacnamara@bournemouth.ac.uk

<http://dorsetlep.co.uk/port-of-poole/>

### BCP Council

Tim Forrester, DLEP and Capital Programme Manager

[tim.forrester@bcpcouncil.gov.uk](mailto:tim.forrester@bcpcouncil.gov.uk)

Further information is available by following the BCP Council website [link](#)