

# DORSET

*living better*





# DORSET *Living Better*

Dorset's Living Better prospectus presents an ambitious 10-year portfolio of investment opportunities across all that is best and unique about Dorset.

From our growing City Region to our globally-recognised coastal and rural landscapes, we have **untapped potential** to inspire, excite and lead in equal measure.

It's been a challenging time, but we can turn that challenge into opportunity and accelerate a better recovery for Dorset – one that reaches all our communities and puts us at **the centre of a global recovery**.

We can be at the forefront of tackling some of humanity's biggest challenges, pioneering new approaches to healthy ageing, food production and climate change.

And we can do this while protecting and enhancing our world-class environment, so we remain a premier destination to live, work, visit and learn.

06 DORSET INVESTMENT HIGHLIGHTS

08 DORSET DELIVERS

10 INVESTMENT PORTFOLIO

12 SMART


22 WELLBEING

30 NATURAL

38 LIVING

48 INVESTING IN A VISION

50 DORSET. A PLACE OF SUCCESS

 Click on links for more info

 Contacts for investment highlights

Special thanks to 3 Sided Cube, Bournemouth University, The Arts Development Company, AUB Marketing, Dorset Coast Forum and Butterfly Effect Films, RNLI / (Harrison Bates, Gavin Jones, Dave Morgan, Nathan Williams), Dorset Farmers' Market, Sam Dallimore, Dorset Wildlife Trust, Maria Clarke, Dorset LNP and Dorset LEP for allowing us to use their photography.



## CURRENT

We are building on investments made since 2015 of at least:

Living	£88m
Natural	£11m
Smart	£48m
Wellbeing	£39m

**£186m**

## FUTURE

The Dorset Investment Prospectus headlines the following investment opportunities over the next 10 years:

Living	£2.2bn
Natural	£285m
Smart	£350m
Wellbeing	£140m

**£2.975bn**

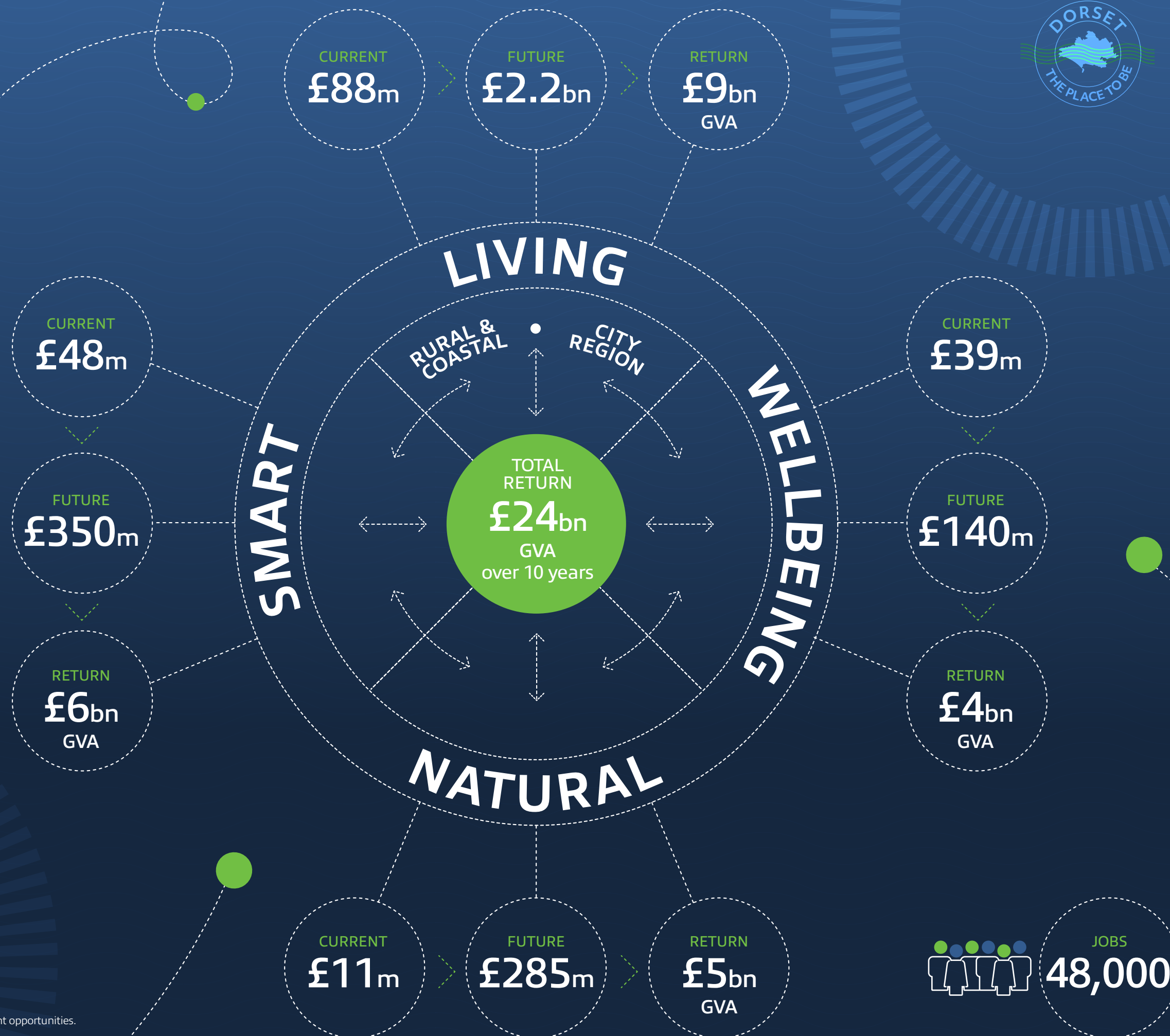
## RETURN

These deliver an estimated 10 year economic return to Dorset of:

Living	£9bn GVA
Natural	£5bn GVA
Smart	£6bn GVA
Wellbeing	£4bn GVA
New Jobs	48,000

**£24bn GVA**

Current investment figures based on Dorset LEP programmes.  
Other figures are based on an initial market test of future investment opportunities.  
We have made evidenced assumptions where required.



# DORSET INVESTMENT HIGHLIGHTS

**SOUTHERN  
GROWTH  
CORRIDOR**  
5,300 homes  
30 Ha  
employment  
space



**DESTINATION  
DORSET**  
Tourism and cultural  
opportunities  
unlocking a **25%**  
increase in staying  
visitor numbers  
and a **30%**  
increase  
in spend



**DORSET  
INNOVATION PARK  
– Defence Cluster**  
35 ha  
development  
area including  
on-site **5G**  
Accelerator



**NORTH SOUTH  
TRANSPORT  
CONNECTIVITY**  
Supporting over  
**30,000** jobs  
and **£250m**  
enhanced  
growth



**SMART CITY**  
The UK's 1st open  
innovation system  
using a full  
**5G** and **data**  
platform



**CITY REGION**  
**15,000**  
new homes  
**13,000** jobs



**AQUACULTURE  
CENTRE**  
Part of a **£1.4bn**  
annual UK market  
opportunity,  
including offshore  
development  
zones



**COASTAL  
REGENERATION**  
Over **1,000**  
new homes  
and **13 ha**  
employment  
land



**METRO-CITY  
CONNECTIVITY**  
Including  
**90 minutes**  
to central  
London



**MEDTECH  
SCIENCE PARK**  
Cutting edge 'living  
lab' and medtech  
facilities supporting  
**500** new jobs  
and our  
**One Health**  
programme.



**ACCELERATED  
ECONOMIC ZONE**  
**£1.7bn**  
growth and  
**5,600 jobs**  
in 20 years

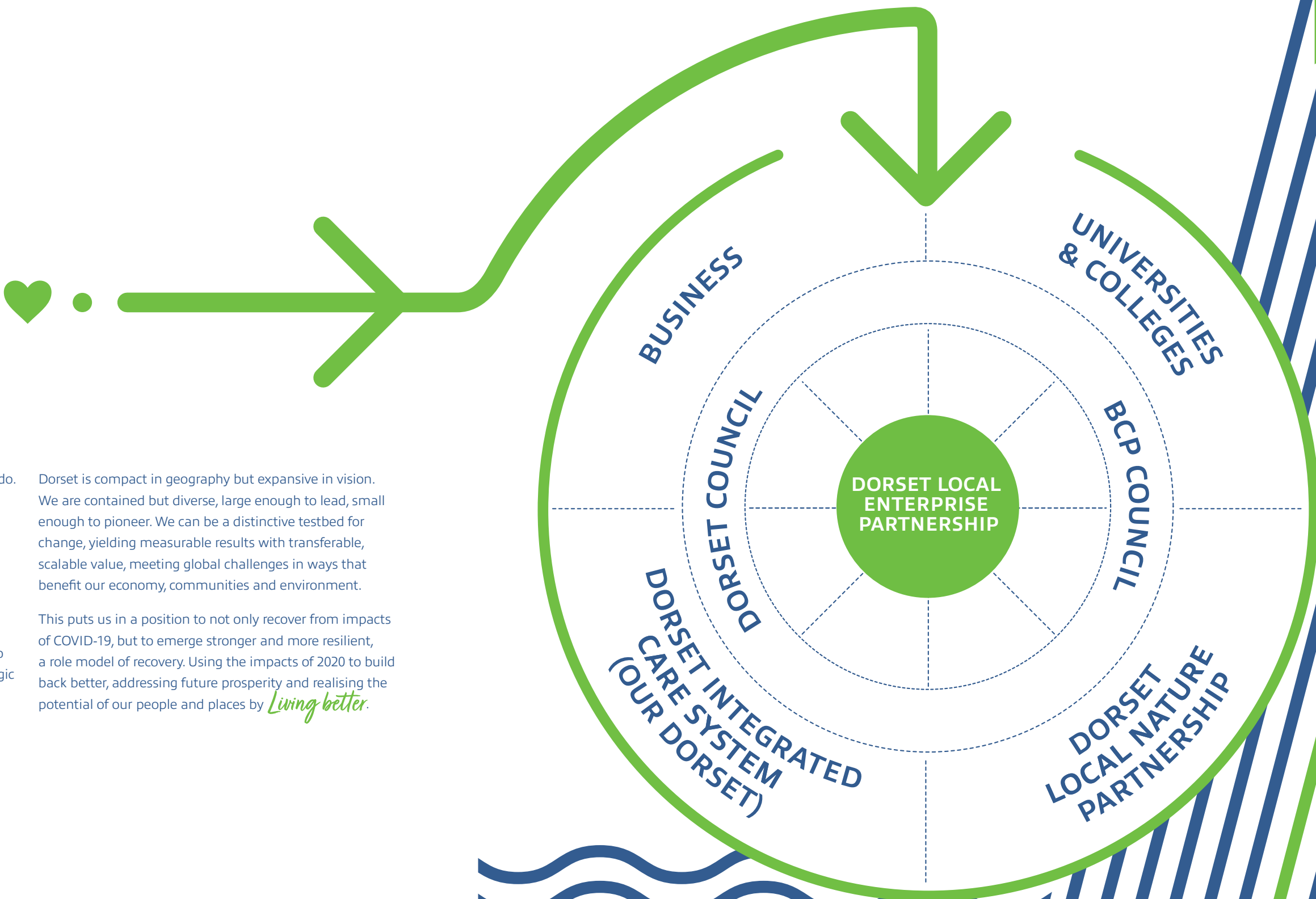


**DORSET'S  
CLEAN ENERGY  
REVOLUTION**  
**7 Megawatts**  
Powering over  
**12k homes**





# DORSET DELIVERS



Dorset works by taking a whole area approach to what we do. When you sit down with us, you sit down with Dorset.

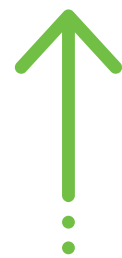
We have a streamlined governance structure that includes a single Local Enterprise Partnership, two unitary local authorities, and one of the leading integrated care systems in England, called Our Dorset.

Combined with a collaborative and engaged business community and three world-class universities committed to working in the region, these efficient structures drive strategic leadership, an agile response and highly effective delivery.

Dorset is compact in geography but expansive in vision. We are contained but diverse, large enough to lead, small enough to pioneer. We can be a distinctive testbed for change, yielding measurable results with transferable, scalable value, meeting global challenges in ways that benefit our economy, communities and environment.

This puts us in a position to not only recover from impacts of COVID-19, but to emerge stronger and more resilient, a role model of recovery. Using the impacts of 2020 to build back better, addressing future prosperity and realising the potential of our people and places by *Living better*.

# INVESTMENT PORTFOLIO



## SMART

Leading a smart revolution across Dorset by accelerating gigabit and wireless connectivity, including 5G. This is a significant opportunity at the heart of our prospectus, increasing the accessibility and application of digital technology to benefit our economy, people and places.



## WELLBEING

Dorset is one of the leading integrated care systems in England, a living laboratory with a unique demographic and some of the most advanced population health intelligence in the UK. Commercial and research opportunities to meet the global challenge of healthy ageing.



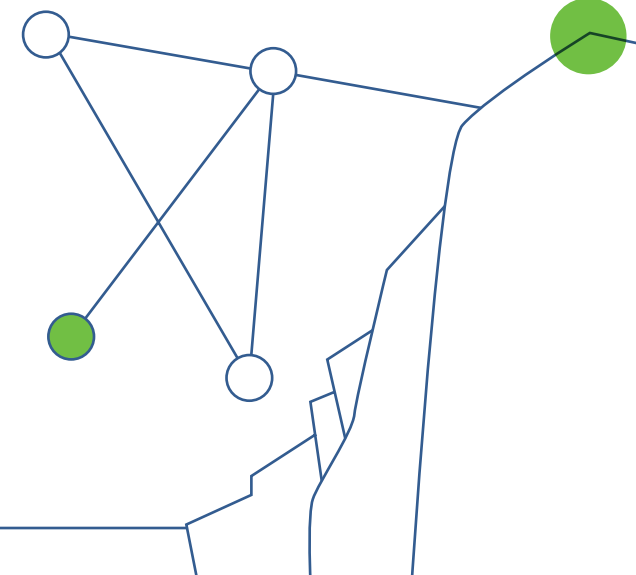
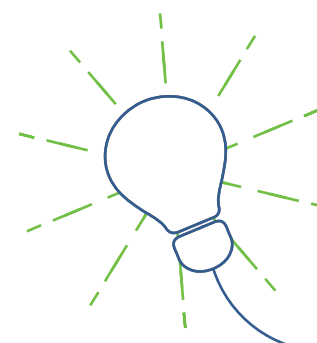
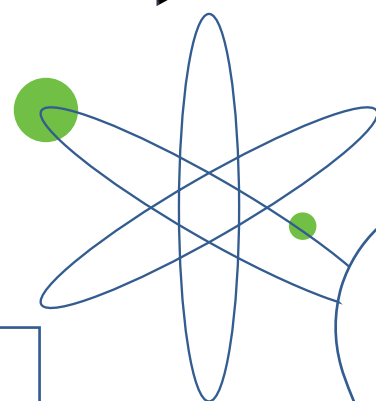
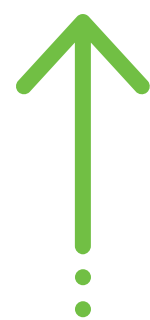
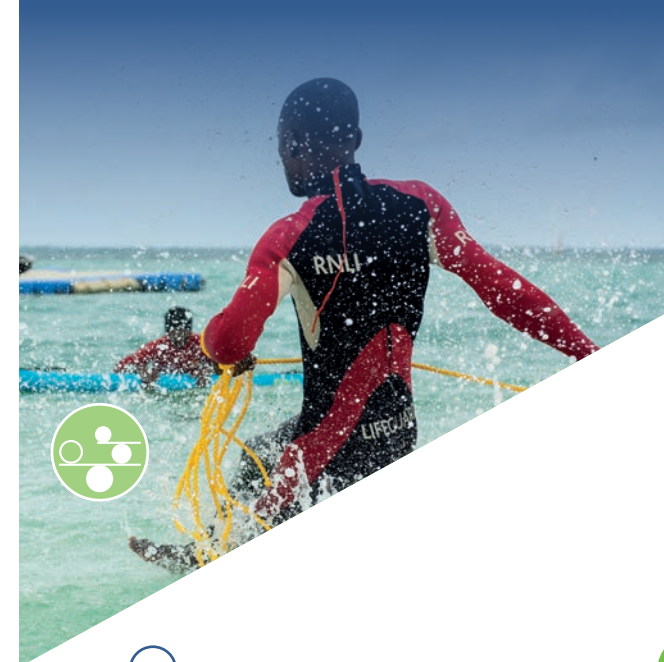
## NATURAL

Enhancing the value of our natural capital on land and at sea, amplifying Dorset's environmental distinctiveness through investments in agri-tech, aquaculture, clean energy and skills, while meeting the challenges of the global climate emergency.



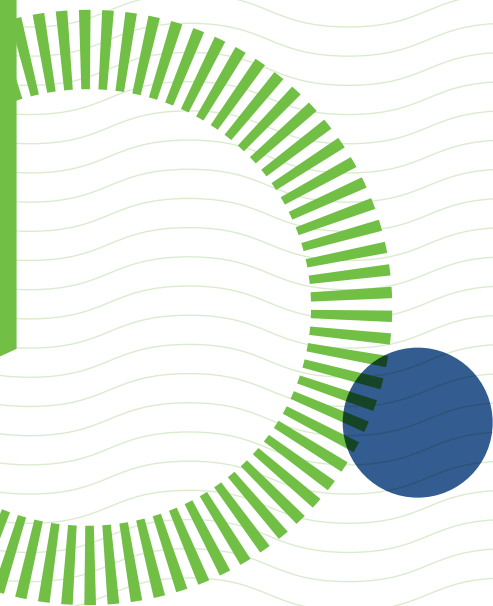
## LIVING

Dorset enjoys an exceptional quality of life – it is a premier destination to live, work, learn and visit. Combining the UK's newest City Region alongside outstanding rural and coastal locations – all conveniently within reach of London and other major UK and international destinations.





# SMART



## Creating the UK's first SMART open ecosystem

The SMART investment portfolio is at the heart of the Dorset Prospectus. It focuses on how technology and data solutions can drive connectivity, sustainable regeneration and economic development across Dorset, improving the lives of local residents and generating value for people, business and places.

Dorset is serious about investing in technology and digital skills as a means to driving productive, clean growth. We already have the building blocks in place of a 'smart' ecosystem that spans city and rural areas.

Bournemouth, Christchurch and Poole Council has an established and growing Smart Place programme with more than 60 engaged partners across our City Region and a growing 5G network. In rural and coastal areas, Dorset Council is spearheading the 5G RuralDorset project looking at how

next generation connectivity can address local challenges and improve lives.

Across our industry clusters, identified in the Dorset Local Industrial Strategy, our businesses and institutions are taking the lead nationally and internationally in the competitive application of smart technologies, and in research and development.

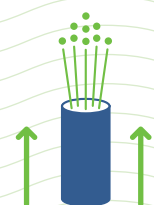
Our investment priority is to complete the rollout of superfast broadband coverage with enhanced ultrafast in economic hotspots, and delivery of our 100% full-fibre Gigabit Strategy.

Opportunities exist in both increasing the accessibility and application of smart technology, helping us realise the potential of co-operative delivery and innovative business models, with an eye on post-pandemic recovery and new working practices.

## TRENDS AND TRAJECTORY



BCP Smart Place  
Place Programme  
will unlock  
**£1bn** investment  
in the next 10 years



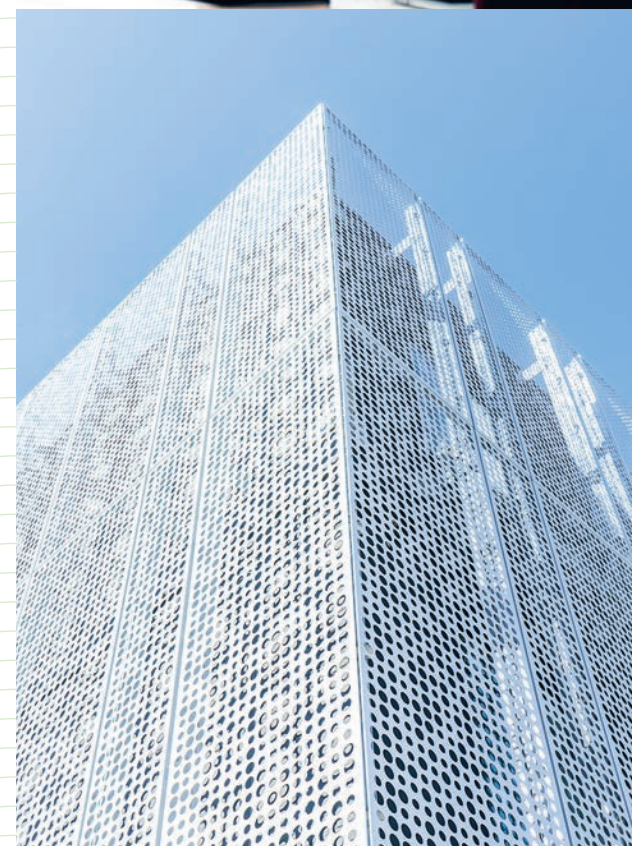
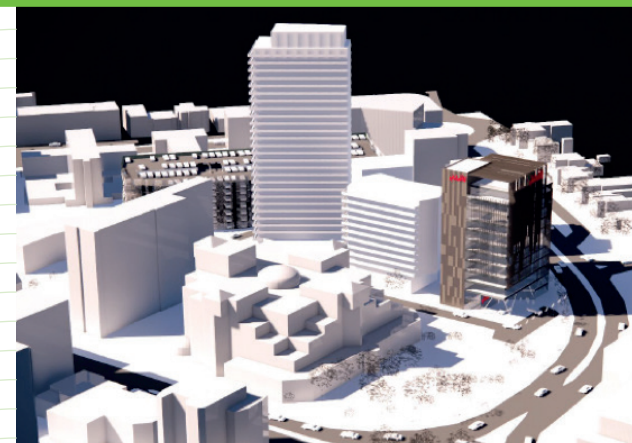
**8%**  
of premises have  
full fibre connection  
(higher than  
England average)



**97%**  
of Dorset has  
broadband  
coverage



Employment in  
creative and digital  
companies is growing  
**10%** faster  
than the UK



## Highlighting our SMART investment opportunities

- OUR SMART AND SUSTAINABLE CITY REGION  
At the forefront of digital transformation
- SMART RURAL AND COASTAL COMMUNITIES  
Unlocking the power of digital for 'future Dorset'
- SMART CLUSTERS  
Driving new industrial opportunities
- SMART INFRASTRUCTURE  
Providing the platform for change
- SMART SKILLS  
Digital life and technological futures

## Immediate asks

- Support from the British Business Bank to create a Dorset 'Smart Challenge Fund'
- Creating a new home for the Digital Catapult's 'Future Networks Lab Accelerator'
- Integrating Battle Lab within the UK's Defence and Security Accelerator (DASA)
- Establishing a Digital Skills Partnership for Dorset





# Smart and Sustainable City Region

## At the forefront of digital transformation

BCP Council's Smart Place programme is working with industry to create digital solutions to improve the lives of residents, the vibrancy of local communities and the prospects of local businesses.

It represents a major opportunity for digital technology companies to establish a presence in our City Region and be at the forefront of digital development.

Smart Places use data and technologies to meet local challenges such as health care, sustainable transport, industrial productivity and supporting local supply chains, in an integrated way.

The Smart Place Programme and its ambitions are strongly supported by a number of UK government

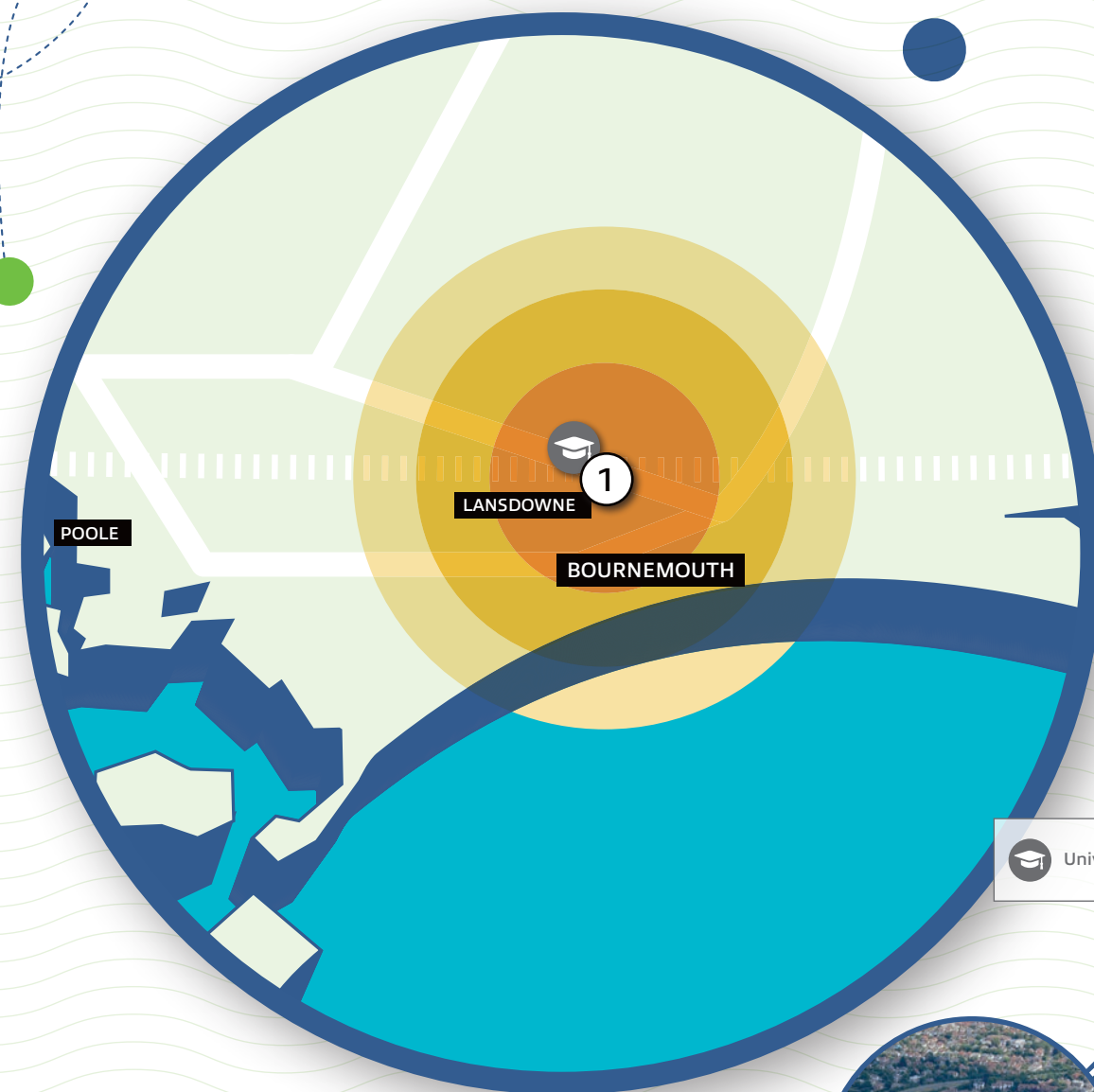
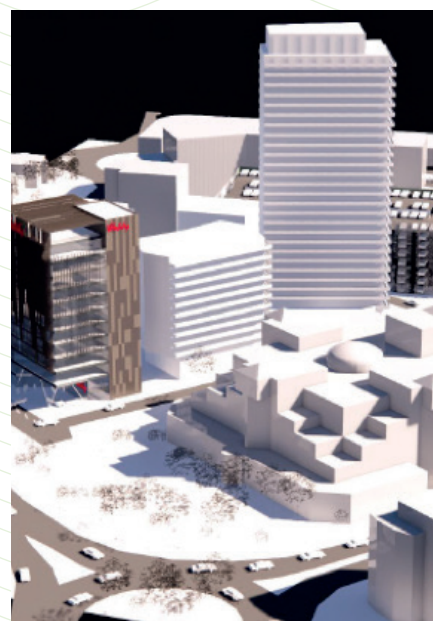
departments including the Department of Digital, Culture, Media and Sport; the Ministry of Housing, Communities and Local Government; the National Cyber Security Centre and the Department for International Trade.

The Council has already developed a significant Smart Place R&D Consortium with over 60 industry partners, underpinned by an industry-leading 5G network. It aims to create a **Smart Place Digital Innovation Hub** with the potential to include the Digital Catapult's **Future Network Labs Accelerator** to support the rapid growth of digital technology start-ups.

The hub will connect charities, public sector services, education and other organisations across an open,

co-creative community of technology companies who can develop and implement innovative solutions for mutual benefit.

Overall, **BCP Council's Smart Place programme** represents a major opportunity for creative and digital companies to trial new technologies to support the area's social and economic priorities. A Smart Place pilot is already taking place around the Lansdowne area of Bournemouth, with companies beginning to develop proof of concept, meaningful solutions to address local challenges.



## INVESTMENT HIGHLIGHTS

### ① Lansdowne Central Business District

With a primary focus on support for new tenants, Lansdowne in Bournemouth is developing into a major commercial business district and is our key 'landing point' for smart-tech business in the City Region.

To enable Smart Place trials to take place, we are investing in underpinning digital infrastructure, namely 5G, ducting and fibre, public Wi-Fi and Internet of Things (IoT) networks. This pilot project is exploring how emerging 5G technologies can enhance

Smart Place outcomes. 5G enables faster download and upload speeds and greater capacity of the network, allowing more people to access more data on more devices at the same time.

Although the radio technology underlying 5G is well proven, the deployment of 5G networks is still relatively new. This high-tech pilot not only increases Wi-Fi connectivity speed but is enabling the area's advanced manufacturing, health and social care sectors to test and trial 5G-enabled

equipment within the business district. We are excited to offer the location to more businesses looking to establish in the City Region.

The programme will soon be extending into the Bournemouth suburb of Boscombe, with further expansion planned in the next few years across the whole of the City Region – including our MedTech Science Park.





# Smart Rural and Coastal

## Unlocking the power of digital for future Dorset

Alongside the Smart Place programme in our City Region, rural and coastal areas are working to unlock the power of digital to drive Dorset's future growth and resilience. This includes its ability to recover from the pandemic, regenerate economically and improve opportunities for all businesses and residents via a full fibre spine network and wireless connectivity.

5G RuralDorset is a ground-breaking initiative working to understand how

next generation connectivity can help people live better, safer and more prosperous lives in rural communities, even in environments as sensitive as Dorset's UNESCO-designated world heritage coastline.

There are four active trials (see below) currently operating in the Dorset Council area, looking at innovative public, social and business uses of improved mobile coverage. They are testing whether this connectivity can

be delivered cheaper and faster using existing masts, buildings and fibre wherever possible, to minimise visual and other impacts.

The research and development project will contribute to the understanding of how 5G can be used to address some specific challenges – public safety, economic growth, food production and environmental – and create new opportunities in rural communities in Dorset and across the UK.



## INVESTMENT HIGHLIGHTS



### ① The Future of Food

We're developing new wireless technology on existing masts and fibre owned and operated by internet service provider Wessex Internet to allow innovative agricultural uses. These may include 'smart' farm controls, crop and livestock monitoring, the use of robotics and using drones to spray more precisely and minimise chemical run-off into local water courses.



### ② Rural industries and services with Vodafone

New mobile services are currently being trialled to unlock social and commercial benefits. These will include Vodafone bringing enhanced mobile phone coverage to the area for locals and the one million visitors who visit each year. Additional possible uses, from tourism and education to healthcare, will be considered.



### ③ Connected coast

We are improving safety along a section of the coast by upgrading access to digital communications for first responders and supporting organisations including the RNLI and Maritime and Coastguard Agency. We are also monitoring landslide activity using 5G-enabled IoT and other technologies.



### ④ Innovation Accelerator @ Dorset Innovation Park

Advanced 5G indoor and outdoor mobile connectivity is being provided to help businesses test and develop products in a collaborative and secure way. This Enterprise Zone and advanced-engineering centre already supports large and small companies that develop innovative connected products and services.





# Smart Clusters

## Driving new industrial opportunities

Dorset is home to collaborative clusters of deep expertise and specialisation, as identified in the area's Local Industrial Strategy.

We are working to connect these industrial clusters with our smart places investment – maximising the economic opportunities of the application of technology, and strengthening collaboration among and between those clusters.

In support of this, we will be taking forward a Dorset Smart Challenge Fund to help businesses access the finance they need to make the most of new technologies, and to drive innovation and growth.

As well as improving access to the very latest smart technology, our research and higher/further education strengths (outlined in our smart skills programme) support a strong labour market and further potential.

Our strengths and opportunities include:

- **One health** with strengths in integrated health research and implementation across the One Health agenda: humans, animals and the wider environment.
- **Defence and security** – with a growing focus on defence and security information systems and cyber security, this is an industry-led cluster with strong engagement from the MoD – including their Battle Lab R&D facility at the Dorset Innovation Park, which includes indoor 5G facilities provided by 5G RuralDorset.
- **Natural Capital** – including our specialisms in agritech, aquaculture and environmental technologies, with an increasing focus on the use of smart technology (outlined in our NATURAL portfolio), including tackling climate change.

- **Creative, tourism and cultural** sectors – underpinned by a number of centres of excellence across the area, including Arts University Bournemouth and Bournemouth University, and an emerging cultural programme described in our LIVING portfolio. The 'createch' sector, combining creative industries and new technology, is an area of exciting opportunity.
- **Finance and professional** services – particularly those using smart technology to reach new markets and 'disrupting' existing ones, including the growth in our fintech cluster.
- All underpinned by our **engineering and manufacturing** base, stretching across all areas of Dorset and increasingly smart enabled, such as the growth in 3D printing and machine learning.



## SMART APPLICATION CLUSTERS



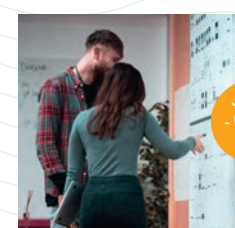
One Health  
(inc. MedTech)



Defence & Security



Environment and  
Agritech / Aquaculture



Creative and Cultural



Financial and  
Professional Services



Engineering and  
Manufacturing base







# SMART Infrastructure

## Providing the platform for change

Dorset is accelerating how people interact digitally to ensure the region is well connected and a great place to live, visit and do business.

Our investment priority is to complete the rollout of superfast coverage across Dorset, with enhanced ultrafast in economic hot spots. We're pressing for comprehensive 5G coverage to ensure all communities benefit, regardless of location, using complementary technologies where required to ensure speeds are increased.

Our Smart portfolio highlights critical investments in digital infrastructure, with a series of investment opportunities across fibre and 5G, as well as linked opportunities in data centre development, data platforms (including private networks) and aligned services and applications linked to our industry clusters.

Although we have made excellent progress in coverage, more upfront investment is required.

Our City Region smart infrastructure priorities include gigabit fibre connectivity, ubiquitous public Wi-Fi, innovative 5G networks and an open architecture platform that hosts 'place data'.

Across the wider Dorset geography, we are prioritising early public investment in localised hubs, to extend our high capacity spine and improve market and commercial conditions for on-going investment. This will deliver 100% gigabit coverage, in partnership with commercial companies (including Vodafone) and Government. We will also be working with established mobile network operators to accelerate roll-out of 4G and 5G, delivering a mix of next-generation Wi-Fi and cellular coverage to excluded communities.

Dorset's 'Gigabit Strategy' is currently being finalised to create a jointly-owned Dorset/Government programme to March 2026. It will build on the existing 5G RuralDorset pilot project.



We are also particularly interested in linked opportunities such as smart grid investment and ensuring all new build developments integrate smart connectivity. Micro-power (renewable) generation is one concept we are considering for our future energy resilience, while meeting our net zero carbon targets.

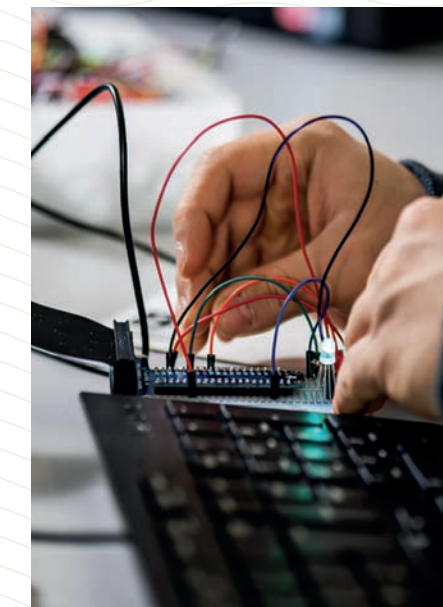
# SMART Skills

## Digital life and technological futures



An essential element of our Smart portfolio is our comprehensive skills, learning and training programme, much of which is in place, with elements already having national and international recognition. We have an excellent working partnership across our schools, colleges, universities and business. Our ambition is to further develop the depth of our smart skills, with an emphasis on *digital life, creative tech and technological futures*. Key to this will be establishing a Government-backed Digital Skills Partnership for Dorset and our programme will include:

- **Digital skills for life**  
A comprehensive range of digital skills programmes from digital access and addressing the digital divide through to digital leaders and maximising digital opportunities for all business.
- **Smart engineering**  
Including 'fibre training' to ensure an indigenous local workforce to support the installation and operations of our comprehensive digital infrastructure; advanced engineering skills to support the integration of digital



tech and embedded software across the engineering and manufacturing spectrum (including smart grid technology, aerospace/defence, agritech, marine and construction).

- **Creative and Digital specialisation**  
Specialist skills support in those sectors unlocking the wider potential of smart tech, including defence (information systems and cyber security); health and medtech; creative and cultural industries; computer animation and visualisation.
- **Creative tech**  
Maximising the human element of the industrial revolution 4.0, bringing together arts, creativity, science, design and enterprise skills to ensure human centred design and user experiences are built into our smart approach.





# WELLBEING

## A 'total business environment' for the future of integrated health and care

Across the world, the number of people aged 65 and older is growing faster than all other age groups. This is driving what the United Nations says will be one of the most significant social transformations of the 21st century, with implications for nearly all sectors of society.

Meeting the challenge of healthy ageing is also a huge opportunity for Dorset because our population will mirror the global demographic of 2050 some 20 years early. We are also one of the leading integrated care systems in England.

Our WELLBEING portfolio unlocks healthy ageing as a catalyst for technological advancement, population health management and social wellbeing, harnessing 'the Dorset demographic crunch' as well as the post-pandemic recovery into an economic and research strength.

In the last year, the importance of excellent health and care services has been brought into sharp relief by COVID-19. Fundamental to the success of our recovery will be a flexible, agile, empowered and interconnected network of innovators, scientists and researchers. We're creating an exciting future that sees new investment and innovation across our Integrated Care System using 'smart-health' technology and our natural environment, alongside our growing Living Lab in the MedTech Science Park.

Over the next 10 years we have an opportunity to bring all these facets together into a Dorset health intelligence powerhouse. We can be a global resource for countries around the world to learn about healthy ageing years before their own demographic bubble.

## TRENDS AND TRAJECTORY



**University Hospitals Dorset**  
Established in October 2020



**Dorset Integrated Care System**  
is amongst the most advanced in the UK



**Social care**  
spend across Dorset is **39% of total expenditure**  
(England average is 25%)



**30%**  
of Dorset's population will be **over 65 by 2030**  
(England will be 23%)



## Highlighting our WELLBEING investment opportunities

- **EMPOWERED SELF-CARE FOR ALL**  
Creating an innovative digital approach to health and wellbeing
- **DORSET'S LIVING LAB**  
A unique approach to SMART health
- **THE DORSET MEDTECH SCIENCE PARK**  
The ideal environment to nurture industry-leading innovation research
- **HEALTH AND NATURE DORSET**  
Establishing a Dorset 'centre of excellence' for wellbeing in nature
- **SKILLS FOR OUR FUTURE HEALTH AND WELLBEING**  
An expanded community of practice for digital health technology

## Immediate asks

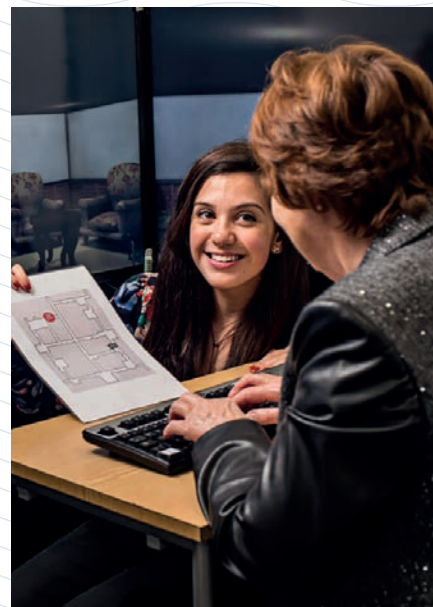
- The creation of a specialist 'Institute of Smart Ageing'





# Empowered self-care

Creating an innovative digital approach to health and wellbeing



With a rising older population in Dorset, changes in the way we deliver care will become more important, especially as health and care costs rise.

Empowering people to manage their own care at home is shown to be better for health and wellbeing and can help people stay healthier for longer.

By using our population health management data, combined with a growing tech sector and expanding digital network, we can be at the forefront of digital health and the development of new products and services which can be tested in Dorset before being rolled out across the UK and beyond.

We are already working with Microsoft, MyHealth, ORCHA, GPs and others on case studies and solution based apps to increase the provision of accessible and affordable products for patients to proactively manage their health and wellbeing – and we want to do more.

Using the advanced population health data we already have we are in a strong

position to lead on the intelligence-led planning and delivery of services, based on local population needs.

We will be prioritising investments to expand our programme of empowered self-care, sitting alongside our Living Laboratory and MedTech Science Park ambitions.

Further investment will enable us to embed and grow new technologies across national and global markets, supporting patients in their daily lives and creating an innovative digital approach to health and wellbeing.

The digital health agenda is rapidly gaining momentum, This programme builds on our existing delivery; providing clinicians with the right skills and digital interventions to manage their populations, improving outcomes for Dorset citizens and reducing long term population health costs by enabling intervention at an earlier stage.

Key investments will include:

- Providing additional capacity for predictive and foresight intelligence, data analysis and data science.
- Expand the Wessex Centre of Excellence for Data and Analytics.
- Developing the Dorset Personal Health Record, a patient portal, built from the Dorset Care Record.
- Expand the development of evaluated, safe digital health technologies for patients.
- Initiate a team of digital health advisors to support the public in the embedding of digital technologies in their daily lives.

# Dorset's Living Lab

A unique approach to Smart Health



Aligned with delivery of the Dorset Smart investment portfolio is the creation of a 'living laboratory' and a key element of the long-term plan for Dorset's Integrated Care System. By bringing together medtech, biotech, life science and digital partners with the NHS, local authorities, Bournemouth University and University Hospitals Dorset, we will be at the forefront of innovation that delivers improved health and wellbeing for our communities.

We have already started this journey with Research Active Dorset and the development of an Innovation Hub bringing together partners across research as well primary, community, secondary and social care. The Living Lab is our next exciting step.

It will act as a magnet for attracting cutting edge industry research companies to Dorset. Our vision is to bring together the depth and breadth of expertise across institutions, businesses and wider society to create new knowledge and tackle the many challenges we face as individuals and communities.

Dorset's Living Lab will build national and international recognition as a 'total business environment' – combining new levels of support, leadership and skills with a collaborative business approach. It will also drive research, development and innovation and provide a space to undertake product trials and early market testing and evaluation.

Our aspirations include the development of several collaborations with both clinical and non-clinical partners, with several discussions already underway. We will build on our current centres of excellence such as the Dorset Intelligence and Insight Service. This has developed some of the most advanced Population Health Management intelligence in the UK and allows us to drive data-led planning, design and delivery of services within primary care and the wider care system using a holistic, integrated and whole system approach.

The Living Lab main hub will be located at the Dorset MedTech Science Park at Wessex Fields, Bournemouth. To ensure access to the resources and populations

across all Dorset, a Living Lab satellite will be created on the Dorset County Hospital Site in Dorchester. This will provide a conduit between the Living Lab and the acute hospital services in Dorchester as well as to primary and community health and care services throughout Dorset.





# The DORSET MedTech Science PARK

## Nurturing innovation and research in SMART health

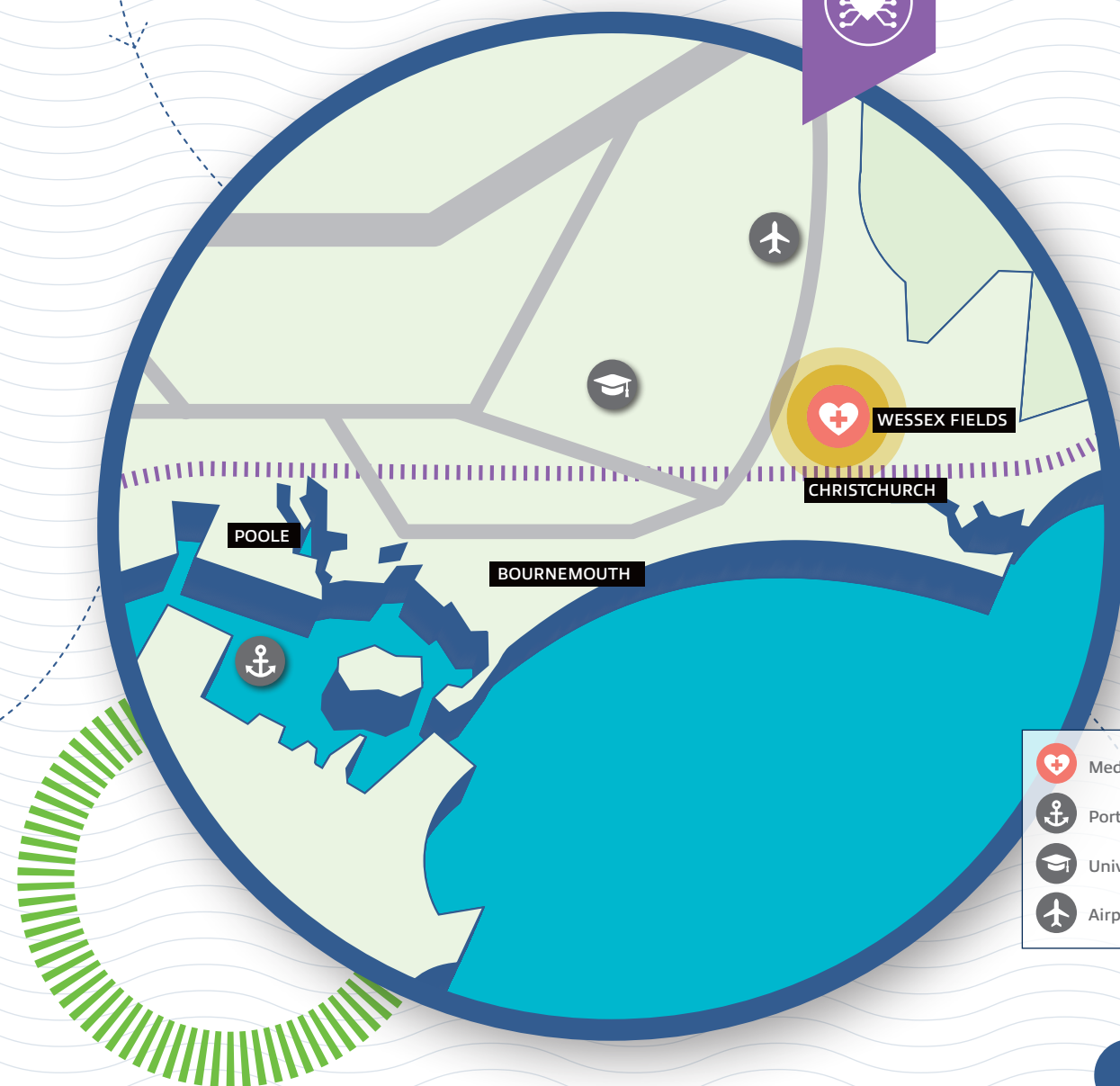
A unique opportunity to scale-up existing collaboration (University Hospitals Dorset, Bournemouth University) for the creation of more healthcare professionals, research and business growth as part of a new, cutting edge MedTech science park at Wessex Fields.

Our vision is for Wessex Fields to be the ideal environment to nurture industry-leading innovation research. Digital health is a growing sector and the Park's proximity to University Hospitals Dorset provides a fantastic opportunity to combine medical research with some of the fastest IT connectivity in the

country and Bournemouth University, a specialist university in medical science and healthcare.

Recent examples of their collaboration include the creation of the Institute of Medical Imaging and Visualisation, the Orthopaedic Research Institute and a joint clinical trials unit. Each year University Hospitals Dorset provides hundreds of placements, whilst Bournemouth University provides professional development for University Hospitals Dorset staff. This will be a carbon-neutral scheme, promoting healthy use of green space while creating a landmark development.

The Dorset MedTech Science Park will be the home of the Dorset Living Lab as well as a mixed use development to support growth of the MedTech sector including incubation facilities, grow-on space and some 500 key worker homes. This also provides a gateway to the wider NHS system in Dorset, including the innovation plans, supported by AHSN Wessex, to develop Dorset's ability to adopt and spread innovations. This includes being an excellent location to undertake product trials and early market testing and evaluation.



- Medtech
- Port
- Universities
- Airport





# Health and Nature Dorset

## Establishing a Dorset 'centre of excellence' for wellbeing in nature

Linked to our NATURAL portfolio, our vision is to create a Dorset 'centre of excellence' for wellbeing in nature.

This responds to the NHS Long-Term Plan and Dorset Local Nature Partnership's Nature Health strategic priority to help people improve their health by using green spaces and engaging with nature.

We will build on the work of the Health and Nature Dorset (HAND) collaboration by scaling up activity and embedding nature-based wellbeing within the Dorset Integrated Care System.

HAND will strengthen partnership working, increase capacity and improve communications. As one of the supported outcomes of the Dorset Natural Capital Trust, it will form a sustainable model to deliver nature-based wellbeing, including green prescribing, into the future.

Activities led by HAND will include:

- Improvements to green spaces and access to green space.
- Promoting green prescribing.
- Engagement with business to support staff wellbeing and recovery opportunities.
- Nature-based wellbeing tourism.
- Exercise and healthy living outdoors through organisations like Active Dorset.



# Skills for future health and wellbeing

## An expanded community of practice for digital health technology

Dorset's strength across our Wellbeing portfolio is underpinned by the quality and expertise of our education and research institutions.

These include:

- AECC University College, specialising in health and imaging for over 50 years.
- Bournemouth and Poole College, with a comprehensive range of subjects across health and care.
- Bournemouth University with an international reputation in health and care, services and systems and public health, as well as medical imaging and visualisation, simulation and the use of AI in healthcare.
- Our Dorset, a partnership of the NHS and local councils working together to deliver Dorset's Integrated Care System, offering a large range of training and career development opportunities.

As an anchor institution and cornerstone employer in Dorset, Our Dorset provides for a co-ordinated and comprehensive training and development approach, supporting new and existing clinical and non-clinical staff in retraining, refreshing and developing new skills.

This will prioritise retention, growth and development of our health and care workforce.

By growing a pipeline of highly skilled employees and future business-leaders across the sector and establishing career pathways and spin-off and start-up opportunities, we will ensure future resilience for the wider sector and continued excellence in healthcare for Dorset communities.

As part of our Wellbeing portfolio, an increasing priority for the future skills of the health and care sector will be aligned to the digital health agenda and wider innovation (such as AI, data and analytics, telehealth, imaging and robotics) across health and medicine – supporting not only Our Dorset, but our 'Living Lab', empowered self-care



and overall sector growth ambitions. Investment and implementation priorities will deliver:

- A joint approach to the attraction and recruitment of the Our Dorset and wider workforce.
- A development pipeline for health and care support alongside co-designed and co-delivered sustainable career pathways to increase retention.
- Increased and diversification of clinical placement capacity and enhancement of placement infrastructure.
- Leadership development and talent management for all.
- Fellowship opportunities to complement apprenticeship programmes and widening participation.
- Widening the range of non-accredited and accredited learning across the Integrated Care System.
- An expanded community of practice for digital health technology.





# NATURAL

## A leading Natural Capital economy

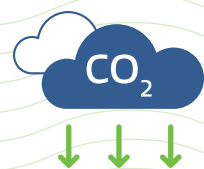
This is an investment portfolio focused on unlocking the economic value of Dorset's natural capital. We believe that natural capital is a common asset, not just to be used by a small section of society – but delivering a return to the common good. That might be measured in terms of renewable energy generated, biodiversity net gain, improved economic prosperity and ultimately achieving net zero carbon output.

All opportunities in this portfolio will target the implications of the global climate and ecological emergencies across our 'blue' (marine) and 'green' (land-based) economy. Working closely with the Dorset Local Nature Partnership, we directly respond to the UK Government's 25-year Environment Plan, Energy White Paper, the Prime Minister's Ten Point Plan for a Green Industrial Revolution and the Government's new agricultural policy, which is based on the principle of 'public money for public goods'

## TRENDS AND TRAJECTORY



**Renewable energy**  
is an untapped resource –  
with rates of growth  
much lower than the  
England average



**CO<sub>2</sub> emissions**  
are lower than the  
England average –  
and reducing faster



**£1.5 bn**  
Estimated annual value of  
**Dorset's natural  
capital**



**67%**  
of Dorset is  
identified as areas of  
**outstanding  
natural beauty**



## Highlighting our **NATURAL** investment opportunities

- **BLUE ECONOMY**  
Dorset – home of the  
English Aquaculture Sector
- **GREEN ECONOMY**  
Transforming food production
- **CLEAN ENERGY**  
Unleashing Dorset's clean  
energy revolution
- **NATURAL CAPITAL**  
Creating Dorset's Natural Capital Trust
- **GREEN AND BLUE SKILLS**  
Developing a workforce ready  
for a Green Industrial Revolution

## Immediate asks

- The location for the England Aquaculture Centre of Innovation and Dorset Aquaculture Park
- A Rural Productivity Deal
- Additional investment for grid infrastructure across the Dorset area





# Blue Economy

## Dorset – home of the English aquaculture sector ∞

The UK aquaculture industry, worth an estimated £1.4 billion in 2016, is expected to more than double in the next 10 years, growing faster than the UK economy to £3.6 billion GVA and is projected to be the primary source of seafood by 2030.

Also known as aquafarming, aquaculture is the farming of fish, crustaceans, molluscs, aquatic plants, algae and other organisms.

Dorset's thriving aquaculture sector has been identified by the Department for International Trade as a High Potential Opportunity (HPO) for inward investment.

The excellent water quality of Dorset's inshore waters has enabled a diversity of aquaculture to develop and there is significant potential for this sector to expand at sea and on land to meet increasing global demand for healthy fish, shellfish and aquatic plants.

Dorset is also home to CEFAS (Centre for Environment Fisheries

& Aquaculture Science), a world leader in marine science and technology. Bournemouth University is also leading research in conserving waters and coastline for future generations.

Our next step is the creation of the **National Aquaculture Centre of Excellence**, a self-sustaining centre for the industry and wider sectors across England and the South West, linked into the Scottish Aquaculture Innovation Centre.

The will provide a range of services to support the continued growth of the aquaculture sector, helping to drive innovation, applied research, and the development of new industry skills while contributing to food security and health and wellbeing.

The development of the Centre in Dorset would also benefit complementary maritime sectors throughout the supply chain such as ship building, anchoring and moorings, produce processing and technology development.



It also sits alongside the Dorset Mariculture Strategy, which outlines key priorities across infrastructure, innovation, industry support and skills to enable the aquaculture sector to reach its full potential.

Offshore, we are working with local partners including the Dorset Coast Forum and CEFAS to create the **Dorset Aquaculture Park**. This would identify test bed opportunities and the potential for offshore aquaculture development zones (pre-licensed/permitted), as well as on-shore Recirculating Aquaculture Systems and freshwater locations.

# Green Economy

## Agri-tech – transforming contemporary food production ∞



The agri-tech sector is undergoing an exciting transformation, developing new technologies to expand food production whilst reducing the impact on the environment; pushing the UK towards the forefront of global agricultural innovation.

We will build on previous investments which have supported growth in agri-tech across Dorset, with particular opportunities in nutrition, informatics, remote sensing and low impact agriculture.

Although Dorset's food and drink sector already makes a significant contribution to the economy and Dorset's appeal as a destination, there remains opportunity for investment to further strengthen local supply chains and producers, and support the move towards low carbon production, land management practices and overall increases in rural productivity.

This will become increasingly important with the introduction of the Government's Environmental Land Management Scheme in the coming



years, which will reward farmers for 'public goods' including more sustainable farming, enhanced natural beauty and heritage assets, and clean air and water.

Aligned to the focus on aquaculture, this programme will cover the pan-Dorset food and drink sector to incubate and boost sustainable food production, processing, marketing (including digital), local sales and consumption.

We will also develop supply chain opportunities in hospitality and tourism, health, care and wellbeing, as well as wider public procurement.

This is an area of growth for both a locally resilient food and drink programme and accessing new global markets.

The programme aligns to our 'unlocking rural and coastal potential' focus and our work with the Great South West in taking forward rural productivity through a 'rural productivity deal'.







# Clean energy

## Unleashing Dorset's clean energy revolution

Dorset remains an untapped resource for clean energy generation – with some 96% of Dorset's energy requirements being imported. This creates a significant opportunity in terms of future demand, and our ambition is to unleash a new clean energy revolution in Dorset – generating all of our energy requirements through local renewable and net zero carbon sources by 2050.

Clean growth and energy have been identified by the Government as important enablers of economic growth as part of a 'green industrial revolution'. Forecasts show that the UK clean growth sector could grow by an estimated 11% per year between to 2030 – four times faster than the rest of the economy – and could deliver between

£60 billion and £170 billion of export sales of goods and services by 2030.

Our clean energy ambition aligns with our linked 'smart energy' focus in our Smart technology portfolio, and the opportunity to drive new local energy markets. Recent evidence showing the potential for a new approach to energy flexibility opens up a number of opportunities for a mix of energy supply within a constrained local market using smart grid connectivity and battery storage.

This enables a range of mix and scale of clean energy production (on land and offshore) – and we intend to maximise this through the development of a stimulus package for new clean energy

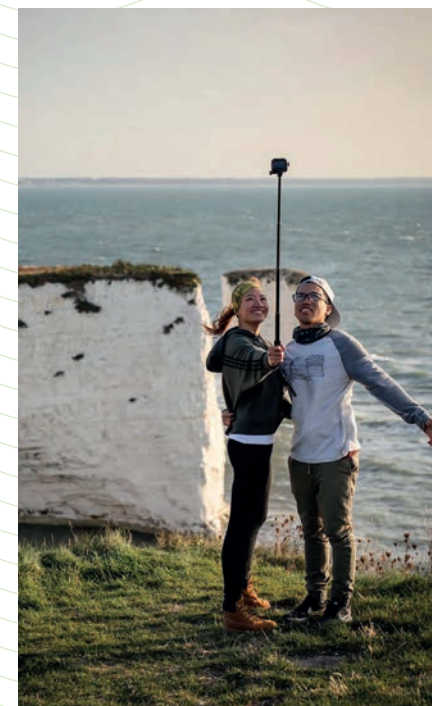
generation across Dorset, with the potential to invest at scale or in smaller scale production (such as unlocking district or regional networks).

Alongside this, we are looking to invest in an SME low carbon programme, focused on increased energy efficiency and renewable energy use across all SMEs in the Dorset LEP area.



# Natural Capital

## Creating Dorset's Natural Capital Trust



The Dorset natural environment underpins much of our economy and our wellbeing, with more than half the county designated as Areas of Outstanding Natural Beauty as well as important local, national and international designated sites for wildlife. It is also an untapped potential of natural capital return – estimated to be worth some £1.5bn per year. In enhancing and protecting our environment, we can also support the Dorset-wide ambition to realise net zero carbon emissions by at least 2050.

The creation of a **Dorset Natural Capital Trust** will create local markets for environmental land management. This can enable up-front investment in large-scale habitat restoration, nature-based solutions for climate adaptation and mitigation, nitrate and carbon offsetting, and achieving an overall net gain in natural capital across our area. This includes urban sites and will ensure that access and recreation continue to meet the needs of residents and visitors in a sustainable way.

Achieving real environmental enhancement for Dorset can be delivered alongside much needed growth for our communities.

The Trust itself would provide employment and training, while funding new practices for land management and helping the farming sector to adapt to change. It would provide opportunities to invest in land management that benefits both the economy and environment, for example reducing flooding, capturing carbon or nutrients, recovering nature or creating green tourism and wellbeing opportunities.

Developing a shared vision for Dorset's natural capital will improve the cost efficiency for all businesses, conservation organisations and local government in meeting their responsibilities, ensuring best use of funds available.







# Green and Blue Skills

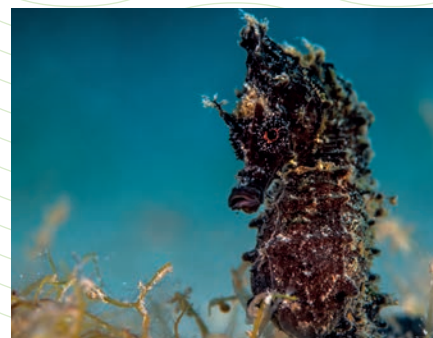
## Developing a workforce ready for a Green Industrial Revolution

Underpinning the success of our **Natural** portfolio is a comprehensive 'blue and green' skills programme. Working in partnership across Universities, colleges and other training providers in Dorset, we are developing a comprehensive suite of learning and skills opportunities.

These are being developed in association with employers to ensure that our current and future talent have the right skills we need, building on our recognised strengths and specialisms. These include the Kingston-Maurward Business and University Hub, the first facility of its kind to link agricultural skills development with local businesses in Dorset.

These include:

- **Environment:** Ecology and wildlife conservation; environmental science; environmental technologies.
- **Energy:** STEM based skills in chemistry, specialist engineering, advanced manufacturing and materials science. \*Links to engineering Centre of Excellence described within the 'Smart' portfolio.
- **Marine/aquaculture:** National Centre of Marine Excellence; marine ecology and conservation; marine archaeology; boat building and handling.
- **Agri-Food/land:** Horticulture and plant science; arboriculture; animal welfare and science; agriculture; land management.
- **Sustainable construction:** Modern Methods of Construction.



# Natural Map

## Natural capital areas of interest

- Area of Outstanding Natural Beauty (AONB)
- Special Area of Conservation (SACs)
- Marine Conservation Zones (MCZ)
- World Heritage Site (WHS) – Jurassic Coast
- Nature Map – Strategic Nature Areas







# LIVING

## CITY, COAST AND RURAL LIVING

### Dorset, the premier destination to live, work and visit

With a population approaching 800,000 people, over 38,000 businesses and an annual economy worth over £18.5 billion – Dorset is an important location on the South coast of the UK, acting as a gateway to both the South West and South East.

Dorset is an attractive base for employers and employees alike. Framed by the World Heritage Site of the Jurassic Coast, we offer city, rural and coastal living in a self-contained location within easy reach of London, but without the costs of a capital city.

Dorset brings all the infrastructure of a city with environmental benefits for a great work/life balance, making it an attractive prospect for talent attraction and retention.

We are the UK's top area for high growth digital businesses, second-fastest growing area for start-ups (with high survival rates), and have the third largest financial sector in the UK.

Coupled with a simplified local government structure committed to enabling growth and prosperity, this is a place which is evolving, innovating and accelerating.

While we have felt the social and economic impacts of coronavirus, we have seen resilience in our businesses, communities and institutions. Our LIVING portfolio presents an opportunity to really 'build back better' in the wake of the COVID-19 pandemic, enhancing our economy, environment and way of life.

### TRENDS AND TRAJECTORY



**8th**  
largest  
non-mayoral city region  
in England



**International**  
connections  
through Bournemouth  
International Airport and  
the Port of Poole



**30**  
million visitors  
to the Dorset area  
every year



**18%**  
of rural Dorset's  
workforce is  
self-employed



## Highlighting our **LIVING** investment opportunities

- **LIVING A SUSTAINABLE FUTURE**  
The UK's newest Smart City Region  
and unlocking Rural and Coastal potential
- **CLEAN, CONNECTED DORSET**  
Global and local
- **DESTINATION DORSET**  
A premier cultural destination
- **DORSET SKILLS FOR ALL**  
Recovery, regeneration and growth

### Immediate asks

- Formal Government recognition of the City Region
- Devolution deals for transport and adult skills
- A South West Tourism Zone
- City of Culture status
- Extension of the Dorset Enterprise Zone, including support for the BCP City Region Accelerated Economic Zone



# The UK's Newest City Region

## Bold. Confident. Proud.

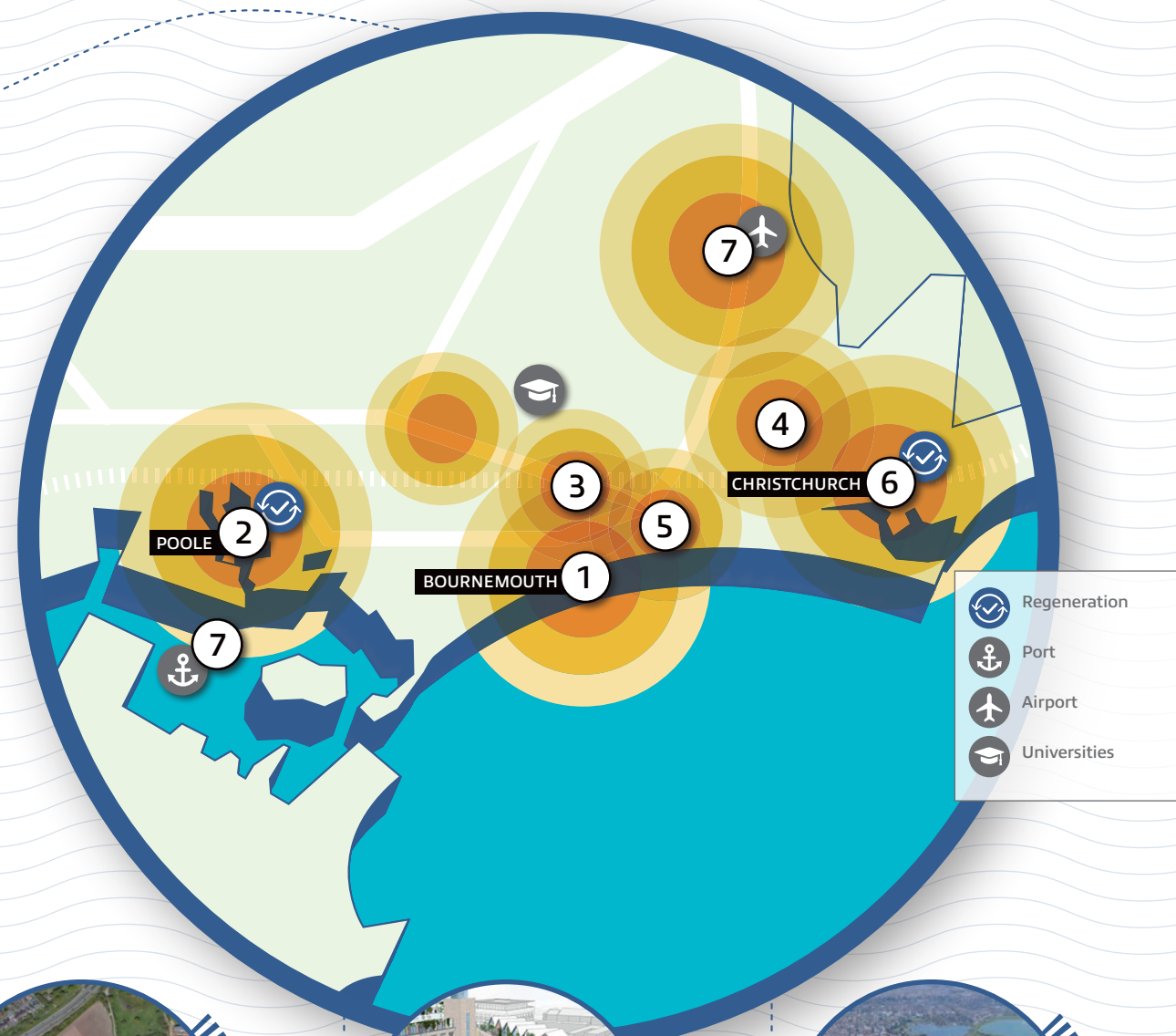
Bournemouth, Christchurch and Poole is the UK's newest City Region and it's brimming with prospects, positivity and pride. It's a place where culture and heritage meet innovation and modernity, village meets town, country meets coast, creativity meets digital, businesses flourish and people thrive. Ambitions for the future are influenced by a 'recover-regenerate-reimagine' approach following the economic

impacts of COVID-19, with a strong desire to do things differently in the future, not simply revert to how things were.

We have a vibrant cultural centre adjacent to an iconic seafront, three leading universities home to cutting-edge research and talent, and a central business district with emerging tech clusters and professional service sectors using smart-enabled infrastructure



connections from air and sea ports, as well as a growing specialism in medtech and health care, our City Region has significant investment potential.



## INVESTMENT HIGHLIGHTS



### ① The City Arc

At the heart of Bournemouth's 'City transformation' opportunity, and part of a cultural reimagining with a new cultural quarter and seafront redevelopment. The opportunity to redevelop the Arc is now coming to fruition and includes the Bournemouth International Centre, pier and approach as well as the Pavilion and Winter Gardens.



### ② Poole development and regeneration

A number of public and private-led schemes in and around the Poole area are coming soon for investment and redevelopment. These include large-scale schemes to the north of Poole, such as **Holes Bay** and major redevelopment opportunities in the heart of Poole, such as the historic **Old Town** and **Town Centre North**.



### ③ The Central Business District location of Lansdowne

Lansdowne CBD is ready now as an immediate location for business to locate, particularly those using the smart-enabled infrastructure of the City Region or those undertaking close collaboration with local University partners.



### ④ Wessex Fields

The Wessex Fields development is described in detail in our WELLBEING section as the location for the Dorset MedTech Science Park, underpinned by a strong collaboration between University Hospitals Dorset, Bournemouth University and BCP Council.



### ⑤ Boscombe

Having just secured nearly £25m investment from the Government's Town Deal, the Boscombe-Bournemouth regeneration vision is now close to realisation. Creating a beautiful, healthy and green place that enhances Boscombe's Victorian heritage.

### ⑥ Christchurch town centre

We will be supporting a programme a programme of activity to improve Christchurch as a visitor destination, refresh its retail offer and attract more people to live in the town centre.



### ⑦ Poole Harbour/Bournemouth International Airport and Aviation Business Park

An identified 'economic acceleration zone' within the BCP City Region, development opportunities are in place to capitalise on worldwide trading as well as build-on existing engineering and manufacturing strengths. Poole Port and Bournemouth International Airport have the potential to create over 5,000 jobs and an economic boost of nearly £2bn over the next 20 years. The airport's 80-hectare Aviation Business Park offers the single largest **investment ready** employment opportunity in the City Region.



# Unlocking rural and coastal potential

## Living a sustainable future

Our rural and coastal areas are a central part of the fabric of Dorset – and their on-going resilience and quality are critical. Continued investment in these places is essential if we are to aid recovery from the impacts of COVID-19 and tackle climate change – whilst enhancing Dorset as a place to live, work and visit. We can build back better.

Our investment in place is informed by need, opportunity and the ambition to

achieve inclusive growth and ensure all elements of the community benefit from increased prosperity. Balanced growth will be crucial to improving sustainability and progressing towards a zero-carbon Dorset. Unlocking Dorset's rural and coastal potential will require investment in a range of supporting infrastructure, including digital networks and renewable energy. Improvements to transport

infrastructure will create healthier lifestyles, better access to jobs, combat the climate emergency and improve air quality. This will lead to a fitter and more active workforce, improved environment and reduced congestion on the roads, with a growing strength in digital connectivity, maximising natural capital and a circular economy approach.

## INVESTMENT HIGHLIGHTS



### ① Southern Dorset Growth Corridor

A series of inter-connected sustainable communities, along a corridor from the Weymouth and Portland conurbation to Dorchester are planned for future development. Continuing the innovation and good practice developed as part of the award-winning Poundbury development, our vision is to create exemplary places to live and work, complementing the wider Dorset landscape and enhancing the existing communities in Dorchester, Portland and Weymouth.



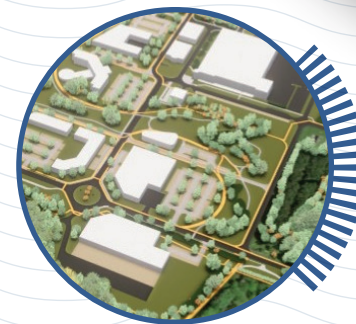
### ② Market and Coastal Towns

Supporting the reinvigoration of town and village living in Dorset through the regeneration of up to 17 centres as part of a community-led approach to development. Creating additional homes and workspace within the existing footprint of towns and revitalising the role of town centre retail and leisure.



### ③ Weymouth Area regeneration

With an immediate focus on master-planning and land/property assembly, opportunities for mixed-use regeneration and enhancing these important localities are a priority for investment. We intend to innovate new approaches to support investment, including exploring incentives such as Local Development Orders and business/retail zones.



### ④ Dorset Innovation Park

Dorset Innovation Park at Winfrith is developing as an advanced engineering cluster of excellence for the South West, building on its strengths in marine, defence, energy and cyber-security. The Park offers office space, workshop facilities and fully serviced commercial employment land with Enterprise Zone status benefits such as business rate relief and simplified planning.

There is space and support to expand, access to local finance, full fibre connectivity and pilot 5G networks. It offers a secure facility and the presence of two world leaders in defence technology – Atlas Elektronik and QinetiQ.



### ⑤ Portland Port

The port has 2m sqm (200 hectares) of land of which 400,000 sqm is designated permitted development. Over 300,000 sqm has already been developed, leaving 100,000 sqm for future opportunities.





# Clean Connected Dorset

## Global and local

Our 'clean connected' portfolio sets out our vision for a safe, reliable and accessible low carbon transport system for the City Region and surrounding rural and coastal communities, maximising sustainable transport, enhancing digital connectivity and protecting the area's unique environmental assets.

Our overarching transport investments are outlined in detail within the Dorset-wide Local Transport Plan and Western Gateway Subnational Transport Strategy. While our priority is to invest in sustainable transport options leading to a modal shift in movement to public transport – including a city

rapid transit system, improved rail connections, station improvements, and more walking and cycling – we have also prioritised critical strategic road investment to support economic growth. This forms a key element of our ambition for devolved powers across public transport throughout Dorset to create an integrated approach to sustainable travel. Priority investments are outlined here and include:

- Achieving a 90 minute rail connection from Bournemouth to London.
- Increasing regional connectivity by rail including direct train services from Bournemouth to Exeter / Plymouth /

Bristol via Weymouth – and an aligned improvement across rail electricity supplies.

- Metro-connectivity into and around the City Region.
- Smart ticketing across all public transport – facilitated by a 'Transport for London'-type arrangement.
- Improved strategic road connectivity 'North to South' and within the City Region.

Digital connectivity investments are outlined within our SMART portfolio alongside our net gain/carbon mitigation ambitions within the NATURAL portfolio.

**A30/B3081 NORTH DORSET TOWN IMPROVEMENTS**

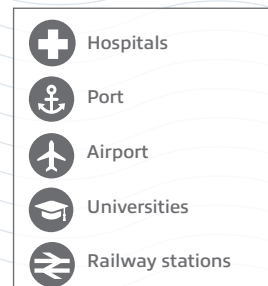
**NORTH SOUTH CONNECTIVITY TO M4 AND M5**



**A354 CORRIDOR, PORTLAND TO WEYMOUTH TO DORCHESTER JUNCTION IMPROVEMENTS**



**CYCLE AND WALKING ROUTES**  
**BUS IMPROVEMENTS**



**ACCESS TO THE PORT OF POOLE**

**CONGESTION / JOURNEY TIME**

**THE BIG PROGRAMME – ACCESS TO BOURNEMOUTH AIRPORT**

**NORTH BOURNEMOUTH QUALITY BUS CORRIDOR**

**A3049 WALLISDOWN ROAD / RINGWOOD CONNECTIVITY**







# Destination Dorset

## A premier cultural destination

Dorset has an exceptional offer and breadth as a world-class destination. This is supported with dedicated excellence in tourism learning and development at Bournemouth University and an internationally renowned creative arts and cultural leader at Arts University Bournemouth. With city, coast and rural locations in one 'place', our high quality offer includes an outstanding environment and things to do all year round. Opportunities include:

- **A connected 'city – coast – rural' destination:** Underpinned by a Smart Destination Hub online (places to stay, where to eat, things to do, ways to get there), a focus on 'green tourism' and an excellence programme for skills and training

- **A world-class portfolio** of high quality cultural, heritage and hospitality/tourism infrastructure (pan-Dorset), including a reimagined cultural quarter in the centre of the new City Region and fully realising

the global importance of our UNESCO World Heritage Status Jurassic Coast. This portfolio includes private-led opportunities as well as those supported by public and voluntary organisations.

- **An exceptionally curated five year programme** of national and international creative and cultural events, festivals and performances, supporting **City of Culture status**.

This is not business as usual. In the face of the pandemic we have a once in a lifetime opportunity to rebuild domestic tourism: perhaps the greatest opportunity for growth and revitalisation since the onset of the 'decline' in traditional seaside holidaymaking in the 1960s. Investment in product, marketing and skills development will set the course for a generation. That's why we're backing plans for a **Great South West Tourism Zone** to provide strategic support to revitalise the sector over the next three to five years as a key intervention in post-COVID-19 recovery.



# Skills for all

## Recovery, regeneration and growth

Working across Dorset but with a particular focus on areas and sectors hardest hit by the economic impacts of COVID-19, we have developed a Dorset Skills Plan which we want to enhance with devolved skills funding to target the following areas:

- **Skills for recovery** – for industries most exposed by COVID-19 such as cultural and tourism businesses.
- **Place-based skills for regeneration** – for communities with lower skills levels in areas of relative deprivation.
- **Future growth, talent attraction and retention** – for our Local Industrial Strategy clusters.

Our comprehensive skills programme features across all aspects of this Prospectus. Our 'LIVING' portfolio will provide immediate responses to the big skills issues currently facing Dorset communities:

- A co-ordinated approach across all skills and training providers to deliver a demand-led rapid retraining/reskilling programme across Dorset.
- Supporting innovative and alternative 'learning spaces', such as rural and virtual 'hubs'.
- Targeting support to 16-24 year olds and our older workforce across Dorset, providing an 'all stages, all ages' careers service with clear pathways to skills acquisition and careers, including upskilling, apprenticeships and expanding the Kickstart initiative.



- Establishing Weymouth & Portland and Bridport task groups in order to understand fully the challenges facing those communities and work towards reducing inequality.
- Supporting the skills priorities within the Boscombe Town Investment Plan.





# INVESTING IN A VISION TO LIVE BETTER AND STIMULATE ECONOMIC RECOVERY IN DORSET

Dorset is an exemplar of sustainable coastal living where new ways of living and working are tackling climate change head-on and where 'a way to age' that's fit for the 21st century forms a key economic and social opportunity.

Dorset Local Industrial Strategy 2020

We hope this investment prospectus has given you a flavour of the opportunities to partner with us in Dorset's exciting future over the next 10 years.

Across our four key themes of Smart, Wellbeing, Natural and Living, we have shown how Dorset is evolving and innovating its £18.5 billion economy to accelerate positive change.

Some of the biggest challenges of our age – from an ageing population to climate change to sustainable food production – come together in Dorset as opportunities to grow knowledge, investment and wellbeing.

We want Dorset to be an exporter of public good, a place where new approaches are tested, proven, and transferred, supporting our economy, environment and communities in the process.

The ravages of the COVID-19 pandemic have acutely highlighted why we need to 'build back better', re-imagining our town centres, investing in new skills, harnessing digital technology, growing new markets, especially closer to home as part of a more circular economy.

And do it in a way that supports all our communities, which have rallied to such great effect despite a year of disruption to our way of life.

That resilience, and the ability to adapt and change, is arguably one of our greatest assets, and augurs well for our recovery.

The signatories on the facing page are just a snapshot of the partners from across the public and private sectors in Dorset who have come together to endorse and deliver this investment prospectus.

It is a shared vision, and we hope one that you will share with us.

## INVEST IN US

Dorset is a collaborative 'superpower'. With simplified structures and a shared clarity of thinking and ambition – doing business with us is easy.



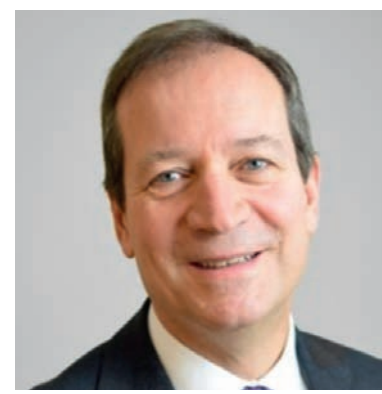
Cecilia Bufton  
Dorset Local Enterprise Partnership Chair



Lorna Carver  
Dorset Local Enterprise Partnership Director



Cllr Drew Mellor  
BCP Council Leader



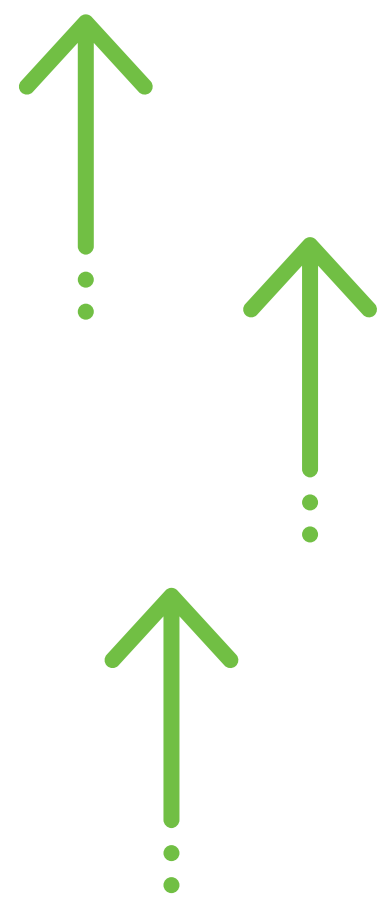
Graham Farrant  
BCP Council CEO



Cllr Spencer Flower  
Dorset Council Leader



Matt Prosser  
Dorset Council CEO





# DORSET

A place of success

38,000+  
BUSINESSES

In the  
**TOP  
10 LEP  
AREAS**

Economy worth  
**£18.5  
BILLION**

per year

Early  
deployment of  
a smart places  
**5G network**  
and platform

for increases  
in higher  
education  
learners  
and firms  
undertaking  
**Research &  
Development**

2nd

largest international  
education sector  
outside London



408,000



**JOBS**

800,000

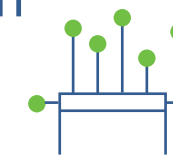
**POPULATION**

## MAJOR UK AND INTERNATIONAL COMPANIES INCLUDING:

- BAE Systems
- Barclays
- Merlin Entertainments
- Jordans and Ryvita
- Siemens
- Draken Europe
- Babcock
- McCarthy and Stone
- JP Morgan Chase
- Sunseeker International
- Vitality Health
- Lush

# UK No.1

area for high growth  
digital businesses



# UK No.2

fastest growing area for start ups



## 2 COMMERCIAL PORTS

including Europe's largest natural  
harbour and the UK's largest  
increase in port freight tonnage  
over the last 5 years



Part of the  
UK's largest  
regional  
**CYBER  
SECURITY  
CLUSTER**

## HOME OF:

- National Centre for Computer Animation
- DEFRA's Centre for Environment, Fisheries and Aquaculture Science (Cefas)
- Bournemouth Symphony Orchestra – the cultural heartbeat of the South West
- AFC Bournemouth – the Cherries!
- National Centre for Post-Qualifying Social Work and Professional Practice
- Royal National Lifeboat Institution HQ, including the RNLI College
- Specialist institutes in clinical and applied science, bio-mechanics (musculoskeletal), digitisation of health responses and dementia

One of the  
most advanced  
**Integrated  
Care Systems**  
in the UK



A burgeoning  
advanced  
engineering and  
manufacturing  
cluster  
contributing  
**£1.4bn**  
to the local  
economy





Please message us [here](#) if you would like to find out more about any element of the Prospectus.