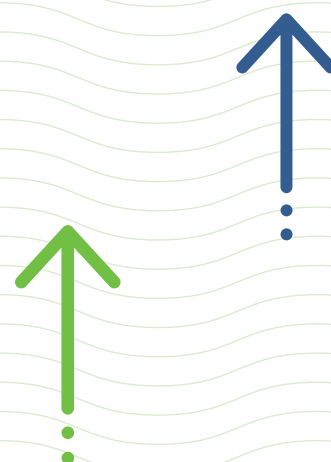
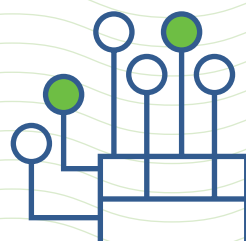
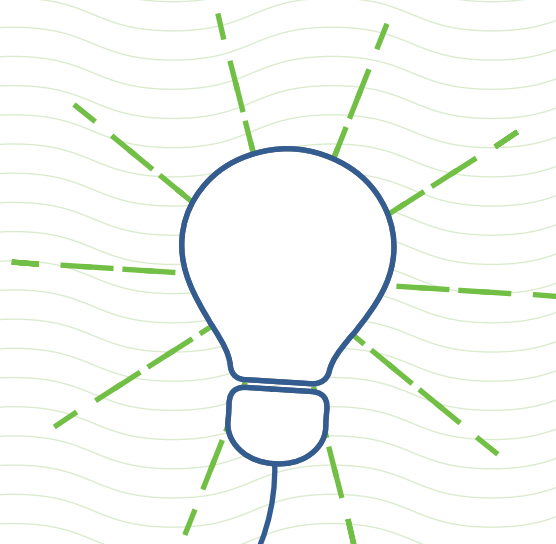
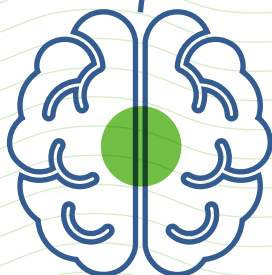




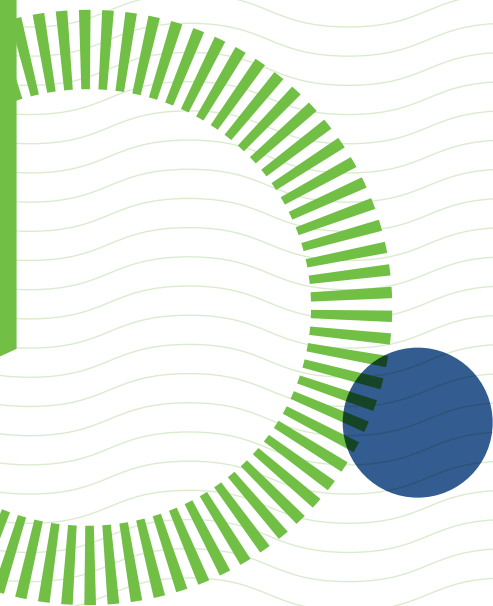
# SMART

Leading a smart revolution across Dorset by accelerating gigabit and wireless connectivity, including 5G. This is a significant opportunity at the heart of our prospectus, increasing the accessibility and application of digital technology to benefit our economy, people and places.





# SMART



## Creating the UK's first SMART open ecosystem

The SMART investment portfolio is at the heart of the Dorset Prospectus. It focuses on how technology and data solutions can drive connectivity, sustainable regeneration and economic development across Dorset, improving the lives of local residents and generating value for people, business and places.

Dorset is serious about investing in technology and digital skills as a means to driving productive, clean growth. We already have the building blocks in place of a 'smart' ecosystem that spans city and rural areas.

Bournemouth, Christchurch and Poole Council has an established and growing Smart Place programme with more than 60 engaged partners across our City Region and a growing 5G network. In rural and coastal areas, Dorset Council is spearheading the 5G RuralDorset project looking at how

next generation connectivity can address local challenges and improve lives.

Across our industry clusters, identified in the Dorset Local Industrial Strategy, our businesses and institutions are taking the lead nationally and internationally in the competitive application of smart technologies, and in research and development.

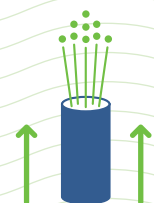
Our investment priority is to complete the rollout of superfast broadband coverage with enhanced ultrafast in economic hotspots, and delivery of our 100% full-fibre Gigabit Strategy.

Opportunities exist in both increasing the accessibility and application of smart technology, helping us realise the potential of co-operative delivery and innovative business models, with an eye on post-pandemic recovery and new working practices.

## TRENDS AND TRAJECTORY



BCP Smart Place  
Place Programme  
will unlock  
**£1bn** investment  
in the next 10 years



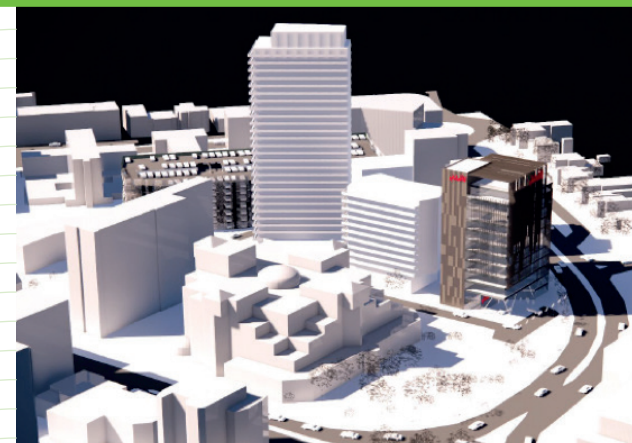
**8%**  
of premises have  
full fibre connection  
(higher than  
England average)



**97%**  
of Dorset has  
broadband  
coverage



Employment in  
creative and digital  
companies is growing  
**10% faster**  
than the UK



## Highlighting our SMART investment opportunities

- OUR SMART AND SUSTAINABLE CITY REGION  
At the forefront of digital transformation
- SMART RURAL AND COASTAL COMMUNITIES  
Unlocking the power of digital for 'future Dorset'
- SMART CLUSTERS  
Driving new industrial opportunities
- SMART INFRASTRUCTURE  
Providing the platform for change
- SMART SKILLS  
Digital life and technological futures

## Immediate asks

- Support from the British Business Bank to create a Dorset 'Smart Challenge Fund'
- Creating a new home for the Digital Catapult's 'Future Networks Lab Accelerator'
- Integrating Battle Lab within the UK's Defence and Security Accelerator (DASA)
- Establishing a Digital Skills Partnership for Dorset





# Smart and Sustainable City Region

## At the forefront of digital transformation

BCP Council's Smart Place programme is working with industry to create digital solutions to improve the lives of residents, the vibrancy of local communities and the prospects of local businesses.

It represents a major opportunity for digital technology companies to establish a presence in our City Region and be at the forefront of digital development.

Smart Places use data and technologies to meet local challenges such as health care, sustainable transport, industrial productivity and supporting local supply chains, in an integrated way.

The Smart Place Programme and its ambitions are strongly supported by a number of UK government

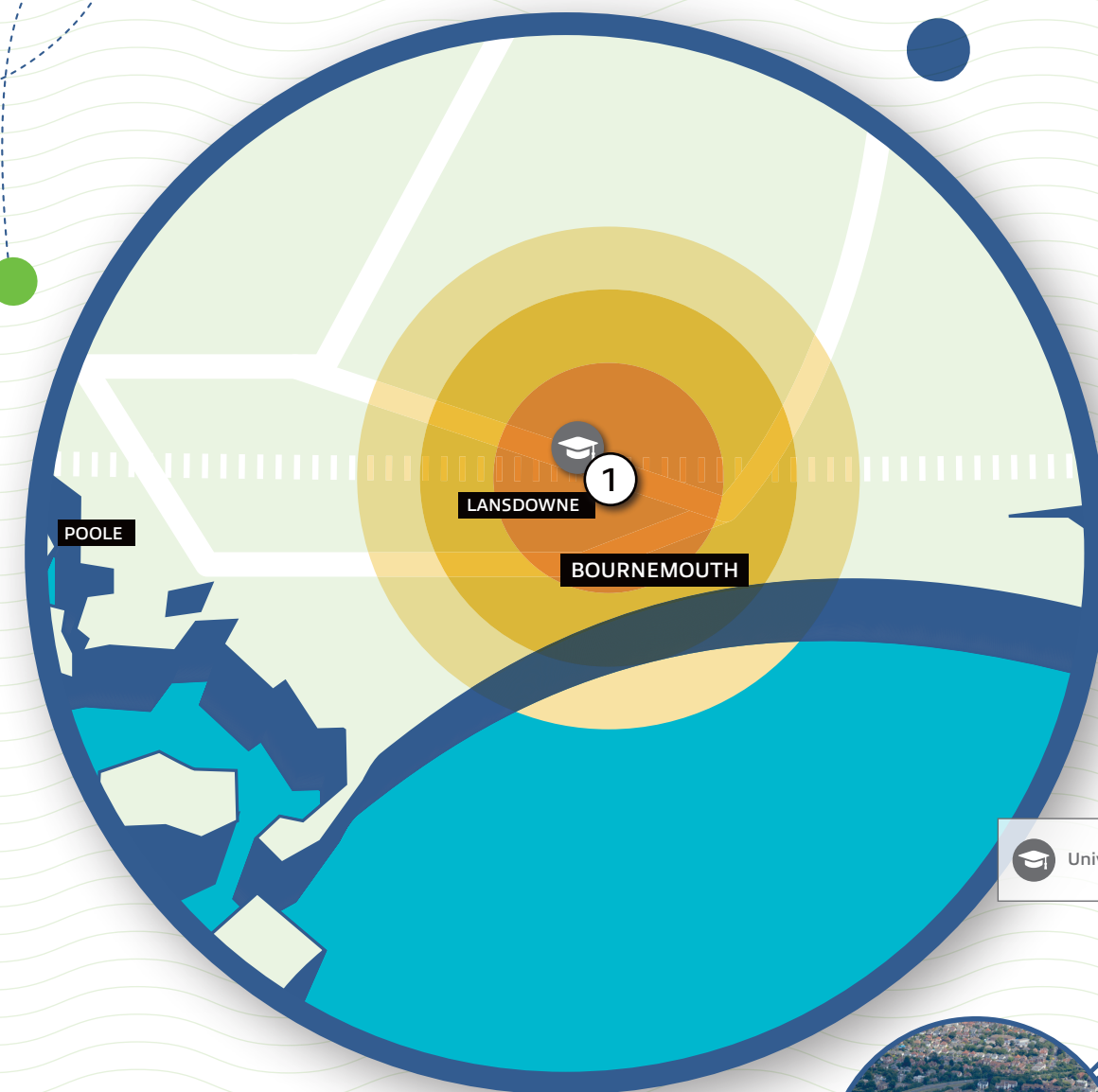
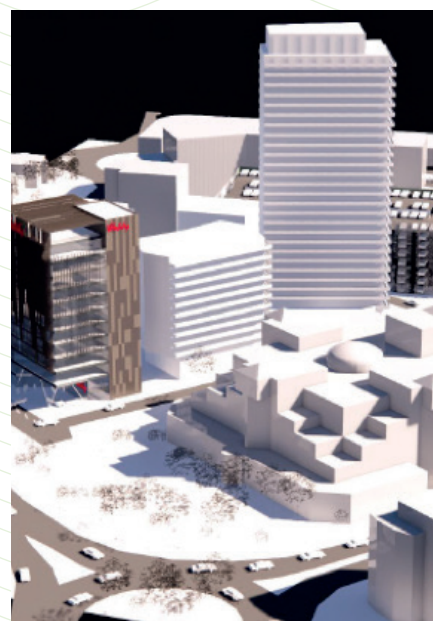
departments including the Department of Digital, Culture, Media and Sport; the Ministry of Housing, Communities and Local Government; the National Cyber Security Centre and the Department for International Trade.

The Council has already developed a significant Smart Place R&D Consortium with over 60 industry partners, underpinned by an industry-leading 5G network. It aims to create a **Smart Place Digital Innovation Hub** with the potential to include the Digital Catapult's **Future Network Labs Accelerator** to support the rapid growth of digital technology start-ups.

The hub will connect charities, public sector services, education and other organisations across an open,

co-creative community of technology companies who can develop and implement innovative solutions for mutual benefit.

Overall, **BCP Council's Smart Place programme** represents a major opportunity for creative and digital companies to trial new technologies to support the area's social and economic priorities. A Smart Place pilot is already taking place around the Lansdowne area of Bournemouth, with companies beginning to develop proof of concept, meaningful solutions to address local challenges.



## INVESTMENT HIGHLIGHTS

### ① Lansdowne Central Business District

With a primary focus on support for new tenants, Lansdowne in Bournemouth is developing into a major commercial business district and is our key 'landing point' for smart-tech business in the City Region.

To enable Smart Place trials to take place, we are investing in underpinning digital infrastructure, namely 5G, ducting and fibre, public Wi-Fi and Internet of Things (IoT) networks. This pilot project is exploring how emerging 5G technologies can enhance

Smart Place outcomes. 5G enables faster download and upload speeds and greater capacity of the network, allowing more people to access more data on more devices at the same time.

Although the radio technology underlying 5G is well proven, the deployment of 5G networks is still relatively new. This high-tech pilot not only increases Wi-Fi connectivity speed but is enabling the area's advanced manufacturing, health and social care sectors to test and trial 5G-enabled

equipment within the business district. We are excited to offer the location to more businesses looking to establish in the City Region.

The programme will soon be extending into the Bournemouth suburb of Boscombe, with further expansion planned in the next few years across the whole of the City Region – including our MedTech Science Park.





# Smart Rural and Coastal

## Unlocking the power of digital for future Dorset

Alongside the Smart Place programme in our City Region, rural and coastal areas are working to unlock the power of digital to drive Dorset's future growth and resilience. This includes its ability to recover from the pandemic, regenerate economically and improve opportunities for all businesses and residents via a full fibre spine network and wireless connectivity.

5G RuralDorset is a ground-breaking initiative working to understand how

next generation connectivity can help people live better, safer and more prosperous lives in rural communities, even in environments as sensitive as Dorset's UNESCO-designated world heritage coastline.

There are four active trials (see below) currently operating in the Dorset Council area, looking at innovative public, social and business uses of improved mobile coverage. They are testing whether this connectivity can

be delivered cheaper and faster using existing masts, buildings and fibre wherever possible, to minimise visual and other impacts.

The research and development project will contribute to the understanding of how 5G can be used to address some specific challenges – public safety, economic growth, food production and environmental – and create new opportunities in rural communities in Dorset and across the UK.



## INVESTMENT HIGHLIGHTS



### ① The Future of Food

We're developing new wireless technology on existing masts and fibre owned and operated by internet service provider Wessex Internet to allow innovative agricultural uses. These may include 'smart' farm controls, crop and livestock monitoring, the use of robotics and using drones to spray more precisely and minimise chemical run-off into local water courses.



### ② Rural industries and services with Vodafone

New mobile services are currently being trialled to unlock social and commercial benefits. These will include Vodafone bringing enhanced mobile phone coverage to the area for locals and the one million visitors who visit each year. Additional possible uses, from tourism and education to healthcare, will be considered.



### ③ Connected coast

We are improving safety along a section of the coast by upgrading access to digital communications for first responders and supporting organisations including the RNLI and Maritime and Coastguard Agency. We are also monitoring landslide activity using 5G-enabled IoT and other technologies.



### ④ Innovation Accelerator @ Dorset Innovation Park

Advanced 5G indoor and outdoor mobile connectivity is being provided to help businesses test and develop products in a collaborative and secure way. This Enterprise Zone and advanced-engineering centre already supports large and small companies that develop innovative connected products and services.





# Smart Clusters

## Driving new industrial opportunities

Dorset is home to collaborative clusters of deep expertise and specialisation, as identified in the area's Local Industrial Strategy.

We are working to connect these industrial clusters with our smart places investment – maximising the economic opportunities of the application of technology, and strengthening collaboration among and between those clusters.

In support of this, we will be taking forward a Dorset Smart Challenge Fund to help businesses access the finance they need to make the most of new technologies, and to drive innovation and growth.

As well as improving access to the very latest smart technology, our research and higher/further education strengths (outlined in our smart skills programme) support a strong labour market and further potential.

Our strengths and opportunities include:

- **One health** with strengths in integrated health research and implementation across the One Health agenda: humans, animals and the wider environment.
- **Defence and security** – with a growing focus on defence and security information systems and cyber security, this is an industry-led cluster with strong engagement from the MoD – including their Battle Lab R&D facility at the Dorset Innovation Park, which includes indoor 5G facilities provided by 5G RuralDorset.
- **Natural Capital** – including our specialisms in agritech, aquaculture and environmental technologies, with an increasing focus on the use of smart technology (outlined in our NATURAL portfolio), including tackling climate change.

- **Creative, tourism and cultural** sectors – underpinned by a number of centres of excellence across the area, including Arts University Bournemouth and Bournemouth University, and an emerging cultural programme described in our LIVING portfolio. The 'createch' sector, combining creative industries and new technology, is an area of exciting opportunity.
- **Finance and professional** services – particularly those using smart technology to reach new markets and 'disrupting' existing ones, including the growth in our fintech cluster.
- All underpinned by our **engineering and manufacturing** base, stretching across all areas of Dorset and increasingly smart enabled, such as the growth in 3D printing and machine learning.



## SMART APPLICATION CLUSTERS



One Health  
(inc. MedTech)



Defence & Security



Environment and  
Agritech / Aquaculture



Creative and Cultural



Financial and  
Professional Services



Engineering and  
Manufacturing base







# SMART Infrastructure

## Providing the platform for change

Dorset is accelerating how people interact digitally to ensure the region is well connected and a great place to live, visit and do business.

Our investment priority is to complete the rollout of superfast coverage across Dorset, with enhanced ultrafast in economic hot spots. We're pressing for comprehensive 5G coverage to ensure all communities benefit, regardless of location, using complementary technologies where required to ensure speeds are increased.

Our Smart portfolio highlights critical investments in digital infrastructure, with a series of investment opportunities across fibre and 5G, as well as linked opportunities in data centre development, data platforms (including private networks) and aligned services and applications linked to our industry clusters.

Although we have made excellent progress in coverage, more upfront investment is required.

Our City Region smart infrastructure priorities include gigabit fibre connectivity, ubiquitous public Wi-Fi, innovative 5G networks and an open architecture platform that hosts 'place data'.

Across the wider Dorset geography, we are prioritising early public investment in localised hubs, to extend our high capacity spine and improve market and commercial conditions for on-going investment. This will deliver 100% gigabit coverage, in partnership with commercial companies (including Vodafone) and Government. We will also be working with established mobile network operators to accelerate roll-out of 4G and 5G, delivering a mix of next-generation Wi-Fi and cellular coverage to excluded communities.

Dorset's 'Gigabit Strategy' is currently being finalised to create a jointly-owned Dorset/Government programme to March 2026. It will build on the existing 5G RuralDorset pilot project.



We are also particularly interested in linked opportunities such as smart grid investment and ensuring all new build developments integrate smart connectivity. Micro-power (renewable) generation is one concept we are considering for our future energy resilience, while meeting our net zero carbon targets.

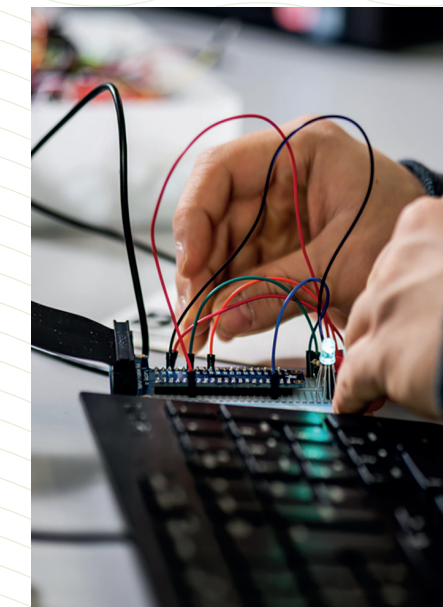
# SMART Skills

## Digital life and technological futures



An essential element of our Smart portfolio is our comprehensive skills, learning and training programme, much of which is in place, with elements already having national and international recognition. We have an excellent working partnership across our schools, colleges, universities and business. Our ambition is to further develop the depth of our smart skills, with an emphasis on *digital life, creative tech and technological futures*. Key to this will be establishing a Government-backed Digital Skills Partnership for Dorset and our programme will include:

- **Digital skills for life**  
A comprehensive range of digital skills programmes from digital access and addressing the digital divide through to digital leaders and maximising digital opportunities for all business.
- **Smart engineering**  
Including 'fibre training' to ensure an indigenous local workforce to support the installation and operations of our comprehensive digital infrastructure; advanced engineering skills to support the integration of digital



tech and embedded software across the engineering and manufacturing spectrum (including smart grid technology, aerospace/defence, agritech, marine and construction).

- **Creative and Digital specialisation**  
Specialist skills support in those sectors unlocking the wider potential of smart tech, including defence (information systems and cyber security); health and medtech; creative and cultural industries; computer animation and visualisation.
- **Creative tech**  
Maximising the human element of the industrial revolution 4.0, bringing together arts, creativity, science, design and enterprise skills to ensure human centred design and user experiences are built into our smart approach.



## CURRENT

We are building on investments made since 2015 of at least:

Living	£88m
Natural	£11m
Smart	£48m
Wellbeing	£39m

**£186m**

## FUTURE

The Dorset Investment Prospectus headlines the following investment opportunities over the next 10 years:

Living	£2.2bn
Natural	£285m
Smart	£350m
Wellbeing	£140m

**£2.975bn**

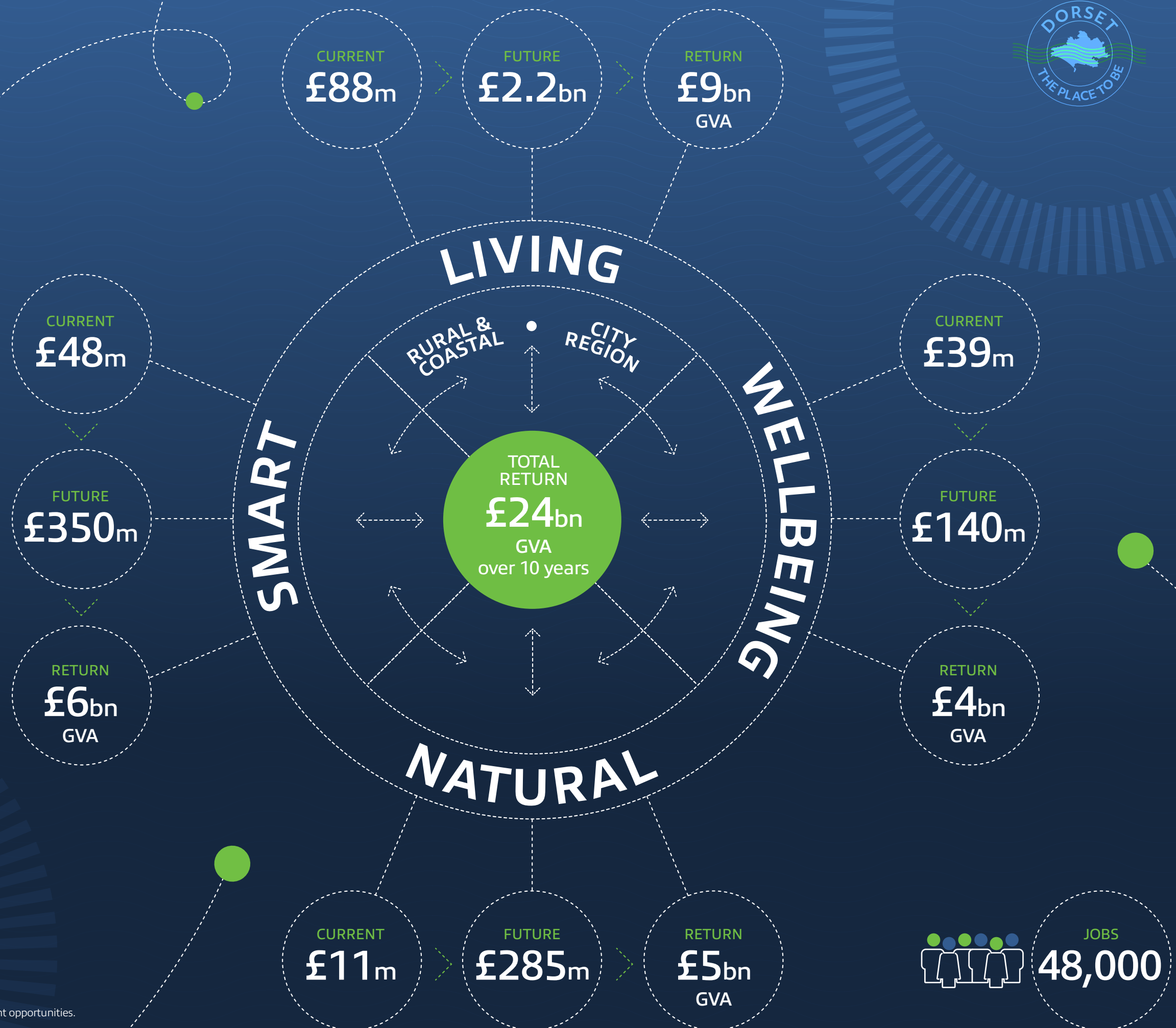
## RETURN

These deliver an estimated 10 year economic return to Dorset of:

Living	£9bn GVA
Natural	£5bn GVA
Smart	£6bn GVA
Wellbeing	£4bn GVA
New Jobs	48,000

**£24bn GVA**

Current investment figures based on Dorset LEP programmes.  
Other figures are based on an initial market test of future investment opportunities.  
We have made evidenced assumptions where required.







Please message us [here](#) if you would like to find out more about any element of the Prospectus.

Special thanks to 3 Sided Cube, Bournemouth University, The Arts Development Company, AUB Marketing, Dorset Coast Forum and Butterfly Effect Films, RNLI / (Harrison Bates, Gavin Jones, Dave Morgan, Nathan Williams), Dorset Farmers' Market, Sam Dallimore, Dorset Wildlife Trust, Maria Clarke, Dorset LNP and Dorset LEP for allowing us to use their photography.